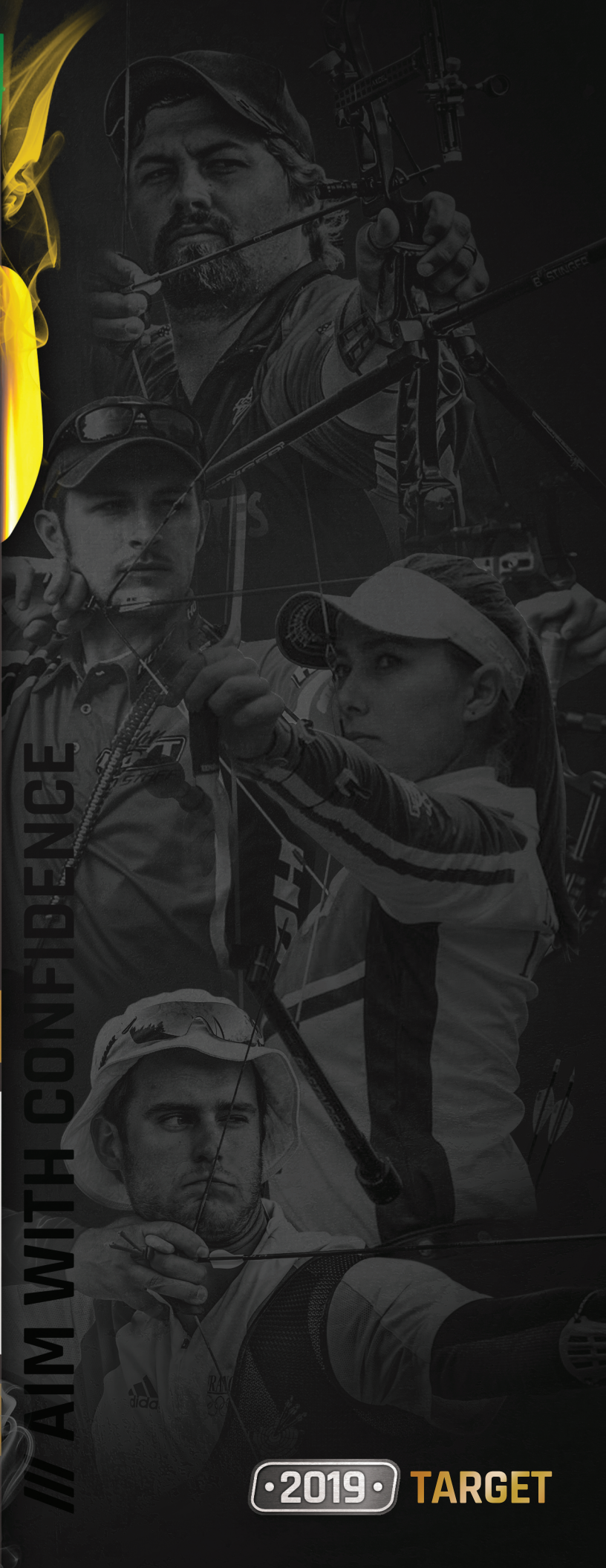


EASTON®



X10 EASTON X10

/// AIM WITH CONFIDENCE



•2019• TARGET

X10®

THE ULTIMATE
RECURVE ARCHERY PROJECTILE

- /// High-strength carbon fiber bonded to a 7075 alloy core
- /// Polished black carbon finish
- /// Straightness: $\pm .0015''$
- /// Weight tolerance: ± 0.5 grains
- /// Components—sold separately
- /// Barreled design
- /// Used to win every Olympic title since 1996
- /// MADE IN USA

COMPONENTS



X10 Ballistic Tungsten Break-off - 120
(100/110/120 gr.)



X10 Stainless Steel Break-off (12L-14 Stainless)
(100/110/120 & 80/90/100 gr.)



X10 Pin™ (8 gr.)
Pin™ Nock (2 gr.)
G Pin™ Nock (4 gr.)
Over Nock (6 gr.)

X10® PROTOUR™
PROTOUR™
X10®

- /// Lightweight, high-modulus carbon fiber bonded to a precision 7075 alloy core
- /// Polished black carbon finish
- /// Straightness $\pm .0015''$
- /// Weight tolerance: ± 0.5 grains
- /// Components—sold separately
- /// Tapered design
- /// MADE IN USA

COMPONENTS



X10 Ballistic Tungsten Break-off - 120
(100/110/120 gr.)



X10 Ballistic Tungsten Break-off - 140
(100/110/120/130/140 gr.)



X10 Stainless Steel Break-off (12L-14 Stainless)
(100/110/120 & 80/90/100 gr.)



ProTour Pin™ (340 - 620) (8 gr.)
X10 Pin™ (8 gr.)
Pin™ Nock (2 gr.)
G Pin™ Nock (4 gr.)

Size	Shaft Weight ¹	Spine @ 28" Span	Shaft O.D. ²	Stock Length	Max. Trim ³	Recommended Point Weight Range
	GPI	Deflection	Inches	Inches	Inches	Grains
1000	5.3	1.000	.176	28	No limit	90-110
900	5.8	0.900	.186	28	No limit	90-110
830	6.2	0.830	.200	28.5	No limit	90-110
750	6.4	0.750	.190	29	3.5	100-110
700	6.7	0.700	.190	29	3.5	100-110
650	6.8	0.650	.195	29	3.5	100-110
600	7.0	0.600	.198	30	4.5	100-110
550	7.5	0.550	.200	31	3.5	100-120
500	7.8	0.500	.205	32	4.0	100-120
450	8.1	0.450	.207	33.5	5.5	100-120
410	8.5	0.410	.211	33.75	5.5	100-120
380	8.9	0.380	.213	33.75	6.5	100-120
350	8.8	0.350	.218	34	6.0	100-120
325	9.2	0.325	.221	34.25	6.0	100-120

1 Due to the barrel design of the X10, the weight is an average grains-per-inch of a 29" shaft. Shaft weight is slightly heavier in the larger diameter center and lighter toward the tapered ends. One inch of shaft cut from the point end typically weighs 6-7 grains.

2 Nominal O.D. at mid-point of shaft. Ends are smaller.

3 Recommended that no more than these lengths be cut from the front of the shaft.

WORLD'S MOST ACCURATE
COMPOUND ARROW

Size	Shaft Weight ¹	Spine @ 28" Span	Shaft O.D. ²	Stock Length	Max. Trim ³	Recommended Point Weight Range
	GPI	Deflection	Inches	Inches	Inches	Grains
770	6.0	0.770	.181	29	No limit	90-110
720	6.2	0.720	.183	29.75	No limit	90-110
670	6.5	0.670	.186	29.75	4.0	100-110
620	6.7	0.620	.188	30	4.5	100-110
570	6.9	0.570	.191	31	5.0	100-120
520	7.3	0.520	.194	32	5.5	100-120
470	7.6	0.470	.198	33.25	6.0	100-120
420	8.0	0.420	.202	33.75	6.5	100-120
380	8.4	0.380	.207	34	7.0	100-130
340	8.8	0.340	.213	34	7.0	100-140

1 Due to the taper design of the X10 Pro Tour, the grain weight-per-inch shown is an average weight-per-inch of a 29" shaft. Shaft weight is slightly heavier toward the larger-diameter nock end and lighter toward the tapered front end. One inch of shaft cut from the point end typically weighs 6-7 grains.

2 Nominal O.D. at mid-point of shaft. Front end is smaller.

3 Recommended that no more than these lengths be cut from the front of the shaft.

ALUMINUM
CARBON

ALUMINUM
CARBON

EASTON A/C/E

A/C/E®

HIGH-PERFORMANCE RECURVE ARROW

FOR TARGET AND FIELD



ALUMINUM
CARBON

- /// High-strength carbon fiber bonded to a 7075 alloy core
- /// Polished black carbon finish
- /// Straightness: $\pm .0015''$
- /// Weight tolerance: ± 0.5 grains

- /// Components—sold separately
- /// Barreled design
- /// MADE IN USA

A/C/E® Insert and Point System 5-44 Thread					
A/C/E Insert	Screw-in Point				
Point Weight	#2-31gr.	#3-36gr.	#4-41gr.	#5-46gr.	#6-51gr.
A/C/E Insert Weight	Total Weight (grains)—Insert and Point				
H - 39gr.	70	75	80	85	90
J - 49gr.	80	85	90	95	100
L - 59gr.	90	95	100	105	110

COMPONENTS



A/C/E Stainless Steel Break-off Point:
(60/70/80—80/90/100—100/110/120 gr.)



One-piece Point
(50 gr.)



Screw-in Point
(31, 36, 41, 46, 51 gr.)



A/C/E Insert
(39, 49, 59 gr.)



A/C/E Pin™ 4MM
(8.7 gr.)



Pin™ Nock
(2 gr.)



G Pin™ Nock
(4 gr.)



G Nock™ 4MM
(7 gr.)



Deep Six™ 4MM Nock
(fits sizes 370-470) (6 gr.)

Size	Shaft Weight ¹	Spine @ 28" Span	Shaft O.D. ³	Stock Length	Maximum Trim ⁴	Recommended Point Weight Range
	GPI	Deflection	Inches	Inches	Inches	Grains
1250 ²	5.1	1.250	.205	26.625	No limit	60-70
1100 ²	5.1	1.100	.205	28.625	No limit	70-80
1000	5.7	1.000	.213	28.625	No limit	70-80
920	5.8	0.920	.213	28.625	9.5	70-80
850	5.7	0.850	.213	28.625	No limit	70-80
780	6.0	0.780	.216	29.625	No limit	80-90
720	6.4	0.720	.215	29.625	6.0	80-90
670	5.9	0.670	.212	30.625	No limit	80-90
620	6.1	0.620	.214	30.625	No limit	90-100
570	6.3	0.570	.216	31.625	10.0	90-100
520	6.7	0.520	.216	31.625	4.5	90-100
470	6.8	0.470	.223	32.625	6.5	90-110
430	7.0	0.430	.224	32.625	5.5	100-120
400	7.5	0.400	.230	32.625	4.0	100-120
370	7.9	0.370	.230	32.625	4.0	110-120

1 Due to the barrel design of the A/C/E, the weight is an average grains-per-inch of a 29" shaft. Shaft weight is slightly heavier in the larger diameter center and lighter toward the tapered ends. One inch of shaft cut from the point end typically weighs 5-6 grains

2 Available as a special order only. Replaced with A/C/C -00 sizes.

3 Nominal O.D. at mid-point of shaft. Ends are smaller.

4 Recommended that no more than these lengths be cut from the front of the shaft.

LIGHT-WEIGHT PARALLEL COMPOUND A/C



ALUMINUM
CARBON

NEW FOR 2019

PROCOMP™

- /// High-strength carbon fiber bonded to a 7075 alloy core
- /// Polished black carbon finish
- /// Straightness: $\pm .0015''$
- /// Weight tolerance: ± 0.5 grains

- /// Components—sold separately
- /// Parallel design
- /// MADE IN USA

COMPONENTS



Carbon One Stainless Steel Break-Off
(70/80/90—90/100/110 gr.—100/110/120 gr.)



A/C/E Stainless Steel Break-off Point:
(60/70/80—80/90/100—100/110/120 gr.)



Screw-in Point
(31, 36, 41, 46, 51 gr.)



A/C/E Insert
(39, 49, 59 gr.)



A/C/E Pin™ 4MM
(8.7 gr.)



Carbon One-#2 Pin
(500-410) (9 gr.)



Pin™ Nock
(2 gr.)



G Pin™ Nock
(4 gr.)



G Nock™ 4MM
(7 gr.)



Deep Six™ 4MM Nock
(6 gr.)

Size	Shaft Weight	Spine @ 28" Span	Shaft O.D.	Stock Length
	GPI	Deflection	Inches	Inches
570	6.6	.570	.215	31.63
520	7.0	.520	.217	31.63
470	7.3	.470	.220	32.63
420	7.8	.420	.224	32.63
380	8.3	.380	.227	32.63
340	8.9	.340	.231	33.63
300	9.5	.300	.236	33.63

A/C/G™

INCREDIBLE PRECISION
FOR INDOOR & OUTDOOR ARCHERY

USA

ALUMINUM
CARBON

- /// Lightweight carbon fiber bonded to a precision 7075 alloy core
- /// Straightness $\pm .002"$
- /// Weight tolerance: ± 1.0 grains
- /// Components—sold separately
- /// Parallel design
- /// MADE IN USA

COMPONENTS



A/C/E Stainless Steel Break-off Point:
(60/70/80—80/90/100—100/110/120 gr.)



One-piece Point
(50 gr.)



Screw-in Point
(31, 36, 41, 46, 51 gr.)



A/C/E Insert
(39, 49, 59 gr.)



A/C/E Pin™ 4MM
(8.6 gr.)



Pin™ Nock
(2 gr.)



G Pin™ Nock
(4 gr.)



G Nock™ 4MM
(7 gr.)



Deep Six™ 4MM Nock
(fits sizes 430-610) (6 gr.)

Size	Shaft Weight	Spine @ 28" Span	Shaft O.D.	Stock Length	Recommended Point Weight Range
	GPI	Deflection	Inches	Inches	Grains
1500	4.7	1.500	.201	28	50-70
1300	5.1	1.300	.204	28.5	50-70
1150	5.5	1.150	.208	28.5	50-70
1000	5.5	1.000	.204	29	70-80
880	5.9	0.880	.207	29.5	70-80
810	6.1	0.810	.209	30	80-90
710	6.5	0.710	.213	30.5	80-90
660	6.9	0.660	.215	30.75	80-90
610	7.3	0.610	.218	31	80-90
540 ¹	7.7	0.540	.221	31.5	100
480 ¹	8.4	0.480	.226	32	100-110
430 ¹	8.9	0.430	.229	32.5	100-110

¹ 430, 480, 540 sizes use unique A/C/G point and nock pin. All others use A/C/E points and nock pins.

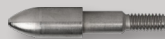
A/C/C™

- /// High-strength carbon fiber bonded to a precision 7075 alloy core tube
- /// Polished carbon finish
- /// Straightness: $\pm .002"$
- /// Weight tolerance: ± 0.5 grains
- /// Components—sold separately
- /// Nock bushing installed (except -00 sizes)
- /// Parallel design
- /// MADE IN USA

COMPONENTS



A/C/C NIBB Point



RPS Threaded Point



A/C/C One-piece Parabolic Point



8-32 Half-out Threaded Insert



UNI Bushing*



RPS Threaded Insert



G Nock™ 4MM
(7 gr.)



Deep Six™ 4MM Nock
(6 gr.)

A PROVEN FAVORITE AMONG
RECURVE & COMPOUND SHOOTERS

ALUMINUM
CARBON

Size	Shaft Weight	Spine @ 28"	Shaft O.D.	Stock Length	Point/Insert	Uni Bushing	One-Piece Parabolic Points*					NIBB	RPS Inserts ⁴		RPS Point ⁵
	GPI	Deflection	Inches	Inches		Grain						Point	Halfout	Alum.	O.D. In.
2-00	4.7	1.500	.200	28	ACE*	—	—	50	—	—	—	—	—	—	—
3L-00	5.1	1.300	.204	28.5	ACE*	—	—	50	—	—	—	—	—	—	—
3-00	5.5	1.150	.208	28.5	ACE*	—	—	—	50	—	—	—	—	—	—
2L-04	6.1	1.020	.223	29	-04	2	100	80	70	60	50	—	—	—	—
2-04	6.5	0.920	.228	29.5	-04	2	100	80	70	60	50	—	—	—	—
3X-04	6.7	0.830	.228	29.5	-04	2	100	80	70	60	50	—	—	—	—
3L-04	7.0	0.750	.231	30	-04	2	100	80	70	60	50	—	—	—	—
3-04	7.2	0.680	.231	30	-04	2	100	80	70	60	50	—	—	—	—
3L-18	7.5	0.620	.242	31	-18	3	—	100	82	70	60	70	16	—	17/64
3-18	7.8	0.560	.245	31	-18	3	—	100	82	70	60	70	16	—	17/64
3-28	8.1	0.500	.257	31.5	-28	4	—	100	87	70	60	70	18	—	17/64
3-39	8.6	0.440	.265	31.5	-39	5	—	100	85	70	60	70	22	—	9/32
3-49	8.8	0.390	.276	32	-49	6	—	—	100	80	70	80	—	9	9/32
3-60	9.5	0.340	.289	32.5	-60	7	—	—	108	90	80	90	—	11	5/16
3-71	9.9	0.300	.301	33	-71	8	—	—	114	90	80	90	—	14	5/16

¹ UNI—Universal Nock Installation System.

² G Nock available in black, white, green, blue, deep red, orange, red, and comes in .088" and .098" string groove sizes.

³ NIBB Point grain weights are ± 0.5 grains; all other components are ± 1 grain.

⁴ RPS=Replaceable Point System.

⁵ RPS target points available in 50-125 grains. — Indicates not available.

* A/C/C-00 sizes use the same size core tube as A/C/E shafts and may use all A/C/E points, inserts, and nocks.

HIGH VELOCITY IDEAL FOR 3D

CARBON **HYPERSPEED**™

PRO ±.001

EASTON

NEW FOR 2019—HYPERSPEED & HYPERSPEED PRO

HYPERSPEED™
PRO
±.001

- /// Straightness: ± .003" / PRO ± .001"
- /// Weight tolerance: ± 2 grains
- /// PRO sold only through storefront full-service, authorized Easton retailers
- /// Parallel design
- /// MADE IN USA

COMPONENTS



One-piece Point



RPS Point



CB Point (80 and 100 gr.)



CB Insert



CB-UNI Bushing®
(sizes 1914 and smaller) (12 gr.)



MicroLite™ Super Nock®
6.5 MM (8 gr.)



3D Super Nock®
6.5 MM (13 gr.)



Deep Six™ 4MM Nock
(6 gr.)



G Nock™ 4MM
(7 gr.)

Size	Shaft Weight	Spine @ 28" Span	Shaft O.D.	Stock Length
	GPI	Deflection	Inches	Inches
500	6.9	.500	.287	30.75
400	7.4	.400	.291	31.25
340	8.1	.340	.295	31.75
300	8.8	.300	.298	32.25

CARBON

ALL-CARBON SETS THE MARK FOR
HIGH-LEVEL OUTDOOR COMPETITION

CARBON 1 ONE™

- /// High-strength carbon fibers
- /// Micro-smooth finish
- /// Straightness: ± .003"
- /// Weight tolerance: ± 1 grain

- /// Components—sold separately
- /// Also uses A/C/E components
- /// Parallel design

COMPONENTS



Carbon One Stainless Steel Break-Off
(70/80/90—90/100/110 gr.—100/110/120 gr.)



Steel Point
(70 gr. for 1400-2000 sizes)



Carbon One-#1 Pin
(550-730) (9 gr.)



Carbon One-#2 Pin
(500-410) (9 gr.)



A/C/E Pin™
(810-1150) (8.7 gr.)



Pin™ Nock
(2 gr.)



G Pin™ Nock
(4 gr.)



G Nock™ 4MM
(7 gr.)



Deep Six™ 4MM Nock
(6 gr.)

Size	Shaft Weight	Spine @ 28" Span	Shaft O.D.	Min. Stock Length	Point	Nock Pin Adapter	Nock System
	GPI	Deflection	Inches	Inches			
2000	3.4	2.00	.198	28.25	70 Gr. One Piece	A/C/E	A/C/E/Pin
1800	3.6	1.80	.200	28.5	70 Gr. One Piece	A/C/E	or G Nock
1600	3.8	1.60	.202	28.75	70 Gr. One Piece	A/C/E	or D6 Nock
1400	4.2	1.40	.205	29	70 Gr. One Piece	A/C/E	
1150	5.0	1.150	.208	28.12	Carbon One	A/C/E	Carbon 1 #2 Pin or G Nock
1000	5.0	1.000	.208	28.375	90/80/70	A/C/E	G Nock
900	5.3	.900	.211	28.75	80/90	A/C/E	or Deep Six Nock
810	5.8	.810	.214	29.125	80/90	A/C/E	
730	6.0	.730	.216	29.75			
660	6.6	.660	.220	30.375	Carbon One		Carbon One #2 Pin
600	6.9	.600	.222	30.75	110/100/90	Carbon One-1	or G Nock
550	6.9	.550	.223	31.094			or Deep Six Nock
500	7.4	.500	.226	31.5			
450	8.1	.450	.231	31.875	Carbon One		Carbon One #2 Pin
410	8.5	.410	.234	32.094	120/110/100	Carbon One-2	or G Nock
							or Deep Six Nock

CARBON

Size	Points	
	Carbon One	Steel
2000	•	•
1800	•	•
1600	•	•
1400	•	•
1150	•	
1000	•	
900	•	
810	•	
730	•	
660	•	
600	•	
550	•	
500	•	
450	•	
410	•	

APOLLO™

CARBON APOLLO 1070 5.9 GPI

A PERFECT STARTER ARROW
WITH TIGHT TOLERANCES

CARBON

- /// Micro-smooth finish
- /// Straightness: ± .005"
- /// Weight tolerance: ± 2.0 grain
- /// Components—sold separately

- /// Parallel design
- /// All sizes use Pin Nock, G-Pin Nock, and G Nock
- /// Points included on factory-fletched shafts

COMPONENTS



Apollo One-piece Point
(50/75/100 gr.)



Steel Point
(70 gr. for 1400-2000 sizes)



A/C/E Stainless Steel Break-off Point
(60/70/80—80/90/100—100/110/120 gr.)
Fits spine sizes 560-840



Carbon One Stainless Steel Break-off
(70/80/90 gr. • 950-1200 spines)
(90/100/110 gr. • 670-840 spines)
(100/110/120 gr. • 560 and 610 spines)



Screw-in Point
(31, 36, 41, 46, 51 gr.)



A/C/E Insert
(39, 49, 59 gr.)



Pin™ Nock
(2 gr.)



G Pin™ Nock
(4 gr.)



G Nock™ 4MM
(7 gr.)



Deep Six™ 4MM Nock
(6 gr.)



Carbon One-#1 Pin
(550-730) (9 gr.)



Carbon One-#2 Pin
(500-410) (9 gr.)

Size	Shaft Weight	Spine @ 28" Span	Shaft O.D.	Min. Stock Length	Apollo	Nock Pin
	GPI	Deflection	Inches	Inches	Grains	
2000	3.4	2.000	.198	28.25	70-One Piece	A/C/E
1800	3.6	1.800	.200	28.50	70-One Piece	A/C/E
1600	3.8	1.600	.202	28.75	70-One Piece	A/C/E
1400	4.2	1.400	.205	29	70-One Piece	A/C/E
1200	5.5	1.200	.211	27.5	50	A/C/E
1070	5.9	1.070	.214	28	50	A/C/E
950	6.2	0.950	.216	28.5	75	Carbon One - 1
840	6.5	0.840	.218	29	75	Carbon One - 1
740	7.2	0.740	.223	29.5	75	Carbon One - 1
670	7.7	0.670	.226	30	75	Carbon One - 1
610	8.1	0.610	.229	30.5	100	Carbon One - 2
560	8.4	0.560	.231	31	100	Carbon One - 2

Size	Points			
	Apollo	Steel	A/C/E	Carbon One
2000	•	•		
1800	•	•		
1600	•	•		
1400	•	•		
1200	•			•
1070	•			•
950	•			•
840	•		•	•
740	•		•	•
670	•		•	•
610	•		•	•
560	•		•	•

ACCURATE. DURABLE. & AFFORDABLE

INSPIRE™

EASTON INSPIRE

- /// Small-diameter, micro-smooth carbon finish
- /// Available in ten sizes
- /// One-piece points included in factory-fletched shafts
- /// Parallel design
- /// Bulk-fletched arrows include points

COMPONENTS



Zinc Point
(50/75 gr. for 570-1200 sizes)



Steel Point
(70 gr. for 1400-2000 sizes)



X Nock™ 5MM
(9 gr.) (570 and 630)



G Nock™ 4MM
(7 gr.)



Deep Six™ 4MM Nock (D6)
(6 gr.)

Size	Shaft Weight	Spine @ 28" Span	Shaft O.D.	Min. Stock Length	Glue-In Point	Nock
	GPI	Deflection	Inches	Inches	Grains	
2000	3.4	2.000	.198	28.25	70	G/D6
1800	3.6	1.800	.200	28.5	70	G/D6
1600	3.8	1.600	.202	28.75	70	G/D6
1400	4.2	1.400	.205	29	70	G/D6
1200	7.2	1.200	.220	27.25	50	G/D6
1000	7.2	1.000	.220	27.5	50	G/D6
900	7.7	0.900	.223	28.5	50	G/D6
750	8.1	0.750	.227	29.5	50	G/D6
630	7.9	0.630	.254	30.5	75	X
570	8.2	0.570	.256	31.5	75	X

Size	Points	
	Zinc	Steel
2000		•
1800		•
1600		•
1400		•
1200	•	
1000	•	
900	•	
750	•	
630	•	
570	•	

SUPER DRIVE 23™

- /// High-strength carbon fiber
 - /// Polished black carbon finish
 - /// Straightness: ± .002"
 - /// Weight tolerance: ± 0.5 grains
 - /// Outside diameter: 23/64" (9.3mm)
- /// World Archery compliant maximum diameter
 - /// Inserts, points, and nocks—sold separately
 - /// Super or G UNI Bushings—included
 - /// Components—sold separately
 - /// Pin adapter—sold separately

Size	Shaft Weight	Spine @ 28" Span	Shaft O.D.	Stock Length	Super 3D Nock	Microlite Super Nock	Super UNI Bushing	G Nock	G UNI Bushing	Pin Nock Adapter	One-piece Point
	GPI	Deflection	Inches	Inches	Grains	Grains	Grains	Grains	Grains	Grains	Grains
325	7.4	0.325	.361	33.25	13	8	19	7	18	13	100 & 125
375	6.9	0.375	.359	32.00	13	8	19	7	18	13	100 & 125
475	6.4	0.475	.356	31.50	13	8	19	7	18	13	100 & 125

COMPONENTS



SUPER DRIVE 25™

- /// Straightness: ± .002"
 - /// Weight tolerance: ± 1.0 grain
 - /// Outside diameter: 25/64"
 - /// Specifically engineered for indoor and 3D
 - /// Black, smooth matte finish
- /// Multi-layer wrapped carbon fiber
 - /// Super or G UNI bushings—included
 - /// Inserts, points, and nocks – sold separately
 - /// Pin Adapter—sold separately

Size	Shaft Weight	Spine @ 28" Span	Shaft O.D.	Stock Length	Super 3D Nock	Microlite Super Nock	Super UNI Bushing	G Nock	G UNI Bushing	Pin Nock Adapter	One-piece Point
	GPI	Deflection	Inches	Inches	Grains	Grains	Grains	Grains	Grains	Grains	Grains
290	7.8	0.290	.396	32	13	8	16	7	18	15	100/125

COMPONENTS



NEW FOR 2019

SUPER DRIVE 27™ PRO ±.002

- /// High-strength carbon fiber
 - /// Polished black carbon finish
 - /// Straightness: ± .005"/Pro ± .002"
 - /// Weight tolerance: ± 0.5 grains
 - /// Outside diameter: 27/64"
- /// Inserts, points, and nocks—sold separately
 - /// Super or G UNI Bushings—included
 - /// Components—sold separately
 - /// Pin adapter—sold separately

Size	Shaft Weight	Spine @ 28" Span	Shaft O.D.	Stock Length	Super 3D Nock	Microlite Super Nock	Super UNI Bushing	G Nock	G UNI Bushing	Pin Nock Adapter	One-piece Point
	GPI	Deflection	Inches	Inches	Grains	Grains	Grains	Grains	Grains	Grains	Grains
270	9	.270	.420	32.125	13	8	19	7	18	14	100-125

COMPONENTS



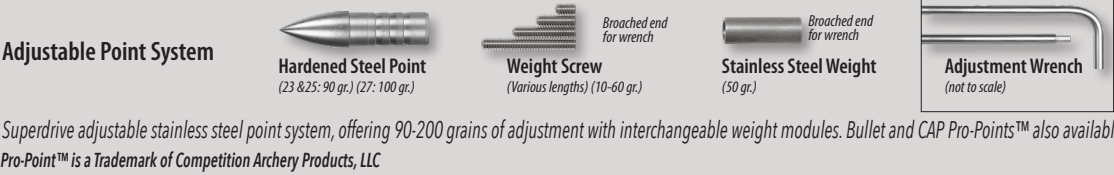
SUPERDRIVE NOCKS

Compatible with all SuperDrive models



ADJUSTABLE POINT SYSTEM

Compatible with all SuperDrive models



FMJ MATCH™

The FMJ Match is the high-performance, high-strength Full Metal Jacket carbon shaft for tournament compound and recurve archers. Provides superior kinetic energy, better long-distance accuracy, and more durability in tough target butts. Made from a high-tensile aluminum jacket over a high-modulus carbon fiber core for ultimate consistency and material synergy.

- /// Reduced 4MM (G) diameter for optimal outdoor performance
- /// Compatible with existing Easton Carbon One components
- /// 7075 aerospace alloy diamond polished anodized silver finish
- /// Factory straight, weight & spine matched
- /// Guaranteed straightness: $\pm .001"$
- /// Weight tolerance: ± 2.0 Grains
- /// Components—sold separately
- /// Complies with World Archery regulations
- /// MADE IN USA

FULL METAL CONFIDENCE AVAILABLE
FOR TARGET COMPETITION SHOOTERS

ALUMINUM
CARBON

Size	Shaft Weight	Spine @ 28" Span	Shaft O.D.	Min. Stock Length	Point
	GPI	Deflection	Inches	Inches	Grains
375	10.3	0.375	.239	32	110/120
400	10.0	0.400	.236	31.5	110/120
450	9.4	0.450	.233	31.25	110/120
490	8.9	0.490	.231	31	110/120
530	8.4	0.530	.226	30.75	90/110

COMPONENTS



Carbon One Stainless Steel Break-off
(90/100/110 gr. • 530 spine only)
(100/110/120 gr. • 375, 400, 450 & 490 spines)



Carbon One-#1 Pin
(9 gr.)



Carbon One-#2 Pin
(9 gr. • all sizes)



Pin™ Nock
(2 gr.)



G Pin™ Nock
(4 gr.)



Deep Six™ 4MM Nock
(6 gr.)

THE ULTIMATE SCORING SHAFT FOR INDOOR MATCHES

X23™ X27™

- /// 7178-T9 aerospace alloy diamond polished anodized silver finish
- /// Straightness: $\pm .001"$
- /// Weight tolerance: $\pm 0.75\%$
- /// Strength (PSI): 105,000
- /// Components—sold separately
- /// X23 Series World Archery Tournament O.D. compliant
- /// MADE IN USA

X23 is O.D. World Archery Tournament compliant.

ALUMINUM

Model	Shaft Size	Shaft Weight	Spine @ 28" Span	Shaft O.D.	Stock Length	UNI Bushing	RPS Insert	One-Piece Point	RPS Point
		GPI	Deflection	Inches	Inches	Grains	Grains	Grains	O.D. Inches
X23	2312	9.5	0.423	.363	33	11	37	100	11/32
X23	2314	10.8	0.391	.357	33.5	10	34	100	11/32
X23	2315	11.8	0.340	.365	34	11	37	100	11/32
X23	2318	13.7	0.300	.365	34.25	12	—	200	—
X27	2712	11.3	0.260	.420	34.5	19	—	150/300	—

COMPONENTS



One-piece Point



Super UNI
Bushings*



MicroLite™ Super
Nock* 6.5MM (8 gr.)



3D Super Nock*
6.5MM (13 gr.)

THE ULTIMATE SCORING SHAFT FOR INDOOR MATCHES

X7 ECLIPSE



- /// 7178-T9 aerospace alloy
- /// Hard-anodized black finish
- /// Straightness: $\pm .001"$
- /// Weight tolerance: $\pm 0.75\%$
- /// Strength (psi): 105,000
- /// G-UNI/Super UNI bushing installed
- /// Nocks and points sold separately
- /// Sizes 1514 through 2214 are World Archery compliant
- /// MADE IN USA

COMPONENTS



One-piece Point



RPS Point



NIBB Point



RPS Insert



G-UNI Bushing*
(for sizes 1914 and smaller)



Super UNI Bushing*
(19 gr.)



MicroLite™ Super Nock*
6.5 MM (8 gr.)



3D Super Nock*
6.5 MM (13 gr.)



G Nock™ 4MM
(for sizes 1914 and smaller) (7 gr.)

Shaft Size	Shaft Weight	Spine @ 28" Span	Shaft O.D.	Stock Length
	GPI	Deflection	Inches	Inches
1514	6.8	1.379	.244	26.6
1614	7.7	1.153	.251	28
1714	8.1	.963	.268	29.5
1814	8.6	.799	.284	30
1914	9.3	.658	.300	31
2014	9.6	.579	.314	32.5
2114	9.9	.506	.328	32.5
2212	8.8	.505	.345	32.5
2213	9.9	.458	.344	33.5
2214	10.4	.425	.348	33.5
2413	10.5	.365	.372	34
2511	9.6	.348	.396	34.5
2512	10.3	.321	.398	34.5
2613	11.5	.265	.414	35

ALUMINUM

ECONOMIC, ACCURATE, & THE ONLY
ARROW APPROVED BY NASP



GENESIS™

- /// 7075 aerospace alloy
- /// Hard-anodized
- /// Straightness: $\pm .005"$
- /// Weight tolerance: $\pm 2.5\%$
- /// Strength (psi): 90,000
- /// UNI bushing—installed
- /// The ONLY arrow approved for all NASP tournaments and events
- /// Available in black, purple, blue, and green
- /// MADE IN USA

COMPONENTS



One-piece Point



G-UNI Bushing*



N Nock™
(7 gr.)

Shaft Size	Shaft Weight	Spine @ 28" Span	Shaft O.D.	Stock Length
	GPI	Deflection	Inches	Inches
1820	12.2	.592	.282	30

ALUMINUM



National Archery in the Schools Program



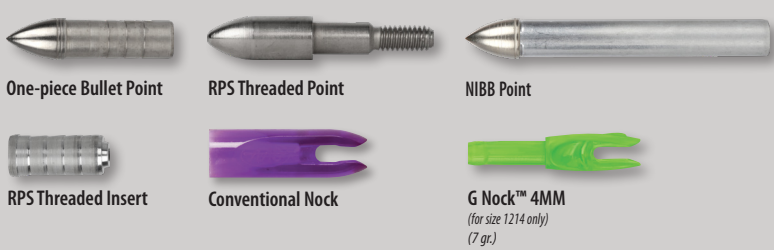
- /// 7075-T9 aerospace alloy
 - /// Hard-anodized finish
 - /// Guaranteed straightness: $\pm .002"$
 - /// Weight tolerance: $\pm 1\%$
 - /// Strength (psi): 96,000
 - /// Super or G UNI bushings—installed
 - /// Components—sold separately
- Sizes:** 1416, 1516, 1616, 1713, 1716, 1813, 1816, 1913, 1916, 2013, 2016, 2114, 2213, 2315

COMPONENTS



- /// 7075 aerospace alloy
 - /// Hard-anodized finish
 - /// Guaranteed straightness: $\pm .005"$
 - /// Weight tolerance: $\pm 2\%$
 - /// Strength (psi): 90,000
 - /// Precision-ground nock swage
 - /// Components—sold separately
- Sizes :** 1214, 1413, 1416, 1516, 1616, 1716, 1816, 1916, 2016
*1214 size uses the direct-fit G Nock

COMPONENTS



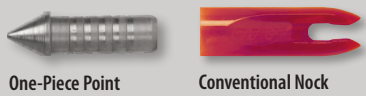
- /// 7075 aerospace alloy
 - /// Hard-anodized black finish
 - /// Guaranteed straightness: $\pm .005"$
 - /// Weight tolerance: $\pm 2\%$
 - /// Strength (psi): 90,000
 - /// Precision-ground nock swage
 - /// Components—sold separately
- Sizes :** 1214, 1413, 1416, 1516, 1616, 1716, 1816, 1916, 2016
*1214 size uses the direct-fit G Nock

COMPONENTS



- /// 7075 aerospace alloy
- /// Hard-anodized gold finish
- /// Guaranteed straightness: $\pm .008"$
- /// Weight tolerance: $\pm 5\%$
- /// Precision-ground nock swage
- /// Size 1618
- /// Components—sold separately

COMPONENTS



NOCKS



N Nock™- Precision-molded,Press-fit

- Fits Genesis
- Colors: red, white, green, and yellow
- Packaging (7 gr.) - Dozen Pack 100-count Bulk



G Nock™ - Precision-molded, Press-fit (4MM)

- Large (098) or small (088)
- Fits UNI Bushing
- See arrow models for compatibility
- Colors: deep red, white, green, orange, red, blue, and black
- Packaging (7 gr.) - Dozen Pack 100-count Bulk



X10® Overnock - Polymer Alloy, Press-fit

- Fits X10, see arrow models for fitment
- Colors: orange, yellow, and green
- Packaging (6 gr.) - Dozen Pack



Super Nock® and S Nock™ -Polymer Alloy, Press-fit (6.5MM)

- Fits FullBore, Fatboy, and shafts with Super UNI Bushings
- Colors: green, orange, yellow, black, and white
- Packaging (13 gr.) - Dozen Pack 100-count Bulk

NEW



MicroLite™ Super Nock® -Polycarbonate, Press-fit (6.5MM)

- Fits shafts with Super UNI Bushings
- Colors: NEW white, red, green, yellow, and smoke
- Packaging (8 gr.) - Dozen Pack 100-count Bulk



H Nock™ - Polycarbonate, Press-fit (6MM)

- Fits H Diameter Carbon Shafts
- Colors: green, white, blue, yellow, orange, deep red, and pink
- Packaging (7 gr.)- Dozen Pack



3D Super Nock® -Polycarbonate, Press-fit (6.5MM)

- Fits FullBore, Fatboy, and shafts with Super UNI Bushings
- Colors: red, lemon-lime, pink, black, green, orange, white, purple, crystal, smoke, and blue
- Packaging (13 gr.) - Dozen Pack 100-count Bulk



Conventional PlastiNock -Swaged Shafts 9/32 (7.1 gr.) 5/16 (10.4 gr.) 11/32 (14 gr.)

- Fits swaged aluminum arrows
- Colors: blue, black, green, orange, white, red, and teal
- Packaging - Dozen Pack 100-count Bulk



X Nock™ (5MM)

- Dozen Pack Colors (9 gr.): green, black, white, yellow, and orange
- 100 Pack Colors: blue and smoke
- Suitable for compound competition



Deep Six™ Nock - Polycarbonate, Press-fit (4MM)

- Colors: lemon-lime, emerald green, orange, blue, and red
- Suitable for compound competition
- Packaging (6 gr.) - Dozen Pack 100-count Bulk



Super-UNI Bushing® - Precision Alloy

- Fits aluminum arrows
- Fits Fatboy, Superdrive 25, and FullBore arrows*
- Packaging - Dozen Pack



G-UNI Bushings® - Precision Alloy

- Fits aluminum arrows
- Fits A/C/C, LightSpeed, Platinum (1914 and smaller), Fatboy, Superdrive 25 and FullBore arrows*
- CB UNI (12 gr.)
- Packaging - Dozen Pack

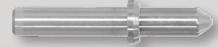
UNI-BUSHINGS

PINS AND PIN NOCKS



X10® Pin 7075 - Alloy

- Fits X10 and ProTour Arrows (670-770)
- Packaging (8 gr.) - Dozen Pack



ProTour™ Pin 7075 - Alloy

- Fits X10 ProTour Arrows (380-620)
- Packaging (8 gr.) - Dozen Pack



Pin Nock™ Polycarbonate Press-fit Indexable

- Large or small sizes available
- Fits all nock pins, see arrow models for fitment
- Colors: blue, pink, green, red, orange, lemon-lime, & crystal
- Packaging (2 gr.) - Dozen Pack



G Pin Nock™ Polycarbonate Press-fit Indexable

- Fits all nock pins, see arrow models for fitment
- Colors: blue, green, red, orange, lemon-lime, & crystal
- Packaging (4 gr.) - Dozen Pack



A/C/E® Pin 7075 - Alloy

- Fits All A/C/E, A/C/G Carbon One (810-1150) and Apollo (1200-1070)
- Packaging (8 gr.) - Dozen Pack



A/C/G™ Pin 7075 - Alloy

- Fits All A/C/G (540-430)
- Packaging (8 gr.) - Dozen Pack



Carbon One™ #1 Pin 7075 - Alloy

- Fits Carbon One (550-730) and Apollo (740-950)
- Packaging (9 gr.) - Dozen Pack



Carbon One™ #2 Pin 7075 - Alloy

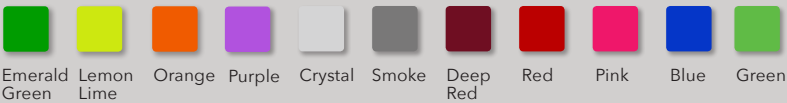
- Fits Carbon One (500-410) and Apollo (560-670)
- Packaging (9 gr.) - Dozen Pack

NOCK COLORS- see model specific information for availability

SOLID



TRANSPARENT



TARGET POINTS



Bullet Point - Nickel-plated Hardened Steel

- Fits aluminum shafts, Fatboy
- 80 and 100 grains
- Packaging - Dozen Pack



CB™ Point - Nickel-plated Hardened Steel

- Fits Lightspeed Models
- 80 and 100 grains
- Packaging - Dozen Pack



One-Piece & Apollo Point– Nickel-plated Hardened Steel

- Fits A/C/E, A/C/C, A/C/G, Carbon One and Apollo (810-1150) models
- 50 / 75 / 100 grains
- Packaging - Dozen Pack



A/C/C™ One-Piece Parabolic Point – Nickel-plated Hardened Steel

- Fits A/C/C and Carbon One Arrows
- 80 and 100 grains
- Packaging - Dozen Pack



Steel Point

- Carbon One, Apollo, Inspire
- 70 grain
- For sizes 1400-2000



NIBB Point - Nickel-plated Hardened Steel and Precision Alloy Shank

- Fits Aluminum shafts, A/C/C and Carbon One arrows
- Packaging - Dozen Pack



SuperDrive 25 One-piece Point

- 100 & 125 grains



Inspire Target Point

- For sizes 570-1200

SuperDrive Series Adjustable Point System



SuperDrive 23 Hardened Steel Point

- One-Piece (100 - 125 grains)
- Adjustable (90 gr.)



SuperDrive 27 Hardened Steel Point

- One-Piece (100 - 125 grains)
- Adjustable (100 gr.)



SuperDrive 25 One-piece Point

- One-Piece (100 - 125 grains)
- Adjustable (90 gr.)



Stainless-Steel weight

- 50 grains



Weight Screw

- Various lengths (10 - 60 grains)

THREADED POINTS



A/C/E® 5-44 - Nickel Plated Hardened Steel

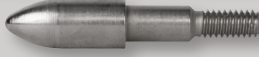
- Fits A/C/E and A/C/G (610-1500)
- 31 / 36 / 41 / 46 / 51 grains
- Packaging - Dozen Pack



8-32 Multi Point

17/64" - 75 / 85 / 100/125 gr.
9/32" - 75 / 85 / 100/125 gr.
5/16" - 85 / 100 / 125 gr.
11/32" - 85 / 100 / 125 gr.

- Packaging - Dozen Pack 1000 Count Box



RPS - Nickel-plated Hardened Steel

17/64" - 50 / 60 / 70 / 80 / 90 / 100 / 110 / 125 grains
9/32" - 50 / 60 / 70 / 80 / 90 / 100 / 110 / 125 grains

- Packaging - Dozen Pack

BREAK-OFF POINTS



X10® Stainless Steel Break-Off

- Fits X10 and ProTour
- 80 to 100 and 100 to 120 grains
- Packaging - Dozen Pack



X10® Ballistic Tungsten Break-Off

- Fits X10 and ProTour
- 100 to 120 grains & 100 to 140 grains
- Packaging - Dozen Pack



A/C/E® Stainless Steel Break-Off

- Fits A/C/E, A/C/G (610-1500)
- Three Models - 60 to 80, 80 to 100 and 100 to 120 grains
- Packaging - Dozen Pack



A/C/G™ Stainless Steel Break-Off

- Fits A/C/G (540-430)
- 100 to 120 grains
- Packaging - Dozen Pack



Carbon One™ Steel Break-Off

- Fits Carbon One (600-1150)
- Three Models - 70 to 90, 90 to 110 and 100 to 120 grains
- Packaging - Dozen Pack

INSERTS



CB Insert

- Fits Lightspeed models
- Packaging - Dozen Pack



Half-out RPS Insert - Precision Alloy Hard Anodized

- Fits A/C/C (3L-18 to 3-39) arrows
- Packaging - Dozen Pack



RPS Insert

- Fits aluminum arrows, A/C/C (3-49 to 3-71) and Fat Boy
- Packaging - Dozen Pack 1000 Count Box



A/C/E®, A/C/G™ and 5-44 Screw-in Insert - Nickel-plated

- Hardened steel and precision alloy tube
- Fits all A/C/E, A/C/G (610-1500) and Apollo
- 39 / 49 / 59 grains
- Packaging - Dozen Pack



SuperDrive 23 Insert

- 40 grains



SuperDrive 25 Insert

- 50 grains

*see charts on select model pages

Pro-Point™ is a Trademark of Competition Archery Products, LLC



NEW LIMITED EDITION COLORS

CONTOUR CS™

A favorite of champions, the Contour CS™ features the most extreme stiffness to weight ratio we have yet developed for a stabilizer. Featuring aerospace-grade graphite fiber, the Contour CS is optimized for shooters looking for the stiffest possible stabilizer with superior hold and a wind-cheating slim profile for rock-solid aiming. Contour CS™—the most advanced stabilizer ever, from the company that pioneered carbon stabilizers—Easton.

	Main Stabilizers			Side Rods	
Size	27 in-69 cm	30 in - 76 cm	33 in - 84 cm	12 in-30 cm	15 in - 76 cm
Ounces	4.0	4.3	4.5	2.6	2.85
Grams	115	122	128	74	81



**includes reusable protective sleeve and 1/4-20 to 5/16-24 adapter.*

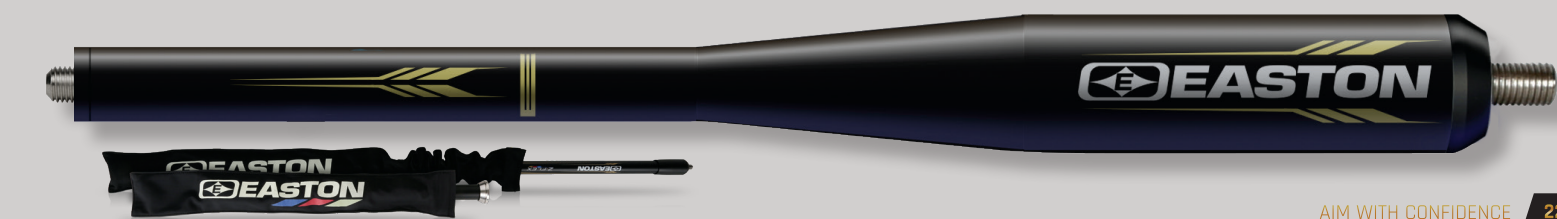


CONTOUR™

Proven performance Contour stabilizer uses a complex carbon fiber construction to damp out post-shot vibration while providing an unmatched aiming experience, even in crosswinds. The Windcutter-360™ design of Contour promotes a steady confidence in crosswinds while the large-diameter base promotes enhanced vibration reduction with no need for rubber decouplers. Choose the super-light, original Contour for a slightly softer feel on follow-through. Light and efficient, Contour is compatible with 1/4"-20 weight systems or 5/16"-24 flat vari-weights for competitors seeking the most compact setup.

	Main Stabilizers				Side Rods		
Size	24 in-61 cm	27 in-69 cm	30 in-76 cm	33 in-84 cm	10 in-25 cm	12 in-30 cm	15 in-38 cm
Ounces	3.7	4.0	4.3	4.6	2.5	2.7	2.9
Grams	106	114	123	131	71	75	83

**includes reusable protective sleeve and 1/4-20 to 5/16-24 adapter.*



**Z-Flex, Contour, Contour CS, and Halcyon stabilizers come with a reusable protective sleeve*

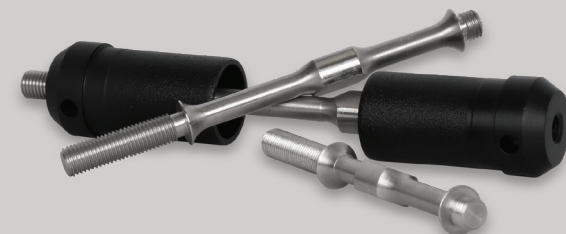
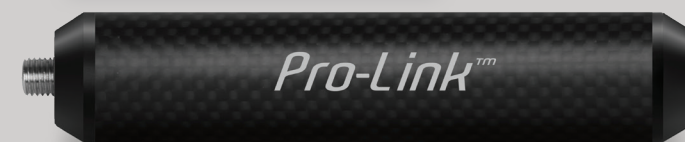
WINNING STABILITY



PRO-LINK™ EXTENDER

The podium-proven Easton Pro-Link stabilizer extension is reinforced with a full-length Internal Stainless Steel Reinforcement Beam. This super-strong beam links the precision internal-bonded ferrules at each end to create a torque-resistant system capable of handling heavy loading, abusive v-bar torquing, and the stress of high-energy bows. The internal stainless steel beam of Pro-Link Extension has been tested and proven at the highest levels of competition by some of the best archers on the planet. Pro-Link is also the stiffest extension we've ever made. The precision-made Pro-Link extension is ideally matched to an Easton stabilizer, and is fully compatible with most other ATA compliant stabilizer systems with 5/16-24 threads.

	PROLINK Extender		
Size	6 in-15 cm	5 in - 13 cm	4 in - 10 cm
Ounces	4.6	4.3	4.0
Grams	131	122	113



Pro-link internal steel beam system

NEW FOR 2019

HALCYON™

STABILIZERS



SEE PRODUCT DETAILS AT EASTONARCHERY.COM/HALCYON

Engineered for both compound and recurve. At less than 15MM diameter, Halcyon™ is the smallest diameter carbon stabilizer ever from Easton. Halcyon™ features 360° Windcutter™ technology for the steadiest possible hold.



Z-FLEX™ Provides extreme stiffness and high-moment weight system compatibility with minimum aiming float. AVRS™ chamber for rapid vibration amplitude dissipation after the shot. Z-Flex is compatible with 5/16"-24 flat vari-weights.

	Main Stabilizers				Side Rods		
Size	24 in-61 cm	27 in-69 cm	30 in-76 cm	33 in - 84 cm	10 in-25 cm	12 in-30 cm	15 in-38 cm
Ounces	5.8	6.2	6.5	6.9	3.2	3.5	3.9
Grams	164	175	186	196	92	99	111

**includes reusable protective sleeve*

- /// Ultra-stiff design for steady aiming
- /// AVRS™ damping for active-shock management
- /// Lowest mass and highest efficiency



A/C PRO™ Easton's technologically advanced A/C Pro stabilizers are among the most efficient stabilizers ever developed. The Ultra-High Resonance A/C Pro stabilizer is equipped with the proven, low-mass AVRS™ system. Compatible with 1/4"-20 weight systems or 5/16"-24 flat vari-weights.

	Main Stabilizers			Side Rods		
Size	24 in-61 cm	29 in-74 cm	34 in-86 cm	9 in-23 cm	10 in-25 cm	11 in-28 cm
Ounces	4.3	5.0	6.0	1.7	1.8	1.9
Grams	122	142	170	48	51	54

- /// Proven A/C construction
- /// AVRS™ damping system for shock management
- /// Stiff design for steady aiming



**Z-Flex, Contour, Contour CS, and Halcyon stabilizers come with a reusable protective sleeve*



MICROFLEX™

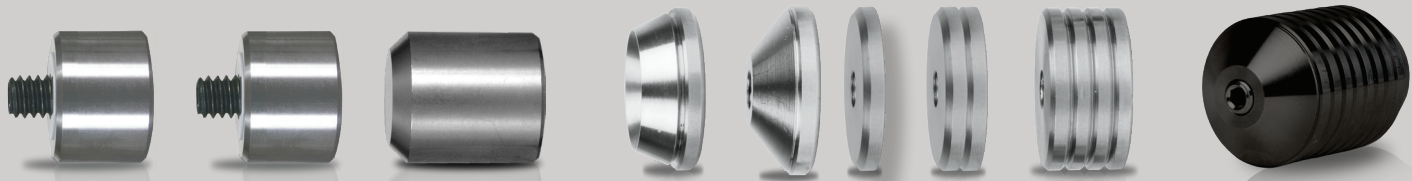
The MicroFlex™ stabilizer provides an excellent balance of low weight, high stiffness and smaller diameter to cheat the wind, in a highly efficient, High Modulus Carbon design. Micro-Flex™ is compatible with 5/16"-24 flat vari-weights or traditional 1/4-20 weights.

Main Stabilizers				Side Rods	
Size	24 in-61 cm	27 in-69 cm	30 in-76 cm	10 in-25 cm	12 in-30 cm
Ounces	5.8	6.2	6.5	3.2	3.5
Grams	164	175	186	92	99



- /// Ultra-stiff design for steady aiming
- /// Fast-damping high frequency response
- /// AVRS damping for active-shock management
- /// 100% high modulus carbon at a smaller 0.600" diameter

VARI-WEIGHTS



ORIGINAL VARI-WEIGHTS 1/4-20 THREAD

	Ounces	Grams
Module	1.5	43
1/2 Module	0.75	21
Cap	1.5	43

FLAT VARI-WEIGHTS 5/16-24 THREAD

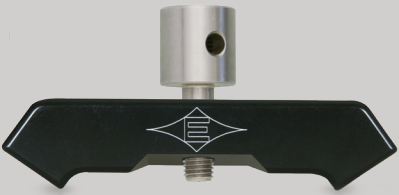
	Ounces	Grams
Contour Base	2.0	57
Z Flex Base	2.0	57
1 Oz.	1.0	28.5
2 Oz.	2.0	57
4 Oz.	4.0	114

*available in black

MOUNTS

FIXED V-BAR WITH BOLT

- /// Works with all Easton stabilizer systems
- /// Black hard-anodize finish
- /// 35° flat and 35° X 17° down-angle models
- /// 5/16" stainless-steel connector bolt- included



ADJUSTABLE V-BAR WITH BOLT

- /// Infinite adjustability
- /// Machined gears in joint for solid lock-down
- /// Suitable for compound or recurve bows
- /// Stainless steel eye bolt included



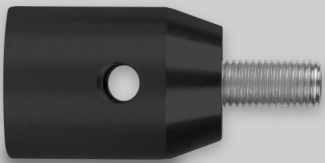
ADJUSTABLE SIDE ROD ADAPTER

- /// Infinite adjustability
- /// Machined gears in joint for solid lock-down
- /// Stainless steel eye bolt included



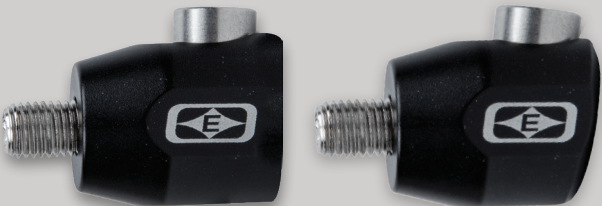
CONTOUR AND Z-FLEX™ V-BAR CONNECTOR BOLT

- /// Cleanly interfaces V-bars to extenders or bows
- /// Flush, nested fit for Contour or Z-Flex rods
- /// Lightweight aluminum alloy, hard anodized finish
- /// Thru-hole for wrench lock-down



QUICK DISCONNECT MOUNT

- /// Stainless steel
- /// 7075 alloy
- /// Precision design
- /// Zero and 10 degree drop models available





(A) SMALL DIAMETER MULTI-KIT
• Includes 2" Mini Helical tool and extra set of straight offset arms
• For all arrow materials and diameters smaller than 20/64"

(C) LARGE DIAMETER MULTI-KIT
• Includes 5" Straight-Offset Jig and extra set of 2" Mini-Helical arms
• For all arrow materials and diameters larger than 20/64"

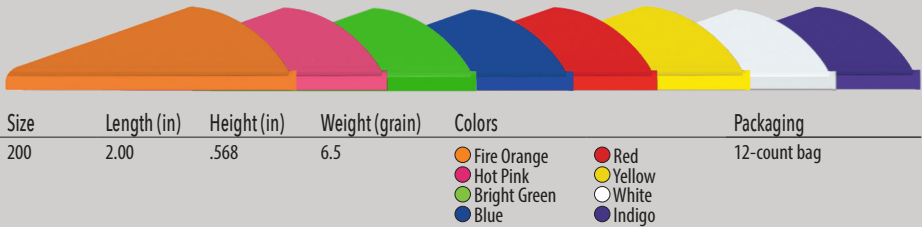
(B) SMALL DIAMETER 2" MINI HELICAL TOOL
• Includes 2" Mini Helical tool
• For all arrow materials and diameters smaller than 20/64"

(D) LARGE DIAMETER 5" STRAIGHT OFF-SET TOOL
• Includes 5" Straight-Offset Jig
• For all arrow materials and diameters larger than 20/64"

NEW

2" BULLY™ VANES

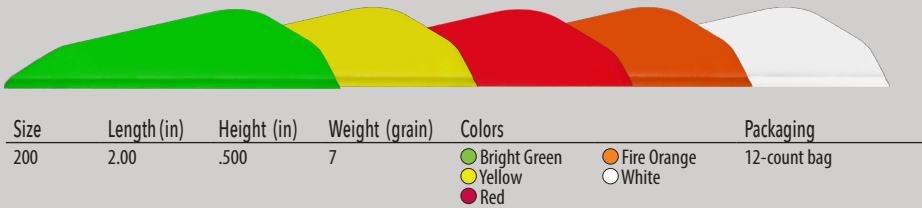
Ultra-stiff design for high speed stability



NEW

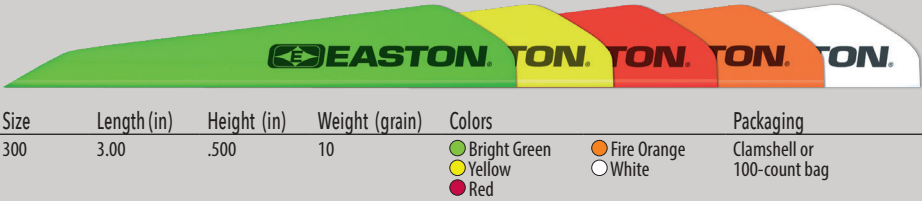
2" BULLY BOAT TAIL™ VANES

- Ultra-stiff design for high speed stability
- Exclusive Boat Tail shape for superior accuracy



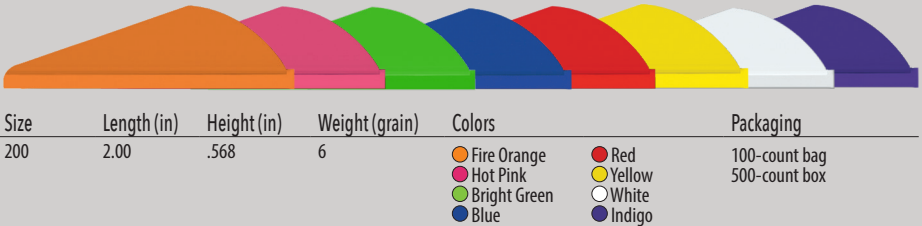
3" BOAT TAIL™ (BTV) VANES

- Ultra-stiff design for high speed stability
- Exclusive Boat Tail shape for superior accuracy
- Ideal for crossbow



XPV™ VANES

Conventional vanes for broadhead use. Compare to Blazer® vanes.



VANES, FEATHERS, SPIN WINGS

All weights are within ±0.5 grain

DIAMOND VANES®



Size	Length (in)	Height (in)	Weight (grain)	Colors		Packaging
175	1.750	.375	3	● Bright Green	● Fire Orange	Clamshell or 100-count bag
235	2.375	.375	4	● Sunset Gold	● White	
280	2.875	.500	6	● Yellow	● Black	
380	3.875	.500	8		● Hot Pink	

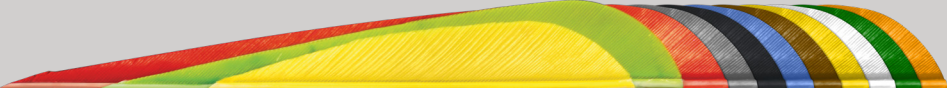
TITE FLIGHT™ VANES

Special rib adds stiffness to cut in-flight flutter and noise



Size	Length (in)	Height (in)	Weight (grains)	Colors		Packaging
175	1.750	.375	3	● Hot Pink	● Black	100-count bag 200-shield cut
200	2.000	.330	4	● White	● Fire Orange	
				● Bright Green	● Yellow	

FEATHERS



Size	Length (in)	Height (in)	Weight (grain)	Colors		Packaging
3.0 R	3.000	.400	1.3	● Yellow FL	● Brown	Clamshell or 100-count bag
4.0 R	4.000	.550	2.8	● Chartreuse	● Yellow	
5.0 R	5.000	.600	4.5	● Red	● White	
				● Gray	● Green	
				● Black	● Orange	
				● Blue		

SPIN WING VANES™

1.75-inch vanes available in right or left • Packaging - 50-count bag



Colors ● Black ● White ● Blue ● Red ● Yellow

Spin Wing Vane is a trademark of Range-O-Matic Archery Company. Blazer® is a trademark of Bohning Inc.



Doug Easton, Founder

TOOLS & SUPPLIES

QUICKBOND™ INSERT ADHESIVE

- Easy to identify orange color
- Impact resistant
- Ready to shoot in 15-30 minutes
- Sizes: 0.5 FL oz.
- HIT approved



QUICKBOND™ VANE ADHESIVE

- Ultimate strength
- Bonds in seconds
- Primer Pen compatible
- Sizes: 0.5 FL oz.



CONVENTIONAL BOWSTRING WAX

- Protects bowstring from wind and weather
- Specially formulated for modern bowstring materials



QUICKBOND™ VANE PRIMER PEN

- Compatible with all vane adhesives
- Improves bond strength & reduces drying time
- Improves adhesion for hard-to-stick vanes



FASTSET™ VANE GEL

- Sizes: 3 gram



FLETCH-TITE® PLATINUM

- Size: 22-gram tube



CROSSBOW RAIL LUBE

- Full synthetic formula provides maximum lubrication for crossbow rails
- Protects string from damage



HOT MELT ADHESIVE

- Low temperature
- 3" x 1/2" stick
- Available in 10" shop stick



3-STEP BOWSTRING MAINTENANCE KIT

- String Cleaner –removes dirt, wax and contaminants from bowstring
- Bowstring Revitalizer–restores color and penetrates to the core of the string for reduced friction and maximum shot life
- Full Synthetic Bowstring Wax–protects longer & better than conventional waxes



FULL-SYNTHETIC ARROW LUBE

- Full-synthetic formula for easy arrow extraction
- Scent free, easy to apply
- Suitable for all types of arrows
- Most advanced arrow lube ever created
- Quiver-mount neoprene sleeve included



WEDGE ARROW PULLER

- Proprietary compound for maximum arrow grip
- Internal-molded sides for improved wet-weather pulling
- Ergonomic wedge shape for comfortable fit



PUCK ARROW PULLER

- Proprietary high-grip compound for maximum arrow grip
- Flat puck design for maximum grip leverage
- Best for tight single spot groups



UNIVERSAL NOCK TOOL

- Handy design allows for installation and removal of all nock sizes
- Includes a threaded shank for easy removal of broken nocks



BROADHEAD WRENCH

- For safe installation and removal of broadheads from arrows



BCY NOCK & PEEP SERVING

- .020" nylon thread perfect for tying nock sets and peep-sights
- Includes 1m red thread and 1m black thread



BCY #24 D-LOOP ROPE

- The professionals' choice and #1 choice of archers worldwide
- Stiff-braided POLY fibers
- Good, consistent burn
- Available in 1m lengths and 50ft spools



ANGEL MAJESTY SERVING

- Two sizes .018 and .021.
- Highest quality serving available
- Greatest dimensional stability
- Extremely long wearing
- Made in Japan

.018 –100 meters/109 yds. per spool
.021 –80 meters/87 yds. per spool



BCY POLYGRIP CENTER SERVING THREAD

- .020" polyester thread perfect for center serving
- 75-yard spool



ELITE NOCK AND D-LOOP PLIERS

- Maximizes mechanical advantage for tightest possible D-loops
- Patented dual-jaw design
- Convenient and versatile archery tool
- Six tools in one



PRO ARCHERY NEEDLE-NOSE PLIERS

- A must have for any serious bow mechanic
- Rubber-coated handle
- Needle-nose plier design with archery specific features for D-loop stretching and hot-melt point installation



PRO HEX FOLD UP SET - STANDARD

- Standard Sizes: 3/16, 5/32, 9/64, 1/8, 7/64, 3/32, 5/64, 1/16, .050



PRO HEX FOLD UP SET - XL

- XL Sizes: 1/4, 7/32, 3/16, 5/32, 9/64, 1/8, 7/64, 3/32, 5/64



PRO HEX FOLD UP SET - METRIC/STANDARD COMBO

- Sizes: 1/16, 5/64, 3/32, 7/64, 1/8, 9/64, 5/32, 3/16
- Metric: 1.5, 2.5, 3.0, and a 1/8" flat blade screwdriver



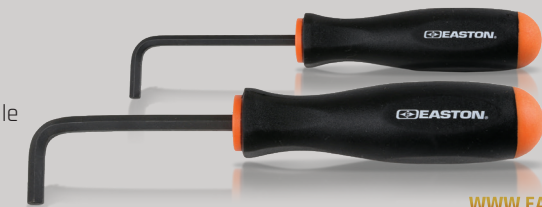
PRO HEX STUBBY 10 PIECE "L" WRENCH SET - XL

- Short arm design for reaching into tight fitting screws
- Perfect for working around sights & rests
- XL Sizes: 1/16, 5/64, 3/32, 7/64, 1/8, 9/64, 5/32, 3/16, 7/32, 1/4



PRO HEX LIMB MASTER ALLEN WRENCHES

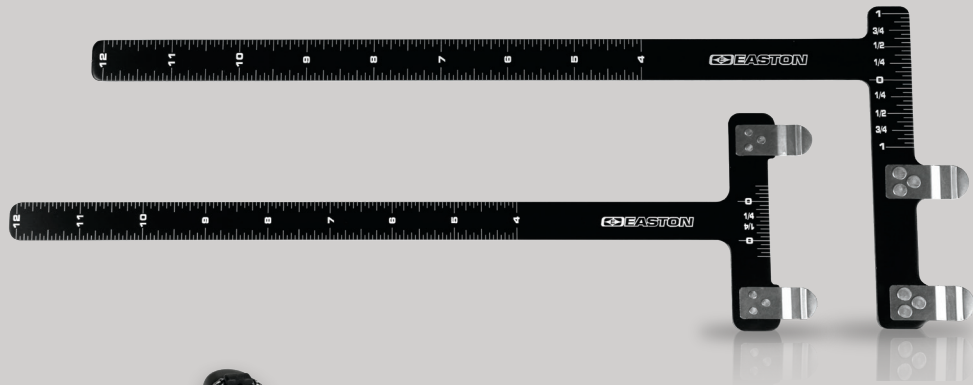
- Long arm hex wrench installed in comfortable molded rubber handle
- Perfect for adjusting limb bolts
- Sold individually in sizes 7/32 and 1/4



TOOLS & SUPPLIES

L BOWSQUARE (COMPOUND) T BOWSQUARE (RECURVE)

- Lightweight, strong aluminum
- Precision laser-etched rule
- Critical for precise bow tuning & set up



RECURVE BOW STRINGER

- Molded rubber-cupped stringer recommended for stringing target recurve bows
- Makes stringing safe and easy



9-PIECE ARROW PREP TOOL KIT

- Innovative kit cleans and abrades the interior shaft surface for proper point adhesion and maximum bond strength
- 9-piece kit fits all sizes of arrow shafts from 4MM to max 27/64" diameters



ARCHERY ESSENTIALS™ 12-PIECE PRO SHOP TOOL KIT, 8-PIECE VALUE PACK, AND 6-PIECE CROSSBOW ESSENTIALS KIT

- Kit items save 30% versus items sold separately
- Both kits include a zippered Case Cube that comes with peel-off hook and loop panel to attach to bow cases with fleece-lined interiors

12 and 8 Piece Kits Include:

- Extra Large Folding Allen Wrench Set
- Nock Installation & Removal Tool
- Wedge Arrow Puller
- Zippered Case Cube
- Bowstring Wax
- Serving Thread
- D-Loop Rope
- Broadhead Wrench

12-Piece Kit Adds:

- D-Loop Pliers
- Bow Square- L Model
- Small Folding Allen Wrench Set
- Arrow Prep Tool Kit

6-Piece Crossbow Kit includes:

- Small Folding Allen Wrench Set
- Zippered Cube Case
- Rail Lube Wax
- Wedge Arrow Puller
- Broadhead Wrench
- Scope Lens Cleaner Cloth



12-Piece Pro

8-Piece Value

6-Piece Crossbow

SHOOTING ACCESSORIES

STAY SHARP™ BROADHEAD CASE

- Patent-pending design ensures broadhead sharpness by supporting ferrules without contacting blades
- Hold six mechanical or fixed-blade broadheads
- Durable ABS body with snap-fit locking Polycarbonate end caps
- Compatible with most Deep-Six and standard 8-32 broadheads
- Dimensions: Approximately 5"W x 4"H x 2"D



DELUXE ARM GUARDS

- Progressive designs molded from durable poly-carbonate material
- Durable elastic straps ensure a snug fit
- Available in oval and "dog" bone shapes
- Colors: Blue, Red, Yellow, and Smoke



"Dog Bone"

Oval

CHEST PROTECTOR

- Unique comfort-fit design
- Breathable air-mesh construction
- Easy-adjust shoulder
- Sizes: Right and left-handed models: XS, S, M, L, XL and XXL
- Color: Black/White



COMFORT FLEX ARM GUARD

- Elastic arm band with adjustable cord locks
- Flexible molded composite material
- One size fits all
- Colors: Black



STIFF SLING

- Clean design
- Vibration reducing molded mount
- Stiff sling material holds its shape for quick access
- Colors: Black, Camo, Green, Pink, Blue, Red, and Orange



DELUXE PARACORD DIAMOND SLING

- Comfortable leather mount
- Deluxe wide cobra braid
- Easy to adjust
- Colors: Black, Camo, Green, Pink, Blue, Red, and Orange



NEOPRENE WRIST SLING

- Durable, lightweight neoprene construction
- Easy-adjust strap

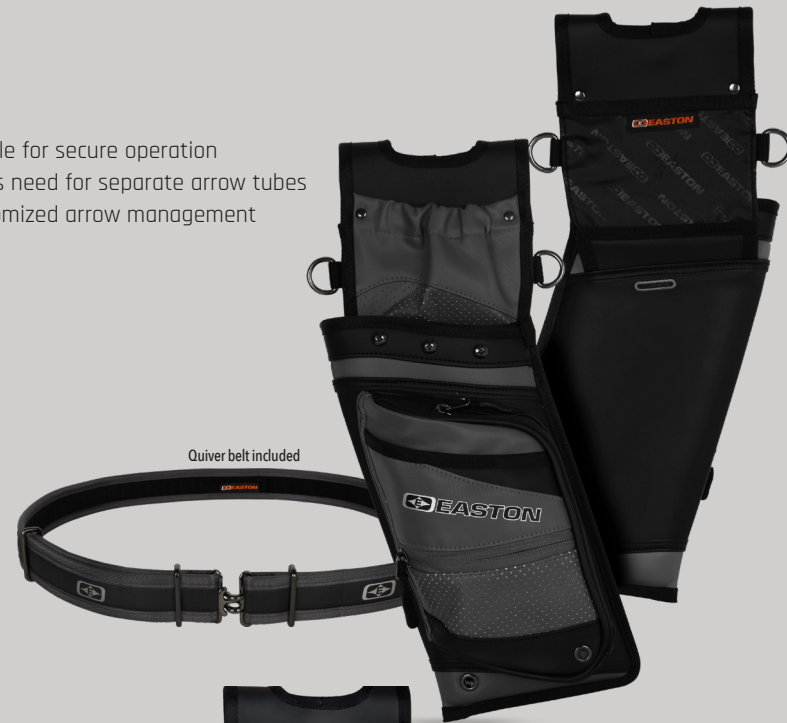


COMPETITION QUIVERS



ELITE FIELD QUIVER WITH BELT

- European-inspired luxurious design
- Technical synthetic leather construction
- Infinitely adjustable, yet sturdy, Elite quiver belt with T-style buckle for secure operation
- Semi-rigid rear-facing compression-molded arrow body eliminates need for separate arrow tubes
- Fleece-lined interior and removable arrow dividers for quiet, customized arrow management
- Integrated bow-square slot and dual accessory attachment rings
- Matching quiver belt included-release pouch sold separately
- Left-hand models available in Carbon Black and Grey only
- Colors: Red, Blue, Grey, Carbon Black, and White



ELITE QUIVER BELT

- Sizes: One size fits most
- T-style buckle
- Included with Elite quivers—also sold separately
- Colors: Red, Blue, Grey, Carbon Black, and White



ELITE RELEASE POUCH

- Sizes: One size fits most



NEW FOR 2019

ELITE TAKEDOWN HIP QUIVER* WITH BELT

- Technical sport-fabric construction
- Infinitely adjustable, yet sturdy, Elite quiver belt with T-style buckle for secure operation-included
- Allows quiver body tube to separate from belt loop for easy storage
- Semi-rigid front-facing compression-molded arrow body eliminates need for separate arrow tubes
- Fleece-lined interior and removable arrow dividers for quiet and customized arrow management
- Directional locking snap removable oversized upper magnetic-closure pocket or accessory clip
- Integrated bow-square slot and dual accessory attachment rings
- Matching quiver belt included- release pouch sold separately
- Left-hand models available in Carbon Black and Grey only
- Colors: Red, Blue, Grey, Carbon Black, and White



Accessory Clip (included)



Removable Pocket (included)



Release Pouch (sold separately)

*Modular system can accommodate multiple configurations



DELUXE FIELD QUIVER WITH BELT

- High-denier woven fabric construction
- Semi-rigid rear-facing compression-molded arrow body eliminates the need for separate arrow tubes
- Fleece-lined interior and removable arrow dividers for quiet and customized arrow management
- Adjustable, sturdy Deluxe Quiver belt with T-style buckle included
- Integrated bow-square slot and dual accessory attachment rings
- Release pouch sold separately
- Left-hand models available in Black and Silver only
- Colors: Teal, Silver, Green, Red, Blue, Purple, and Black



DELUXE QUIVER BELT

- Sizes: One size fits most
- Innovative hook-and-loop adjustment
- Easy On/Off T-Buckle connection



DELUXE RELEASE POUCH

- Sizes: One size fits most



NEW FOR 2019

DELUXE TAKEDOWN HIP QUIVER WITH BELT

- Allows quiver body tube to separate from belt loop for easy storage
- High-denier woven fabric construction
- Semi-rigid front-facing compression-molded arrow body eliminates the need for separate arrow tubes
- Adjustable, sturdy Deluxe Quiver belt with T-style buckle included
- Fleece-lined interior and removable arrow dividers for quiet and customized arrow management
- Attached upper magnetic-closure pocket
- Integrated bow-square slot and dual accessory attachment rings
- Release pouch sold separately
- Left-hand models available in Black and Silver only
- Colors: Teal, Silver, Green, Red, Blue, Purple, and Black



RECREATIONAL QUIVERS



FLIPSIDE™ 4-TUBE HIP QUIVER WITH BELT

- Innovative design fits both right and left-hand shooters
- Includes one-size-fits-most adjustable quiver belt
- Rugged high-denier POLY construction
- Reversible hook-and-loop upper and lower pockets for wear on right or left side
- Durable injection-molded arrow separator tubes
- Integrated T-square and pen/pencil slots
- Multiple accessory attachment rings
- Colors: Flo-Green, Teal, Black, Red, Blue, Pink, Lost Camo® XD, and Realtree Edge®



*Lost Camo XD is a registered trademark of MCP IP LLC.
RealTree Edge and RealTree Xtra are trademarks of Jordan Outdoor Enterprises, Ltd.*



FLIPSIDE™ 3-TUBE HIP QUIVER

- Innovative design fits both right and left-hand shooters
- Reversible hook-and-loop pocket for right/left side wear
- Rugged high-denier POLY construction
- Stainless steel belt clip attachment
- Integrated accessory attachment grommet
- Durable injection-molded arrow separator tubes
- Integrated T-square slot
- Colors: Flo-Green, Teal, Black, Red, Blue, Pink, Lost Camo® XD, and Realtree Edge®



*Lost Camo XD is a registered trademark of MCP IP LLC.
RealTree Edge and RealTree Xtra are trademarks of Jordan Outdoor Enterprises, Ltd.*



FLIPSIDE™ 2-TUBE HIP QUIVER

- Innovative design fits both right and left-hand shooters
- Rugged high-denier POLY construction
- Stainless steel belt clip attachment
- Durable injection-molded arrow separator tubes
- Colors: Flo-Green, Teal, Black, Red, Blue, Pink, Lost Camo® XD and Realtree Edge®



*Lost Camo XD is a registered trademark of MCP IP LLC.
RealTree Edge and RealTree Xtra are trademarks of Jordan Outdoor Enterprises, Ltd.*



REPLACEMENT FLIPSIDE ARROW TUBE



REPLACEMENT BELT CLIP



RANGELITE™ PINK HIP QUIVER

- Lightweight design
- Molded shank and arrow separator
- Easy-access pockets
- Top pocket for releases, pens or smart phones
- Available in right or left hand configurations
- Internal pocket dividers

BOW CASES

ELITE 4416 DOUBLE ROLLER BOW CASE

- Two full-size target bow compatible
- Three field-replaceable roller bearing wheels
- Available in 44"Lx16"Wx10"H outside dimensions
- Double-walled protection – composite armor shield + foam 360° exterior padding
- Case-cube compatible double fleece main compartment
- Double seatbelt system to securely anchor bows
- Padded internal divider blanket for layered storage
- Five interior accessory pockets, adjustable padded walls
- Three expanding outside luggage compartments
- Four exterior accessory pockets
- The best YKK® reverse coil double zipper pulls
- Compatible with Easton arrow tote
- Airline Travel cover recommended (sold separately)
- Available in Black/Grey/Orange



DELUXE 3915 & 3615 COMPOUND/RECURVE ROLLER BOW CASE

- Advanced wheeled compact travel case for compound/recurve bows
- Triple field-replaceable roller bearing wheels
- Double seatbelt system to securely anchor bows
- Three internal accessory pockets
- Available in two sizes (36"Lx15"Wx9"H) and (39"Lx15"Wx9"H)
- Compatible with the Easton Deluxe 33" & 36" arrow cases
- Case-cube compatible interior fleece hook-and-loop lining with seatbelt strap bow retention system
- Hybrid hard/soft shell 360° perimeter protection for maximum contents protection
- Airline travel cover recommended (sold separately)
- Color: Black/Orange



ELITE™ 4717 DOUBLE BOW CASE

- Two full-size target bow compatible
- Inside dimensions 46"x16"
- Case-cube compatible double-fleece main compartments
- Double or single bow with opposite side clothing storage
- Dense EVA foam 360° exterior padding
- Re-positionable hook-and-loop bow anchor system
- Six interior and exterior accessory pockets
- Compatible with Easton arrow tote
- The best YKK® reverse coil double zipper pulls
- Shoulder strap included
- Available in Black/Grey/Orange



WORLD CUP™ 4517

- Accommodates one bow up to 45" in overall length
- Overall dimensions 45" long x 17" high
- 9 interior and exterior accessory pockets with dedicated compartments for stabilizers and arrow storage
- Case-cube compatible fleece main compartment
- Compatible with Easton arrow totes and Deluxe 33" and 36" arrow boxes
- Colors coordinate with Easton Deluxe Hip/Field quivers
- Dense 360 degree exterior/corner cam padding
- Re-positionable hook-and-loop bow anchor system
- Padded carry handle
- Shoulder strap included
- Colors: Flo-Green, Teal, Red, Black, and Blue



WORKHORSE™ 4118

- Accommodates one bow up to 41" in overall length
- Overall dimensions 41" long x 18" high
- Extra-wide 5" side depth to accommodate bow-mounted quivers; maximum inside storage
- Eight interior and exterior accessory pockets with dedicated arrow box compartments
- Case-cube compatible fleece main compartment
- Compatible with Easton arrow totes and Deluxe 33" and 36" arrow boxes
- Re-positionable hook-and-loop bow anchor system
- Dense 360° exterior padding
- Shoulder strap included
- Colors: Realtree® Edge, Teal/Grey, Olive/Grey, Lost®Camo XD, and Realtree® Xtra



BOW-GO™ 4118

- Accommodates one bow up to 41" in overall length
- Overall dimensions 41" long x 18" high
- Extra-wide 5" side depth to accommodate bow mounted quivers and maximum inside storage
- Four interior and exterior pockets with a dedicated arrow box compartment
- Compatible with Easton arrow totes and Deluxe 33" and 36" arrow boxes
- Colors: Realtree Edge®, Flo Green/Grey, Teal/Grey, Olive/Grey, Lost®Camo XD, and Realtree® Xtra



Lost Camo XD is a registered trademark of MCP IP LLC.
Realtree Edge and Realtree Xtra are trademarks of Jordan Outdoor Enterprises, Ltd.

DELUXE 4517 LADIES BOWCASE

- Seven generously sized interior and exterior pockets for complete storage of bows, arrows, accessories, and range gear
- Compatible with all Easton arrow tote and arrow case models
- Premium oversized #10 zippers with easy-grab pulls
- Cavernous 3.5" case-cube compatible fleece-lined padded interior (case cubes sold separately)
- Fits most bows –interior dimensions 44" x 16"
- Movable bow-anchoring straps for rock-solid bow security
- 360° padding for complete bow protection
- Colors: Realtree® Max-1/Lavender



Realtree Max1 is a trademark of Jordan Outdoor Enterprises, Ltd.



MICRO FLATLINE™ 3618

- Accommodates one bow up to 36" in overall length
- Overall dimensions 36" long x 18" high
- Dedicated outer snap-lock mesh accessory pocket
- Premium zippers with easy-grab molded pulls
- Multi-colored front printing design
- Colors: Flo Green/Blue, Pink/Yellow, Black/Grey, Grey/Red, Realtree Edge®, and Lost® Camo XD



Lost Camo XD is a registered trademark of MCP IP LLC.
Realtree Edge and Realtree Xtra are trademarks of Jordan Outdoor Enterprises, Ltd.



GENESIS™ 4014

- Custom tailored for the Genesis compound bow
- Rugged high-denier POLY construction with thick interior padding
- Premium zippers with easy-grab pulls
- Integrated Easton arrow-tote attachment straps
- Exterior mesh accessory pocket
- Colors: Red, Blue, Lost® Camo, Pink, and Black

LOSTCAMO

Lost Camo is a registered trademark of MCP IP LLC.



BOWSLICKER™

- Easy, secure carry with patented limb loop design
- Quick and quiet removal
- Keep cams and strings protected from brush
- Fits all compound bows, including parallel limbs, up to 36" axle-to-axle
- Color: Olive Green



Officially Licensed Product
Protected by US Patents:
9,038,878 & 9,310,158



CROSS-GO™ 4126 CROSSBOW CASE

- Modern designed crossbow case for maximum protection and gear storage needs
- Overall dimensions 41" long x 26" wide
- 360° padded soft sided case with 3 interior and exterior pockets with a dedicated arrow box compartment
- Compatible with Easton crossbow arrow case
- Colors: Olive/Grey



DELUXE 4126 CROSSBOW CASE

- Modern designed crossbow case for maximum protection and gear storage needs
- Compatible with the Easton Deluxe molded crossbow arrow case
- Case-cube compatible interior fleece hook and loop lining with adjustable bow attachment straps
- Hybrid hard/soft shell 360° perimeter protection for maximum contents protection
- Compatible with both standard and reverse limb crossbows
- Includes one corner case cube pocket
- Inside dimensions 41" x 26"
- Color: Black/Orange



CROSSBOW SLICKER™

- Fits crossbows from 15" to 30" axle-to-axle
- Rugged, weatherproof fabric
- Ultra-light–weighs less than 8 oz
- Color: Olive Green



Officially Licensed Product
Protected by US Patents:
9,038,878 & 9,310,158



PACKS

CLUB XT™ RECURVE BACKPACK

- Affordable recurve backpack with great features
- High-denier ballistic POLY fabric construction and fully adjustable shoulder harness
- Fits up to 25" recurve handles and long limbs
- Arrow tote included
- Colors: Teal, Flo-Green, Grey, Blue, Red, and Black



TEK TRAVELER™ BACKPACK

- Durable 1680D ballistic nylon
- Heavy-duty construction for daily use—extreme travel rated
- TSA-friendly laptop storage allows for easy security checks
- Fleece-lined key, glasses, and passport storage pockets
- Nine internal pockets
- Four huge exterior pockets
- Perfect for the traveler and student
- Headphone/charging and cord port
- Color: Grey



DELUXE RECURVE BACKPACK

- Convertible design for either backpack or shoulder carry (shoulder strap included)
- Internal storage compartments for sight, stabilizers, arrows, limbs, tools and other accessories
- External side mesh pockets for tripod or water bottle storage
- Front-side zipper pocket for clothing or other items
- Front-side privacy mesh ID slot for business cards
- High-denier woven fabric construction
- Fits up to 27" recurve handles and long limbs
- Arrow tote included
- Compatible with universal rain cover (sold separately)



UNIVERSAL RAIN COVER

- Compatible with Deluxe & Club XT recurve backpacks

BOWCASE ACCESSORIES

CASE CUBES™ BOW CASE ACCESSORY POCKETS

- Most efficient bow case accessory storage system ever created
- Durable 2.5" deep fabric construction with padded surrounds and clear mesh zippered closure
- Maximize your space by organizing gear in and around your bow inside your case
- Hook-and-loop attachment for customized fit and easy in-and out accessory storage



ROLLER BOWCASE TRAVEL COVERS

- Custom tailored for specific roller bowcase models
- A must for airline-travel bowcase protection
- Compression-molded semi-rigid bottom
- Premium #10 zippers for maximum strength
- Double wide buckled straps for extra security
- ID card slot
- Water resistant



BOW SLEEVE

- Durable 600D fleece-lined sleeve to protect bow from other gear
- Adjustable for up to 47" bows
- Fits inside all Easton bowcases



STABILIZER SYSTEM SLEEVE

- Durable 600D fleece-lined sleeve and pocket bag to store entire stabilizer system: main rods, side rods, V-bars, weights
- Length adjustable, protects other equipment in the same bow case
- Fits inside all bowcases



DELUXE MOLDED ARROW CASES

- Includes foam arrow dividers
- Holds arrows securely (with or without points)
- Four sizes:
 - Deluxe 36" (24-arrow) - outside dimensions (36" x 6.5" x 3")
 - Deluxe 33" (18-arrow) - outside dimensions (33" x 5" x 3")
 - Deluxe Crossbow (12-arrow) - outside dimensions (24" x 6.5" x 3")
 - Round Arrow Tote (12-arrow) - adjustable length



BEGINNER ARCHERY

Introductory line of easy-to-use beginner archery products for the aspiring archer.



VECTOR™ CARBON ARROWS

- Ideal for beginners looking for higher performance
- Durable wrapped carbon construction
- Nocks and 65-grain points installed—ready to shoot
- Shield-feather fletch
- Available in 1000 and 1400 spine sizes
- Available in 4-pack or 72-count case
- 28" length



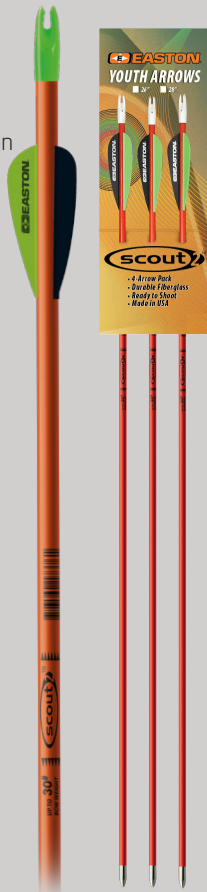
ARCHERY COMBO PACK

- High quality 600D fabric hip quiver
- Holds up to 12 arrows
- Integrated belt clip
- Three XX75® size 1816 high-strength 28" arrows
- Finger tab
- Polymer arm guard
- Fits right or left-handed archers
- Colors: Black and Pink



SCOUT 2™

- Durable fiberglass construction
- Over Nock – installed
- Sleeve Point – installed
- 26" or 28"



XX75™

- 7075 aerospace alloy
- Guaranteed straightness: ±.005
- Weight tolerance: ±2.5%
- Strength (psi): 90,000
- Size 1816
- Uses one-piece point and conventional nock
- Pre-cut to 28" with point installed



BEGINNER BOW

The Easton beginner bow is the perfect set up to get you started shooting archery. Smooth shooting polymer platform and easy-to-handle draw length-to-draw-weight ratio, the 52" bow is ideal for beginners seeking correct form development and accuracy.

- Ambidextrous for right or left-handed archers
- Integrated sight channel
- Custom Dacron string
- Ambidextrous arrow rest and sight pin included
- High-strength glass/polymer limbs and advanced polymer riser
- Ideal beginner draw weight range 10-20 pounds
- Max 26" draw
- Made in USA
- Includes: bow, quiver, three arrows, sight, finger protector, and armguard



BEGINNER FINGER TAB

- For right handed archers



Kit colors: Black, Pink, and Realtree® Xtra



Realtree Xtra is a trademark of Jordan Outdoor Enterprises, Ltd.

AIM WITH CONFIDENCE

46

ARROW SELECTION

USING THE TARGET ARROW SELECTION CHART

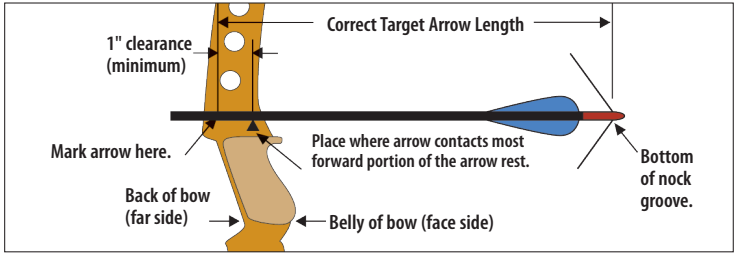
- Once you have determined your **Correct Target Arrow Length** and **Calculated** or **Actual Peak Bow Weight**, you are ready to select your correct shaft size:
 - Compound bows.** In the "Calculated Peak Bow Weight" column (left-hand side of the chart), select the column with the type of cam on your bow. Locate your **Calculated Peak Bow Weight** in that column.
 - Recurve bows and Modern Longbows.** In the "Recurve Bow Weight" column (right-hand side of the chart), select the column with the bow type. Next, locate your **Actual Peak Bow Weight** in that column.
- Move across that bow-weight row horizontally to the column indicating your Correct Arrow Length. Note the letter in the box where your **Calculated or Actual Peak Bow Weight** row and **Correct Target Arrow Length** column intersect. The "Shaft Size" box below the chart with the same letter contains your recommended shaft sizes. Select a shaft from the chart depending on the shaft material, shaft weight, and type of shooting you will be doing.

SELECTING THE CORRECT TARGET SHAFT SIZE

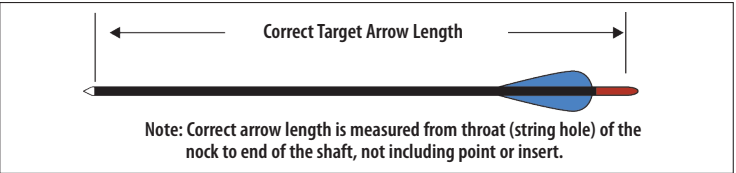
Our Target Shaft Selection Chart will help you find the perfect shaft match for your bow—quickly and easily. Advanced, interactive Spine Weight Comparison and Target Shaft Selection Charts are now available online at www.eastonarchery.com

1. Determining Correct Target Arrow Length

The **Correct Arrow Length** for bows (including bows with overdraws) is determined by drawing an extra-long arrow to full draw and having someone mark the arrow one inch in front of where the arrow contacts the most forward portion of the arrow rest.



Bow Draw Length. Draw length is measured at full draw from the bottom of the nock groove to the back (far side) of the bow. Actual arrow length and draw length are only the same if the end of the arrow shaft is even with the back of the bow (far side) at full draw.



2. Determining Actual Peak Bow Weight Compound Bows

Compound bows must be measured at the peak bow weight as the bow is being drawn and not while letting the bow down.

The suggested shaft sizes in the charts were determined using a "Standard" Setup which includes:

- Use of a release aid
- Compound bow with brace height greater than 6½"

If your setup differs from the "Standard" Setup, use the **Variables** (following) to make adjustments to determine the **Calculated Peak Bow Weight** so the correct arrow size can be selected on the chart.

Variables to the "Standard" Setup for Compound Bows

- Point weight over 100 grains—Add 3 lbs. for each 25 grains heavier than 100 grains.
- Bows with brace heights less than 6½"—Add 5 lbs.
- Finger release—Add 5 lbs.

Overdraw Compound Bows

If you are using an overdraw, make the variable calculations (if any), and then modify the **Calculated Peak Bow Weight** of your bow using the chart below.

Length of Overdraw

For 50#–70# Actual/Calculated Peak Bow Weight, add to bow weight —

1"	2"	3"	4"	5"
1#	3#	6#	9#	12#

3. DETERMINING ACTUAL PEAK BOW WEIGHT RECURVE AND MODERN LONGBOWS

Your local archery pro shop is the best place to determine the actual draw weight of your bow. **Actual Peak Bow Weight** for recurve bows and longbows should be measured at your draw length.

LOW POUNDAGE RECURVE BOW

Bow Weight—lbs. Finger Release

YOUR ARROW LENGTH

	21"	22"	23"	24"	25"	26"	27"
16–20 lbs. (7.3–9.1 kg)		Y1	Y1	Y2	Y3	Y4	
20–24 lbs. (9.1–10.9 kg)		Y1	Y1	Y2	Y3	Y4	Y5
24–28 lbs. (10.9–12.7 kg)	Y1	Y1	Y2	Y3	Y4	Y5	Y6
28–32 lbs. (12.7–14.5 kg)	Y1	Y2	Y3	Y4	Y5	Y6	Y7
32–36 lbs. (14.5–16.3 kg)	Y2	Y3	Y4	Y5	Y6	Y7	
36–40 lbs. (16.3–18.1 kg)	Y3	Y4	Y5	Y6	Y7		

Note: If your arrow shaft is longer than inch length shown, round-up to the next longer increment.

Size	Spine	Model	Weight Grs/Inch	Size	Spine	Model	Weight Grs/Inch
Group Y1				Group Y2			
2000	2.000	Carb1	3.4	1800	1.800	Carb1	3.6
2000	2.000	Apollo	3.4	1800	1.800	Apollo	3.6
2000	2.000	Inspire	3.4	1800	1.800	Inspire	3.6
1214	2.501	75	5.9	1413	2.036	75	5.9

Group Y3				Group Y4			
1600	1.600	Carb1	3.8	15020-	1.500	A/C/G	4.7
1600	1.600	Apollo	3.8	2-00	1.500	A/C/C	4.7
1600	1.600	Inspire	3.8	1400	1.400	Carb1	4.2
1416	1.684	75	7.2	1400	1.400	Apollo	4.2
				1400	1.400	Inspire	3.9
				1400	1.400	Vector	3.9
				1416	1.684	75	7.2

Group Y5				Group Y6			
1250	1.250	A/C/E	5.1	1250	1.250	A/C/E	5.1
1300	1.300	A/C/G	5.1	1150	1.150	A/C/G	5.5
3L-00	1.300	A/C/C	5.1	3-00	1.150	A/C/C	5.5
1200	1.200	Apollo	5.5	1150	1.200	Carb1	5.0
1200	1.200	Inspire	7.2	1200	1.200	Apollo	5.5
1400	1.400	Vector	3.9	1200	1.200	Inspire	7.2
1514	1.379	X7	6.8	1000	1.000	Vector	5.0
1516	1.403	75	7.3	1516	1.403	75	7.3
				1614	1.403	X7	7.7

Group Y7				KEY			
1000	1.000	A/C/E	5.7	A/C/E	Aluminum/Carbon/Extreme		
1100	1.100	A/C/G	5.1	X10	X10 Shafts (Aluminum/Carbon)		
1000	1.000	X10	5.3	A/C/G	A/C/G (Aluminum/Carbon)		
1000	1.000	A/C/G	5.7	A/C/C	Aluminum/Carbon/Composite		
3-00	1.150	A/C/C	5.5	Carb1	Carbon One N-FUSED® Carbon		
1000	1.000	Carb1	5.0	Apollo	Carbon Apollo		
1070	1.070	Apollo	5.9	Inspire	Carbon Inspire		
1000	1.000	Inspire	7.2	Vector	Carbon Vector		
1000	1.000	Vector	5.0	X7	X7 Eclipse (7178 alloy)		
1614	1.153	X7	7.7	75	XX75: Platinum Plus, Tribute, Jazz and Neos (7075 alloy)		
1616	1.079	75	8.4				

Note: To determine weight at your shaft length, multiply the grains-per-inch (gpi) by your actual shaft length not including point, insert, or UNI Bushing.

47

**COMPOUND BOW** – Release Aid Calculated Peak Bow Weight–lbs

Bow Rating - up to 275 FPS	Bow Rating - 276–300 FPS	Bow Rating - 301–320 FPS	Bow Rating - 321–340 FPS	23"	24"	25"	26"	27"	28"	29"	30"	31"	32"	Bow Weight—lbs. + Finger Release
29–35 lbs. (13.2–15.9 kg)				00	01	02	03	T1	T2	T3				21–27 lbs. (9.5–12.2 kg)
35–40 lbs. (15.9–18.1 kg)	29–35 lbs. (13.2–15.9 kg)			01	02	03	T1	T2	T3	T4	T5			27–32lbs. (12.2–14.5 kg)
40–45 lbs. (18.1–20.4 kg)	35–40 lbs. (15.9–18.1 kg)	29–35 lbs. (13.2–15.9 kg)		02	03	T1	T2	T3	T4	T5	T6	T7		32–36 lbs. (14.5–16.3 kg)
45–50 lbs. (20.4–22.7 kg)	40–45 lbs (18.1–20.4 kg)	35–40 lbs. (15.9–18.1 kg)		03	T1	T2	T3	T4	T5	T6	T7	T8	T9	36–40 lbs. (16.3–18.1 kg)
50–55 lbs. (22.7–24.9 kg)	45–50 lbs. (20.4–22.7 kg)	40–45 lbs. (18.1–20.4 kg)	35–40 lbs. (15.9–18.1 kg)	T1	T2	T3	T4	T5	T6	T7	T8	T9	T10	40–44 lbs (18.1–20.0 kg)
55–60 lbs (24.9–27.2 kg)	50–55 lbs. (22.7–24.9 kg)	45–50 lbs. (20.4–22.7 kg)	40–45 lbs. (18.1–20.4 kg)	T2	T3	T4	T5	T6	T7	T8	T9	T10	T11	44–48 lbs. (20.0–21.8 kg)
60–65 lbs. (27.2–29.5 kg)	55–60 lbs. (24.9–27.2 kg)	50–55 lbs. (22.7–24.9 kg)	45–50 lbs. (20.4–22.7 kg)	T3	T4	T5	T6	T7	T8	T9	T10	T11	T12	48–52 lbs (21.8–23.6 kg)
65–70 lbs (29.5–31.8 kg)	60–65 lbs. (27.2–29.5 kg)	55–60 lbs. (24.9–27.2 kg)	50–55 lbs. (22.7–24.9 kg)	T4	T5	T6	T7	T8	T9	T10	T11	T12	T13	53–57 lbs (24.0–25.9 kg)
70–76 lbs. (31.8–34.5 kg)	65–70 lbs. (29.5–31.8 kg)	60–65 lbs. (27.2–29.5 kg)	55–60 lbs. (24.9–27.2 kg)	T5	T6	T7	T8	T9	T10	T11	T12	T13	T13	58–62 lbs. (26.3–28.1 kg)
76–82 lbs (34.5–37.2 kg)	70–76 lbs. (31.8–34.5 kg)	65–70 lbs. (29.5–31.8 kg)	60–65 lbs. (27.2–29.5 kg)	T6	T7	T8	T9	T10	T11	T12	T13	T13	T14	63–67 lbs. (28.6–30.4 kg)
82–88 lbs. (37.2–39.9 kg)	76–82 lbs (34.5–37.2 kg)	70–76 lbs. (31.8–34.5 kg)	65–70 lbs. (29.5–31.8 kg)	T7	T8	T9	T10	T11	T12	T13	T13	T14		68–73 lbs. (30.8–33.1 kg)

For ATA Speed of 341–350 FPS: Start in 321–340 FPS column, drop down one row in chart:

Examples:

58lb-31in-345 FPS: drops down one row, still in Group T13

46lb–28in–345 FPS: drops down one row, shift from Group T8 to Group T9

LENGTH FOR TARGET • FIELD • 3D

RECURVE BOW

Size	Spine	Model	Weight Grs/inch	Size	Spine	Model	Weight Grs/inch
Group T1				Group T2			
*920-1000R	0.920-1.000	A/C/E	5.8	*780-850R	0.780-0.850	A/C/E	6.0
*900-1000R	0.900-1.000	X10	5.8	*750-830R	0.750-0.830	X10	6.4
*880-1000R	0.880-1.000	A/C/G	5.9	770	0.770	ProTour	6.0
2L-04	1.020	A/C/C	6.1	*810-880R	0.810-0.880	A/C/G	6.1
2-04	0.920	A/C/C	6.5	2-04	0.920	A/C/C	6.5
900	0.900	Carb1	5.3	810	0.810	Carb1	5.8
1070	1.070	Apollo	5.9	950	0.950	Apollo	6.2
1000	1.000	Inspire	7.2	900	0.900	Inspire	7.7
1000	1.000	Vector	5.0	1714	0.963	X7	8.1
1713	1.044	75	7.4	1716	0.880	75	9.0
1714	0.963	X7	8.1				
1616	1.079	75	8.4				

Group T7				Group T8			
*520-570R	0.520-0.570	A/C/E	6.7	*470-520R	0.470-0.520	A/C/E	6.8
*500-550R	0.500-0.550	X10	7.8	*450-500R	0.450-0.500	X10	8.1
520	0.520	ProTour	7.3	470	0.470	ProTour	7.6
*540-610R	0.540-0.610	A/C/G	7.7	*480-540R	0.480-0.540	A/C/G	8.4
3-18	0.560	A/C/C	7.8	3-28	0.500	A/C/C	8.1
3-28	0.500	A/C/C	8.1	3-39	0.440	A/C/C	8.6
530	0.530	FMJMatch	8.4	490	0.490	FMJMatch	8.9
550	0.550	Carb1	6.9	500	0.500	Carb1	7.4
560	0.560	Apollo	8.4	2212	0.505	X7	8.8
2212	0.505	X7	8.8	2213	0.460	X7, 75	9.9
2114	0.510	X7, 75	9.9	2114	0.510	X7, 75	9.9
2016	0.531	75	10.6	475	0.475	SDRIVE 23	6.4
475	0.475	SDRIVE 23	6.4	500	0.500	HSPEED	6.9
500	0.500	HSPEED	6.9	470	0.470	PRO	7.3
520	0.520	PRO	7.0				

Group T13				Group T14			
325R	0.325	X10	8.8	270	0.270	SDRIVE 27	9.0
3-71	0.300	A/C/C	9.9	2613	0.265	X7	11.5
290	0.290	SDRIVE 25	7.8	2712	0.260	X7	11.3
270	0.270	SDRIVE 27	9.0				
2512	0.321	X7	10.3				
2612	0.285	X7	10.7				
325	0.325	SDRIVE 23	7.4				
300	0.300	HSPEED	8.2				
300	0.300	PRO	9.6				

Every effort has been made to ensure the accuracy of this Product Guide. Graphics and images are for illustration purposes only. Due to on-going efforts to improve our products, Easton reserves the right to make changes without notice. 2019 products available for sale on or after December 1, 2018.

KEY

** When two sizes are listed together, the weight listed is for the first shaft*

A/C/C	Aluminum/Carbon/Composite
A/C/E	Aluminum/Carbon/Extreme
A/C/G	A/C/G (Aluminum/Carbon)
Apollo	Apollo
Carb1	Carbon One
FMJMatch	FMJ Match
HSpeed	Hyperspeed
Inspire	Inspire
Pro	ProComp
ProTour	X10 ProTour Shafts (Aluminum/Carbon)
SDRIVE 27	Super Drive 27
SDRIVE 25	Super Drive 25
SDRIVE 23	Super Drive 23
X7	X7 Eclipse (7178-T9 alloy)
X10	X10 Shafts (Aluminum/Carbon)
75	XX75: Platinum Plus, Tribute, Jazz and Neos (7075 alloy)

R The size recommendations for recurve bows are indicated with a letter “R” next to the size.

Size	Indicates suggested arrow size
Spine	Spine of arrow size shown (static) ATA standard
Model	Designates arrow model
Weight	Listed in grains per inch average for barrelled or tapered shaft

TARGET SHAFT MODELS

Aluminum/Carbon	Pg #	Materials/Construction	Inserts	Points	Nock System	Nock Type	Weight Tolerance ¹	Straightness ¹	Color/Finish	Sizes
X10 [®]	2	High-strength carbon fiber bonded to a precision 7075 alloy core tube –barreled shaft	N/A	X10 Ballistic Tungsten Break-off or X10 Stainless Steel Break-off	X10 Pin	Pin Nocks X10 Overnock	±0.5 grains	±.0015"	Polished Black Carbon	1000, 900, 830, 750, 700, 650, 600, 550, 500, 450, 410, 380, 350,325
X10 [®] PROTOUR™	2	High-strength carbon fiber bonded to a precision 7075 alloy core tube – single-taper shaft	N/A	X10 Ballistic Tungsten Break-off or X10 Stainless Steel Break-off	X10 or ProTour Pin	Pin Nocks	±0.5 grains	±.0015"	Polished Black Carbon	770, 720, 670, 620, 570, 520, 470, 420, 380, 340
A/C/E [®]	4	High-strength carbon fiber bonded to a precision 7075 alloy core tube –barreled shaft	A/C/E Insert	Screw-in, One-piece or A/C/E Stainless Steel Break-off	A/C/E Pin or Insert Nock	Pin Nocks or G Nock	±0.5 grains	±.0015"	Polished Black Carbon	(1250, 1100) ⁵ , 1000, 920, 850, 780, 720, 670, 620, 570, 520, 470, 430, 400, 370
PROCOMP™	4	High-strength carbon fiber bonded to a precision 7075 alloy core tube –barreled shaft	A/C/E Insert	Screw-in, One-piece or A/C/E Stainless Steel Break-off	A/C/E Pin or Insert Nock	Pin Nocks or G Nock	±0.5 grains	±.0015"	Polished Black Carbon	570, 520, 470, 420, 400, 380, 340, 300
A/C/C™	6	High-strength carbon fiber bonded to a precision 7075 alloy core tube	RPS Insert or Halfout Insert	One-piece Parabolic, NIBB, or RPS Point	UNI System	G Nock or Pin Nock	±0.5 grains	±.002"	Black, Micro-smooth Finish	2-00, 3L-00, 3-00, 2L-04, 2-04, 3X-04, 3L-04, 3-04, 3L-18, 3-18, 3-28, 3-39, 3-49, 3-60, 3-71
A/C/G™	6	High-strength carbon fiber bonded to a precision 7075 alloy core tube	A/C/E Insert	Screw-in, One-piece, A/C/E or A/C/G Stainless Steel Break-off	A/C/E & A/C/G Pin or Insert Nock	Pin Nocks or G Nock	±0.5 grain	±.002"	Polished Black Carbon	1500, 1300, 1150, 1000, 880, 810, 710, 660, 610, 540, 480, 430

FMJ MATCH™	14	High-strength carbon core bonded to a precision 7075 alloy jacket	A/C/E Insert or Deep Six Insert	Screw-in, One-piece, Carbon One Stainless Steel Break-off	G Nock or G Pin Nock	G Nock	±2 grains	±.001"	Polished Silver finish	530, 490, 450, 400, 375
------------	----	---	---------------------------------	---	----------------------	--------	-----------	--------	------------------------	-------------------------

Carbon	Pg #	Materials/Construction	Inserts	Points	Nock System	Nock Type	Weight Tolerance ¹	Straightness ¹	Color/Finish	Sizes
CARBON ONE™	8	UltraLite carbon fibers	A/C/E Insert	Carbon One Stainless Steel Break-off	A/C/E Pin, Carbon One Pin, or insert Nock	Pin Nock, Pin G Nock, G Nock	±1 grains	±.003"	Black, Micro-smooth Finish	2000, 1800,1600,1400,1150, 1000, 900, 810, 730, 660, 600, 550, 500, 450, 410
HYPERSPEED™ HYPERSPEED™ PRO	8	UltraLite carbon fibers	CB Insert	CB and RPS	NA	3D Super, Super, or S	±2 grains	±.003" ±.001"	Black, Smooth-matte Finish	500, 400, 340, 300
APOLLO™	10	UltraLite carbon fibers	A/C/E Insert	Apollo One-Piece	A/C/E Pin, Carbon One Pin, or insert Nock	Pin Nock, Pin G Nock, G Nock	±2 grains	±.005"	Black, Micro-smooth Finish	2000, 1800,1600,1400, 1200, 1070, 950, 840, 740, 670, 610, 560
SUPERDRIVE 23™	12	Multi-layer wrapped Carbon fiber	40 gr.	One-piece	Super UNI, G Nock Uni, or G Pin Nock	3D, Super, G Nock, or Pin Nock	±1 grains	±.003"	Black, Smooth-matte Finish	475, 375, 325
SUPERDRIVE 25™	12	Multi-layer wrapped Carbon fiber	50 gr.	One-piece	Super UNI, G Nock Uni, or G Pin Nock	3D, Super, G Nock, or Pin Nock	±1 grains	±.002"	Black, Smooth-matte Finish	290
SUPERDRIVE 27™ SUPERDRIVE 27™ PRO	12	Multi-layer wrapped Carbon fiber	NA	One-piece	Super UNI, G Nock Uni, or G Pin Nock	3D, Super, G Nock, or Pin Nock	NA	±.005" ±.002"	Black, Smooth-matte Finish	270
INSPIRE™	10	Small diameter pultruded carbon	NA	Zinc One-piece Point	NA	G Nock or X Nock	NA	NA	Black, Smooth-matte Finish	2000, 1800,1600,1400, 1200, 1000, 900, 750, 630, 570

Aluminum	Pg #	Aerospace Alloy	Strength ² (psi)	Inserts	Points	Nock System	Nock Type	Weight Tolerance ⁴	Straightness ¹	Color/Finish	Sizes
X ² 3™ X ² 7™	14	7178-T9	105,000	RPS Insert	NIBB, One-Piece Bullet or RPS Point	Super UNI System	3D Super, Super Nock or S Nock	±3/4%	+ .001"	Diamond Polished Silver Anodized	2712, 2312, 2314, 2315, 2318
ECLIPSE™	16	7178-T9	105,000	Not Available	NIBB or One-piece Bullet	UNI or Super UNI System	3D Super Super Nock S Nock or G Nock	±3/4%	±.001"	Hard-Anodized Polished Black	<i>1514, 1614, 1714, 1814, 1914, 2014, 2114, 2212, 2213, 2214, 2311, 2312, 2314, 2315, 2412, 2413, 2511, 2512, 2612, 2613, 2712</i>
XX75 PLATINUM [®] PLUS	20	7075-T9	96,000	RPS Insert	NIBB, One-piece Bullet, or RPS Point	UNI or Super UNI System	3D Super Super Nock or S Nock	±1%	±.002"	Hard-Anodized Platinum Grey	<i>1416, 1516, 1616, 1713, 1716, 1813, 1816, 1913, 1916, 2013, 2016, 2114, 2213, 2315</i>
JAZZ [®]	20	7075	90,000	RPS Insert 1716 & up	NIBB, One-piece Bullet, or RPS Point	Full-Diameter Taper Swage	Conventional or G Nock ⁴	±2%	±.005"	Hard-Anodized Purple/Silver	1214 ⁴ , 1413, 1416, 1516, 1616, 1716, 1816, 1916, 2016
TRIBUTE™	20	7075	90,000	RPS Insert 1716 & up	NIBB, One-Piece Bullet or RPS Point	Full-Diameter Taper Swag	Conventional or G Nock	±2%	±.005"	Hard-Anodized Black	1214 ⁴ , 1413, 1416, 1516 1616, 1716, 1816,1916, 2016
GENESIS™	16	7075	90,000	Not Available	One-piece Point	Full-Diameter	N Nock	±2.5 grains	±.005"	Hard-Anodized Bright Blue, Orange, Black	1820
NEOS™	20	7075	90,000	Not Available	One-piece Point	Full-Diameter Taper Swage	Conventional	±5%	±.008"	Hard-Anodized Gold	1618

¹ Guaranteed straight to more stringent standards than ATA/ASTM methods.

² Guaranteed to meet or exceed similar carbon-industry straightness specifications.

³ Tensile strength value may vary ±3%.

⁴ Grains-per-shafts in a dozen bundle.

⁵ Special order only.

⁶ 1214 size Jazz uses direct-fit G Nock.

Eclipse and Platinum Plus sizes in italics use UNI System and G Nock.

[®]/[™] Registered Trademark of Easton.

LIMITED WARRANTY

The Easton arrow shaft limited warranty covers any defects in material and/or workmanship for one year from the original owner's date of purchase. Arrow shafts that are defective will be replaced by your local Easton dealer with proof of purchase. Damage caused by impact from other arrows, impact with hard objects, improper cleaning or fletching, or from normal wear and tear is not covered by Easton's limited warranty. The limited warranty also does not cover damage resulting from your failure to follow Easton's written instructions. For written instructions and warranty details see www.eastonarchery.com.

ARCHERY EXPERTS

For more information on arrow preparation and assembly, visit: WWW.EASTONARCHERY.COM

ALUMINUM SHAFT COMPONENT SPECIFICATIONS

Size	Shaft Weight		Spine @ 28" Span	Stock Length ¹		Conventional Nock Size ⁴	UNI System ⁵		NIBB Point	One-piece Bullet Point	RPS ⁷ Insert Alum.	RPS ⁷ Point Size
	XX75 ¹	X7 ²		XX75 ¹	X7 ²		UNI Bushing ⁶	Super UNI Bushing ¹ ⁸				
	Grains per Inch			Deflection in Inches	Inches		Grains	Grains		Grains ³	Grains ⁸	Grains ⁸
1214	5.9	—	2.501	26½	—	—	—	—	—	45	—	—
1413	5.9	—	2.036	26	—	7/32	—	—	—	35	—	—
1416	7.2	—	1.684	27	—	7/32	2	—	46	52	—	—
1514	—	6.8	1.379	—	26½	—	5	—	61 ⁹	—	—	—
1516	7.3	—	1.403	27½	—	1/4	3	—	48	54	—	—
1614	—	7.7	1.153	—	28	—	5	—	51	—	—	—
1616	8.4	—	1.079	28½	—	1/4	5	—	56	63	—	—
1618	9.8	—	0.957	32½	—	1/4	—	—	—	50	—	—
1713	7.4	—	1.044	29	—	—	7	—	54	—	—	—
1714	—	8.1	0.963	—	29	—	7	—	56	—	—	—
1716	9.0	—	0.880	29	—	1/4	7	—	60	68	10	17/64
1813	7.9	—	0.874	30	—	1/4	8	—	56	—	14	9/32
1814	—	8.6	0.799	—	29½	—	8	—	60	—	—	—
1816	9.3	—	0.756	30	—	9/32	8	—	63	74	12	9/32
1820	12.2	—	0.592	29½	—	9/32	—	—	—	59	—	—
1913	8.3	—	0.733	31	—	9/32	9	—	64	—	18	5/16
1914	—	9.3	0.658	—	30½	—	9	—	64	—	—	—
1916	10.0	—	0.623	31	—	9/32	9	—	72	82	16	5/16
2013	9.0	—	0.610	32	—	—	—	5	68	—	21	5/16
2014	—	9.6	0.579	—	31½	—	(10)	5	71	—	—	—
2016	10.6	—	0.531	32	—	—	—	4	80	90	20	5/16
2114	9.9	9.9	0.510	31	32½	—	(11)	7	78	100	25	5/16
2212	—	8.8	0.505	—	32½	—	(13)	9	102 ⁹	100	31	11/32
2213	9.8	9.9	0.458	31	33½	—	(13)	9	88	100	30	11/32
2214	—	10.4	0.425	—	33	—	(13)	9	103 ⁹	100	—	—
2311	—	8.9	0.450	—	33	—	(15)	11	99 ⁹	100	37	11/32
2312	—	9.5	0.423	—	33	—	(15)	11	99 ⁹	100	37	11/32
2314	10.7	10.8	0.391	32	33½	—	(14)	10	—	100	34	11/32
2315	11.7	11.8	0.342	32	34	—	—	11	—	100	37	11/32
2318	13.7	—	0.300	34¼	—	—	—	11	—	200	—	—
2412	—	9.7	0.400	—	34	—	(17)	12	110	100	40	11/32
2413	—	10.5	0.365	—	34	—	(17)	12	110	100	40	11/32
2511	—	9.6	0.348	—	34	—	(20)	15	108 ⁹	100	52	11/32
2512	—	10.3	0.321	—	34½	—	(20)	15	108 ⁹	100	52	11/32
2612	—	10.7	0.285	—	34½	—	(22)	17	—	150	58	3/8
2613	—	11.5	0.265	—	34½	—	(22)	17	—	150	58	3/8
2712	—	11.3	0.260	—	34½	—	—	19	—	150/300	—	—

— Indicates not available

1 XX75 Tribute, Jazz, Platinum Plus, Genesis.

2 X7 Eclipse.

3 Length is approximate stock shaft length for each size.

4 Nock size for conventional swaged nock taper.

5 UNI—Universal Nock Installation System.

6 Parentheses indicate smaller G Nock UNI Bushing size is available as an optional accessory.

7 RPS = Replaceable Point System with 8-32 ATA Standard thread.

8 NIBB point grain weights are ±0.5 grain. All other components are ±1 grain.

9 This NIBB point will provide approximately an 8% F.O.C. All other NIBB points are approximately 7% F.O.C. F.O.C. is Front-of-Center balance position on the arrow shaft.

10 Super UNI Bushing accepts Super, S, 3D Super Nock, and Micro Super Nock.

⚠️ WARNING!: FOLLOW THESE INSTRUCTIONS TO AVOID PERSONAL INJURY. SEE WARNINGS AND USE AT WWW.BSAFE.WS OR 877-INFO-ETP (877-463-6387).

BOW INSPECTION

Before shooting any Easton arrow, it is critical to inspect your bow, including all components, to be sure that it is properly adjusted and in good working order. Easton arrows should only be used with bows that have a correct pull weight and draw length (see arrow selection chart at www.eastonarchery.com/shaft-selector/). Selecting the correct arrow and arrow length for the bow is the responsibility of the shooter, and failure to do so could result in personal injury and/or equipment damage.

WARNING! NEVER SHOOT AN ARROW WITH AN IMPROPERLY ADJUSTED OR DAMAGED BOW.

ARROW BREAKAGE

Any arrow can become damaged. A damaged arrow could break upon release and injure you or a bystander. Damage to an arrow shaft, or any of its components, may occur from improper transport, handling, or use; impacts with hard objects or other arrows; or, after being shot into a game animal. No list can cover all possible conditions and situations that may cause damage. Use good judgment and common sense, as well as follow the warnings and instructions below, to determine if your arrow has been damaged in any way.

WARNING! NEVER SHOOT A DAMAGED ARROW.

ARROW USE PRECAUTIONS

Before each shot (including the first shot of a new arrow) carefully inspect each arrow shaft and all arrow components to see that they have not been damaged. Before shooting, place the arrow between your thumb and fingers, and using your other hand to slowly rotate the shaft, run your fingertips along the entire arrow length, feeling and looking closely for nicks, cracks, splits, dents, or other marks that could indicate the shaft has been damaged (see arrow inspection video at www.eastonarchery.com/warning-use/). If your arrow is crested, inspect for damage on the crest surface and for any soft spots under the crest wrap. You may need to remove the cresting to make a thorough inspection. If damage is present, DISCARD THE ARROW.

WARNING! NEVER SHOOT A DAMAGED ARROW.

Before each shot, inspect the nock for damage and check that it is fully seated, and fits tightly in the shaft. Apply twisting pressure to see if the nock turns easily. If the nock has backed out of the arrow or turns easily, inspect for cracks in the arrow shaft. If there are cracks in the arrow shaft, or if the nock is loose, DISCARD THE ARROW. **WARNING! NEVER SHOOT A DAMAGED ARROW.** If the nock is damaged, REPLACE THE NOCK.

WARNING! NEVER SHOOT AN ARROW WITH A DAMAGED NOCK.

⚠️ WARNING: Cancer and Reproductive Harm—www.P65Warnings.ca.gov

Some of the products listed in this Product Guide may be subject to California Proposition 65 warnings requirements. See productpackaging or website for specific warning information. This Product Guide is intended for informational purposes only, not a solicitation for product sales.

ADDITIONAL TESTS FOR CARBON ARROWS

When checking carbon arrows, perform the following additional tests:

1. Grasp the shaft just above the point and below the nock, then flex the arrow in an arc (bending it away from you and others) with a deflection of 1 to 2 inches (2.5 to 5 cm), and feel and listen for cracking (*Figure 1*). Perform this test 4 to 6 times, rotating the arrow slightly between each flex until you have gone around the entire arrow. If you hear or feel cracking, the carbon has been damaged, DISCARD THE ARROW.

WARNING! NEVER SHOOT A DAMAGED ARROW.



2. While still holding the point and fletching ends of the arrow, twist the shaft in opposite directions (*Figure 2*). If the arrow “relaxes” or twists easily, the carbon has been damaged. DISCARD THE ARROW.

WARNING! NEVER SHOOT A DAMAGED ARROW.



A damaged arrow could break upon release and injure you or a bystander. If you have any reason to believe that an arrow has been damaged, DISCARD THE ARROW.

WARNING! NEVER SHOOT A DAMAGED ARROW.

CARBON ARROW CUTTING

Only cut a carbon arrow using a high-speed arrow cut-off saw. Using any other saw or cutting device may cause damage to the arrow. If an arrow has been cut without using a high-speed arrow cut-off saw, DISCARD THE ARROW. **WARNING! NEVER SHOOT A DAMAGED ARROW.**

To reduce your risk of serious injury or death, you must read and understand all safety warnings and instructions. If you do not understand these instructions, or cannot adequately perform the above tests, STOP and seek appropriate assistance before shooting any arrow.



EASTON TARGET

AIM WITH CONFIDENCE.