

# 2018 PRODUCT GUIDE



**WIAWIS**







world archery  
championships  
Mexico City 2017

# WIN&WIN MEDALISTS









# ABOUT US



**2016 Rio games,  
WIAWIS clean sweep all of gold medals!**

Since the 2000 Sydney Games, every games, gold medals have been with technology of WIAWIS.

What Champions are made of...

# WIN&WIN ESSENTIAL FOR VICTORY!

WIN&WIN has the passion and experience that has maintained KOREA's archery dominance since the 1980s.

Our staff aim for excellence with each WIN&WIN product they create.

We manufacture for a world of champions, where every archer in every nation strives for perfection.

A world of professionalism and power: born to win.

WIN&WIN Archery products are proven at World Championships and Olympic Games and continually set new world records. But we are not satisfied. In fact, we are only just getting started...

## WIAWIS #BORN TO WIN

### BRAND WITH PERSONALITY



The story of Win&Win Archery, is the story of a man who gambled everything to follow his passion and who listened to his heart and the people represent passion, endurance and professionalism.

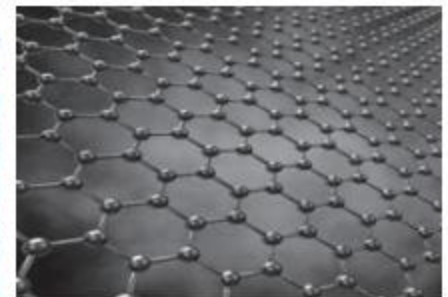
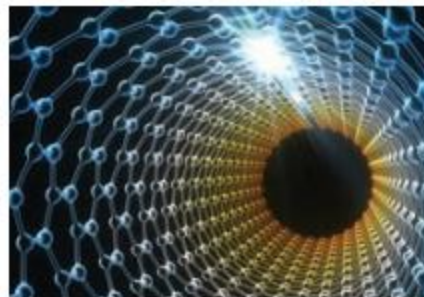
Mr. PARK Kyung Rae, CEO, is much more than just the head of a company. He knows archery like the back of his hand, not just because he spent several years as the South Korean national coach, but also because he actively participates in the design of the products.

"Win&Win Archery is a business that has a global influence and is widely popular, but that's not what's most important. Instead, what's important are the objectives we target, the dreams we want to realize and the way we approach getting to where we want to be."

Archery is his whole life. It brings him a lot of happiness, and provides him with a living, in a way. He hopes that it can do the same thing for anyone who takes part in it.

► We build, design, shoot and love archery, WIN&WIN.

### TECHNOLOGY, PERFORMANCE AND ESTHETICS



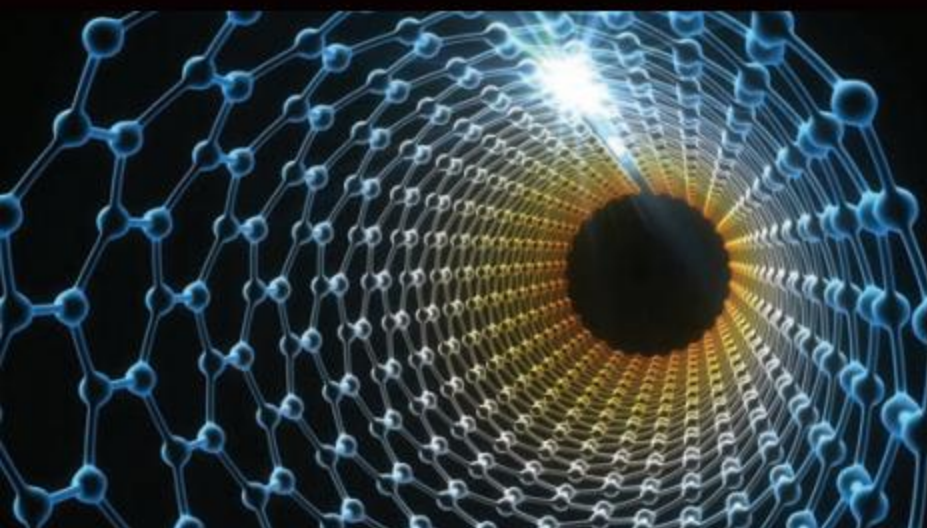
We are archery and carbon specialists. We are manufacturing the bows with our own unique technology that was created by using CNT(Carbon Nano Tube) and Graphene, in our own factories, by our own workman. We control the entire process from the start to the end. By handling the crucial points in the production process, we can ensure that the outcome is a perfect bow.

► The best bows, build with the best technology.



# TECHNOLOGY

*WIN&WIN equipment is created by the best and checked by the best.*



## **NANO TECHNOLOGY : ONLY FROM WIN&WIN**

The new WIAWIS Bows from WIN&WIN are the more stable, accurate and durable bows ever made. WIAWIS ONE Limbs are infused with molecularly bonded carbon nanotubes, the strongest modern material known to exist. Carbon nanotube resin has superior mechanical properties that produce consistent, accurate and secure limbs that effectively reduce shock.

They are exceptionally made, resistant to twisting and damage and feel extremely smooth to shoot. Developed by WIN&WIN's manufacturing experts, the advanced nanotechnology in the new WIAWIS Bow is the future of archery consistency and accuracy. It is the science of shooting feeling.



### **GRAPHENE NANO CARBON TECHNOLOGY**

Graphene is an atomic-scale honeycomb lattice made of carbon atoms. Graphene thickness of 0.2 nanometers is over 200 times stronger than the strongest steel and has improved shock absorption qualities over CNT(Carbon Nano Tube). The material properties and structure provide excellent tensile strength and approximately double the impact strength over present foam materials. The use of this material in Archery products has been solely developed by WIN&WIN.



### **WIN&WIN CARBON TECHNOLOGY**

High-tech engineering creates the best carbon material mixture for WIN&WIN bows, improving product quality and gaining athletes' confidence.



### **CARBON NANOTUBE TECHNOLOGY**

Carbon nanotube and graphite nanofiber are true 21st century materials. They can be made as small as /10,000th of a human hair, and have superior mechanical, chemical, physical and magnetic properties. Scientists believe nano-materials are the building blocks for the next generation of engineering.



### **WIN&WIN BOW TECHNOLOGY**

Archery specialists and composite material professionals work together at our high-tech facilities to develop each WIN&WIN product. With the right balance of expertise and passion, they deliver the science of archery every single day.



### **WEIGHT BALANCE SYSTEM**

The Weight Balance System is installed in the middle of the riser front end. It moves the center of gravity towards the front side, giving a more comfortable shooting feel and reducing unnecessary movement.



### **STRAIN BALANCE SYSTEM**

A balance system concentrated on the top of the limbs distributes strain energy to the overall limb. It helps to minimize unnecessary limb movement and keeps your shooting smooth and stable.



### **THE SCIENCE OF SHOOTING FEELING**

WIN&WIN products are designed with the archer in mind. Every innovative technology we use is part of the science of shooting feeling.



### **ABSORB VIBRATION SYSTEM**

WIN&WIN's revolutionary new stabilization system specifically addresses the issue of vibration travelling back into the bow. The new HMC PLUS stabiliser's unique design absorbs shock, improves dampening and controls torque during shooting.





### HIGH TECH FOAM CARBON

Traditional limbs are coated in glass fiber to protect the carbon but it reduces arrow speed because it is so heavy. WIN&WIN uses a 45-degree carbon system that effectively protects the limb, increases shooting stability and reinforces against twisting.



### 3Ss: SPEED, STABILITY & SMOOTHNESS

Limbs are evaluated by three measurements : arrow speed, stability and smoothness. We research, design and develop all our bows based on these key factors. This makes sure that archers love each and every WIN&WIN product.



### TORQUE FREE

Torque as the bow twists in an archer's grip when they release affects arrow flight directly, and will lessen accuracy. Reducing torque within the 0.03 seconds after an arrow is released dramatically improves consistency. WIN&WIN's TFS device absorbs shock and vibration on shooting, minimizes torque and increases accuracy.



### CROSS CARBON LIMB TECHNOLOGY

A carbon fabric exclusively produced by WIN&WIN reinforces limbs against twisting and raises their elastic modulus. That means the limbs are stiffer, more stable and produce higher arrow speeds.



### THE SCIENCE OF STRING FOLLOW-THROUGH

WIN&WIN engineers know that bow performance is measured on accuracy, stability, arrow speed and how smooth it feels at the moment it is shot. The last is the most important, and the string follow-through or string reaction on release is a major indicator of whether a bow feels good.



### TOWER EFFECT

WIN&WIN's barrelled bottom (thicker and wider) design creates an innovative tower effect. This absorbs shock during the shot and increases accuracy by removing unnecessary movement in the bow.



### EXTREME DURABILITY

WIN&WIN bows are made to a superior standard. During development each design must survive a 100,000-repetition durability test.



### IDEAL GRIP

The WIN&WIN ideal grip is moulded to accept the joint of each finger, making drawing and aiming easier and minimizing torque during shooting.



### CENTER SHOT ADJUSTMENT SYSTEM

With WIN&WIN's unique system, limb and riser alignment can be adjusted without unstringing the bow. We also designed a highly-specialized washer that prevents limb bolts from randomly coming loose.



### ALUMINIUM FORGING TECHNOLOGY

Our hot forging system enhances the useful properties of all WIN&WIN aluminum products, like tensile strength and hardness.



### T6 HEAT TREATMENT

T6 heat treatment raises the tensile strength and elastic modulus of WIN&WIN aluminum risers, making them resilient to intense shock.





2017 世界射箭锦标赛  
陆家嘴金融城上海站  
2017 World Archery World Cup  
-Lujiazui, Shanghai



# WIAWIS BOWS

We are born to win, are you?

## WINNING IN ACTION, WINNING IN SPIRIT

WIAWIS handles and limbs represent the pinnacle of nano carbon technology. WIN&WIN's carbon technology is excellent at absorbing shock and minimizing unnecessary movement to make shooting more accurate and stable. Better, faster, stronger!

## CARBON RISER

WIAWIS NANO TFT  
WIAWIS NANO MAX  
INNO CXT

## ALUMINUM RISER

WIAWIS ATF  
INNO AXT  
WINEX

## LIMBS

WIAWIS-NS  
WIAWIS ONE  
INNO EX POWER & PRIME  
WINEX





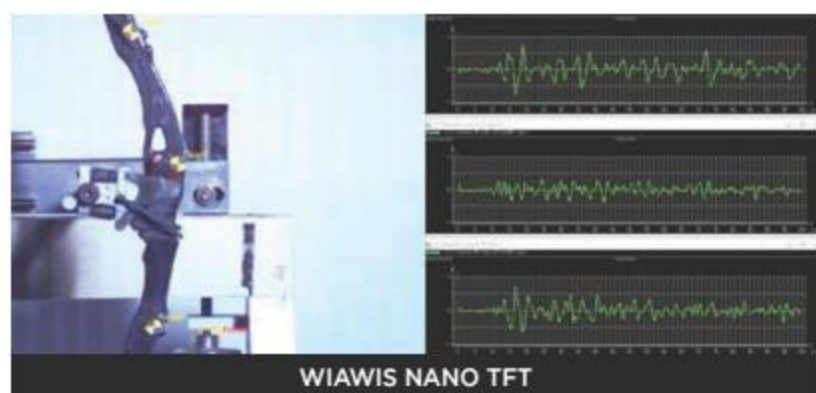
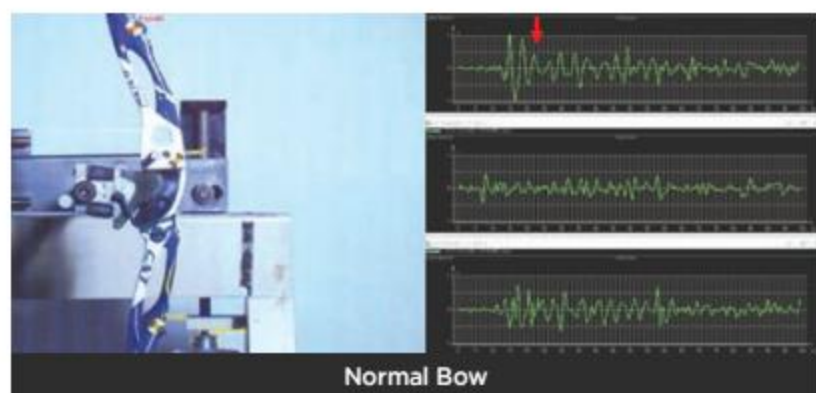
# WIAWIS NANO CARBON RISER

Better, faster, stronger!





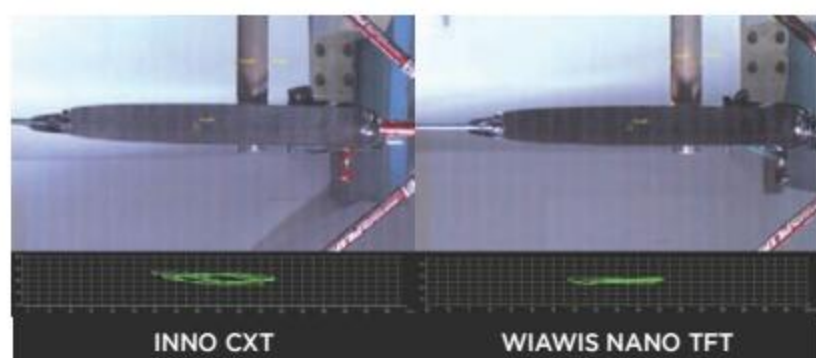
We analyzed the shock and vibration that a riser gives during shooting and improved the overall balance of the riser. This in turn maximizes the stability of the riser.



- Reviewing all the present bows, vibration mostly occurs at the sight window of a riser. It directly affects bow torque and balance of both of the limbs when shooting. 2017 WIAWIS TFT riser has improved overall balance so it stays balanced longer during/after shooting. This means torque is reduced when shooting which in turn directly affects increasing scores with a stable shooting feeling.

## Stability of a riser directly affects the limb movement.

You can see in the graph below that the string movement of the bow set up of a WIAWIS TFT riser is narrower and more stable than other product tests. We tested the bows at 42 pounds at 28" draw. The results were possible because we reinforced the sight window part of the riser. It minimizes the twist and torque of the riser at the moment of shooting as well as providing overall balance of the bow.



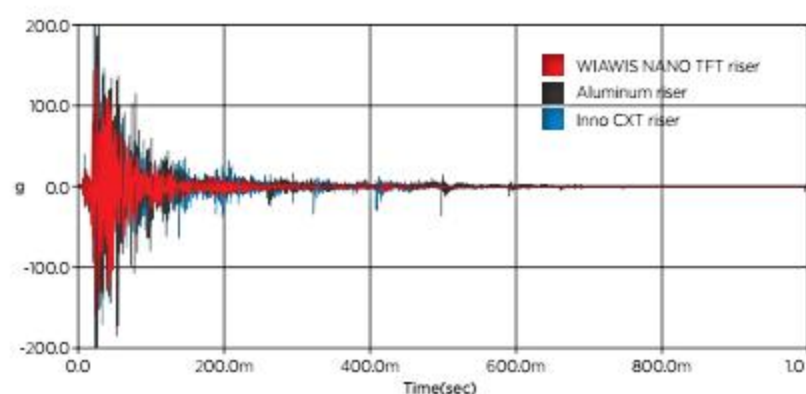
WIAWIS NANO TFT riser has an insert of H-Beam shaped metal which assists the reduction of torque.

We achieved rigidity at the area of the sight window and this maximized improved performance of the riser.

We analyzed momentum of the power being put through the riser and as a result introduced '**Torque Free System**' of H-Beam form to minimize torque at the moment of shooting.

## TORQUE FREE SYSTEM

1. Rigidity at the sight window is increased which reduces torque and vibration of the riser and also increases stability at the moment of shooting. This feature can be proven as shown below, which tests shooting shock and vibration of a bow set up with 42 pound limbs.



2. We balanced the riser in both the upper and lower parts to improve the shock absorption characteristics to give optimal performance.





# WIAWIS NANO TFT

25"



13mm



## ACCURACY. YEARS AHEAD.

The brand new WIAWIS NANO TFT riser takes a new step forward in Win&Win's nano carbon technology. The Nano TFT has a special H-BEAM shaped frame inside the carbon body which helps eliminate torque.

This increased rigidity through the sight window of the riser which also improving riser performance.

We analysed the forces the bow experiences during the shot and added the H-Beam 'Torque Free System' to minimize torque at the moment of shooting.

## TECHNICAL SPECIFICATIONS

SIZE - 25 inches      WEIGHT - 1320g      TYPE - RH / LH  
MATERIAL - Carbon Graphite / Nano Carbon



Photos courtesy of World Archery

## TECHNICAL FEATURES





## COLORS



CARBON BLACK



CARBON BLACK MATT



TITANIUM GRAY MATT



DARK RED



DARK BLUE



WHITE



CARBON BLACK  
NEON YELLOW



CARBON BLACK  
ORANGE



RED GLOSSY  
CARBON BLACK MATT



BULE GLOSSY  
CARBON BLACK MATT



YELLOW GLOSSY  
CARBON BLACK MATT



# WIAWIS NANO MAX

25"

27"



13mm

2

## NANO CARBON TECHNOLOGY FASTER, BETTER, STRONGER!

Nano carbon is the supreme material for stiffness. When mixed with carbon fibers, mechanical strength is increased approximately 30-40% compared to using normal carbon fiber - and with increased durability, too. When Nano carbon is applied to the riser, shock and vibration absorption enhances 150 to 200% more than when using carbon fibers only. This function reduces unnecessary shooting movement by over 30%, creating a clean shot with better arrow grouping.

### TECHNICAL SPECIFICATIONS

SIZE - 25 inches	WEIGHT - 1320g	TYPE - RH / LH
SIZE - 27 inches	WEIGHT - 1370g	TYPE - RH only
MATERIAL - Carbon Graphite / Nano Carbon		

### COLORS



BLACK  
GOLD



BLACK  
RED



BLACK  
ORANGE



BLACK  
NEON YELLOW



BLACK  
BLUE



BLACK  
PINK



WHITE  
PINK



WHITE  
GREEN

### TECHNICAL FEATURES





# INNO CXT

23"

25"

27"



12mm

4

## UNIQUE DESIGN OPTIMISING CARBON

Made to maximize the properties of carbon, the INNO CXT riser minimizes unnecessary limb movement when an arrow is released. This makes shooting far more stable and efficient by lessening the wasted energy lost as vibration. The INNO CXT is so pioneering it won a Red Dot Design Award. The problem of twisting and bending in carbon risers is a thing of the past. WIN&WIN engineers solved these issues with improvements to the molding process used to make the INNO CXT. It is possible to achieve practically perfect limbs and riser alignment with WIN&WIN bows. Do not settle for anything less than the perfect fit: choose the right WIN&WIN INNO CXT for you.

## TECHNICAL SPECIFICATIONS

SIZE - 23 inches	WEIGHT - 1130g (LIGHT : 1070g)	TYPE - RH
SIZE - 25 inches	WEIGHT - 1210g (LIGHT : 1150g)	TYPE - RH / LH
SIZE - 27 inches	WEIGHT - 1270g (LIGHT : 1210g)	TYPE - RH
MATERIAL - Carbon Graphite / Carbon		

## COLORS



BLACK



RED



BLUE



WHITE



BLACK+WHITE  
GOLD



DARK BLUE  
WHITE



SKY BLUE  
WHITE



PINK  
WHITE

**LIGHT VERSION - 1070g**

## TECHNICAL FEATURES





# WIAWIS ALUMINUM RISER

INNO-VATION

PROFESSIONAL  
POWER & PASSION



# WIAWIS ATF

25"



## STIFFNESS AGAINST TORSION THROUGH BIDIRECTIONAL 45-DEGREE FRAME STRUCTURE

The stylish WIAWIS ATF is perfectly balanced for ultimate accuracy and consistency. Especially, ATF riser's 45-degree frame structure prevents twisting and makes it stable to shoot with. Advanced material technology makes the side of sight window over 10% stronger than any other risers.

There is no lateral twisting in this 25" riser, making it feel completely comfortable to shoot with. Weighing 1300 grams, the WIAWIS ATF feels solid in the hand and the hard, strong metal it is made from inspires confidence.

This is a serious riser, primed and ready for the world stage.

## TECHNICAL SPECIFICATIONS

SIZE - 25 inches      WEIGHT - 1300g      TYPE - RH / LH  
MATERIAL - Forged Aluminum / Cut by Machine

## COLORS

### ANODIZED



BLACK

RED

BLUE

PINK

PURPLE

### PAINTED



WHITE

NEON YELLOW

BLACK NEON YELLOW

BLACK ORANGE

## TECHNICAL FEATURES





# INNO AXT

25"



13mm



## EXTREME TECHNOLOGY

Combining the award-winning design of the INNO CXT with the trusted traditional materials, the new INNO AXT is a premier competitive riser. Forged in aluminum and CNC machined, it significantly increases stability and accuracy in shooting. The INNO AXT has improved tensile strength by 30% over normal solid aluminum risers. The INNO AXT feels heavier in the hand, weighing 1330 grams. This new innovative riser is very stable to shoot due to the balanced weight. It is perfect for archers who prefer the confident feel of metal when they pick up their bow.

## TECHNICAL SPECIFICATIONS

SIZE - 25 inches      WEIGHT - 1330g      TYPE - RH / LH  
MATERIAL - Forged Aluminum / Cut by Machine

## COLORS

### ANODIZED



BLACK



RED



BLUE



GOLD

### ANODIZED



GREEN



PINK



WHITE



NEON YELLOW

### PAINTED

## TECHNICAL FEATURES





# WINEX

23"

25"



## THE IDEAL BOW FOR SERIOUS SHOOTING

The new WINEX riser wins fans from the moment they feel their hand nestle into its well-shaped grip. Made from strong forged aluminum, the 25" riser is stylishly designed and structured to prevent lateral twisting, making it stable and comfortable to shoot with. The handle in 25" weighs 1250 grams and comes painted.

The new WINEX is available in a 23" version as well, which makes 64", 66" and 68" bows with short, medium or long limbs. The new WINEX bow is developed for everybody from junior to senior or to have short or long draw lengths.

## TECHNICAL SPECIFICATIONS

SIZE - 23 inches	WEIGHT - 1190g	TYPE - RH
SIZE - 25 inches	WEIGHT - 1250g	TYPE - RH / LH
MATERIAL - Forged Aluminum / Cut by Machine		

## COLORS

### ANODIZED



BLACK



RED



BLUE

### PAINTED



WHITE



YELLOW



RED SILVER



BLUE SILVER

## TECHNICAL FEATURES





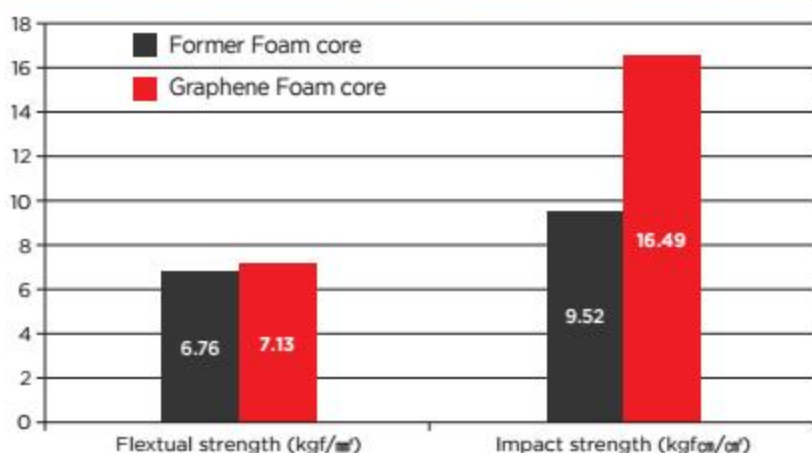
# WIAWIS NANO CARBON LIMB

Nano carbon technology. Reinvented.





## The fruit of Nano Technology - Graphene Foam core



- ▶ Graphene is an atomic-scale honeycomb lattice made of carbon atoms. Graphene thickness of 0.2 nanometers is over 200 times stronger than the strongest steel and has improved shock absorption qualities over CNT (Carbon Nano Tube). That's why we call it 'the fruit of Nano technology'. Graphene foam is solid open-cell foam made of single-layer sheets of graphene. The material properties and structure provide excellent tensile strength and approximately double the impact strength over present foam materials. The use of this material in Archery products has been solely developed by WIN&WIN.
- ▶ 2017 'WIAWIS NS' limbs made from graphene foam core are very light and strong, but also provide excellent shock and vibration absorption qualities. This offers a more stable and accurate feeling when shooting.

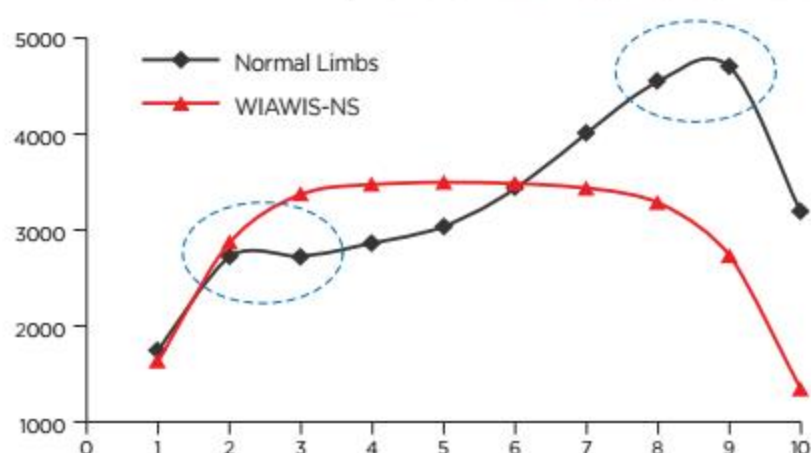
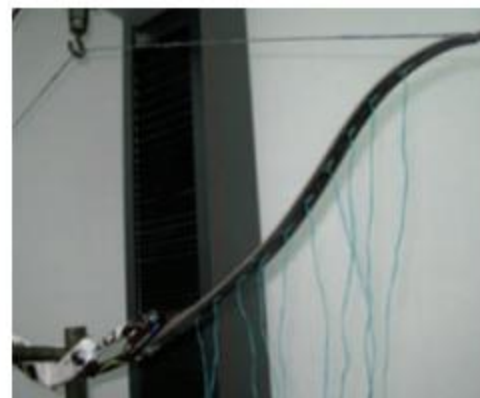
## Stable string movement

- ▶ String movement is an 'indicator of bow performance' when shooting.
- ▶ The narrower and shorter string movement is; the more superior bow performance will be.
- ▶ 2017 WIAWIS NS limbs having improved power and stability give shorter and narrower string movement than any other limbs. This affects how the efficiency and energy is transferred from the limbs through the riser to the arrows. It makes shooting more forgiving so that the archer can improve his/her performance consistency.



## Control of bending distribution of limbs

WIN&WIN has spent years researching the association between the stability and speed of a limb during its bending cycle. The 2017 'WIAWIS NS' limbs are born to have optimal bending distribution. They provide improvements in both stability and power over any other limb when shooting.

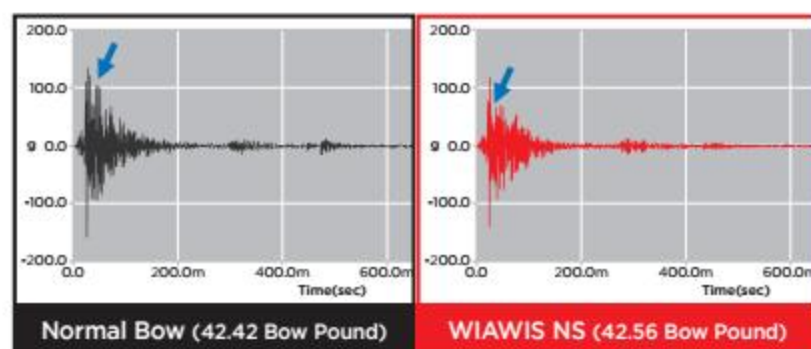


※ The area of the limb tip is the most stressed area of a limb. If the tip is not strong and stable it will give unstable shooting/grouping results, and could potentially cause a failure of the limb due to irregular bending.

At the moment of release the size of the movement of the limb is directly proportional to the torque of the bow. Smaller movement will allow reduced bow torque giving better results from the archer.

## Shock and vibration absorption of WIAWIS NS limbs

2017 WIAWIS NS limbs use graphene and give excellent shock and vibration absorption properties. It also improves the feeling of stability during the shot.





# WIAWIS NS

## GRAPHENE FOAM CORE



### BUILT FOR SPEED AND EXTREME ACCURACY INTRODUCING GRAPHENE FOAM CORE!

The new foam material uses graphene structure and has excellent tensile strength. It offers approximately double the impact strength over present foam materials. The use of this material in Archery products has been solely developed by WIN&WIN. 2017 WIAWIS NS limbs having improved power and stability give shorter and narrower string movement than any other limbs. This affects how the efficiency and energy is transferred from the limbs through the riser to the arrows. This makes shooting more forgiving so that the archer can improved his/her performance consistency.

### TECHNICAL SPECIFICATIONS

**SIZE** - 66, 68, 70 inches    **WEIGHT** - 28 to 48 lbs (2 lbs increment)  
**MATERIAL** - Nano Graphene Foam Core / High Modulus Carbon  
**FINISH** - One side matt & the other side glossy or Glossy



Photos courtesy of World Archery

### TECHNICAL FEATURES





# WIAWIS NS WOOD-FLAX CORE

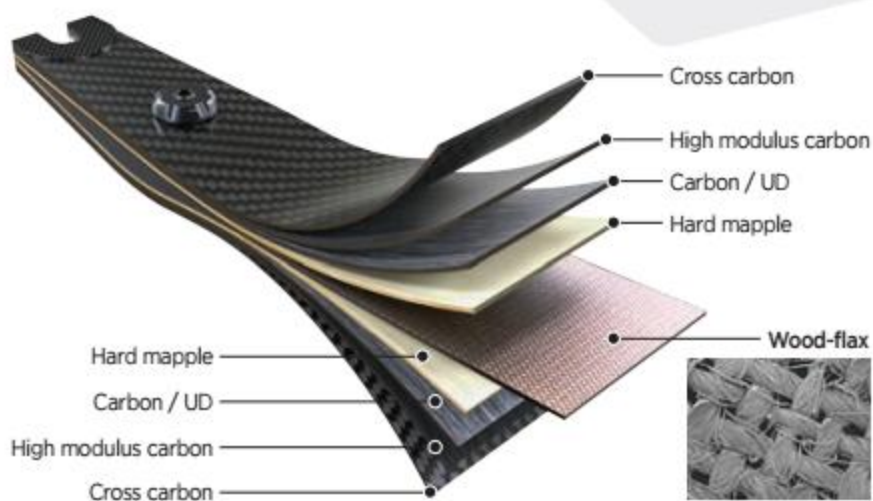
**NEW**



## THE MOST STABLE, ACCURACY AND POWERFUL SHOOTING!

The 2018 WIAWIS NS wood limbs feature an optimized flex profile which further enhances stability.

WIN & WIN's accumulated know-how and manufacturing techniques, combining Carbon Nano Tubes and unidirectional wood grain, create a limb optimized for clean and stable shooting.



## TECHNICAL SPECIFICATIONS

**SIZE** - 66, 68, 70 inches    **WEIGHT** - 28 to 48 lbs (2 lbs increment)

**MATERIAL** - Wood Core / High Modulus Carbon

**FINISH** - Glossy

## OTHERS VIEWS



## TECHNICAL FEATURES





# WIAWIS ONE



## FOAM CORE



Nano technology combined foam core limbs enables more powerful and smooth shooting. This characteristic increases durability, makes the limbs stable to shoot and enhances the shot feeling with fast arrow speed.

## TECHNICAL SPECIFICATIONS

**SIZE** - 66, 68, 70 inches    **WEIGHT** - 28 to 48 lbs (2 lbs increment)  
**MATERIAL** - Nano Foam Core / High Modulus Carbon / Flaxpreg  
**FINISH** - Glossy

## WOOD CORE



The timbers used in WIN&WIN's wood core range are selected by a rigorous quality specification and sorting process to create the perfect limb.

By combining wood with superior Nano carbon that has extremely high strength and vibration reduction, WIAWIS wood core limbs give a very stable feel at full draw and incredible power at the moment of release. They enable constant, powerful shooting with enhanced arrow grouping.

## TECHNICAL SPECIFICATIONS

**SIZE** - 66, 68, 70 inches    **WEIGHT** - 28 to 48 lbs (2 lbs increment)  
**MATERIAL** - Nano Wood Core / High Modulus Carbon / Flaxpreg  
**FINISH** - Glossy

## TECHNICAL FEATURES





# INNO EX POWER & PRIME



## EX POWER (FOAM CORE)

The carbon outer structure of INNO EX POWER limbs is created with N-composite carbon nano technology. This is an adjustment at the molecular level that significantly strengthens and enhances the stability of the carbon matrix. Inside the limb, the nanofoam core connects the high-modulus carbon at strategic points. It provides durability, makes the limbs smooth to shoot and enhances their overall feel. WIN&WIN is leading the way in recurve limb technology : superior speed, stability and shooting feeling make INNO EX POWER the best carbon limb available.

### TECHNICAL SPECIFICATIONS

**SIZE** - 66, 68, 70 inches    **WEIGHT** - 28 to 48 lbs (2 lbs increment)  
**MATERIAL** - Nano Foam Core / High Modulus Carbon  
**FINISH** - Glossy

## EX PRIME (WOOD CORE)

Utilising WIN&WIN's N-composite carbon nano technology, the structure of INNO EX PRIME limbs is significantly stronger, right down to its molecular carbon matrix. INNO EX PRIME contains a core made of meticulously selected wood. This makes the limb feel very stable at full draw and extremely powerful at the moment of release. Focus on your draw, aim and executing the perfect shot. Let INNO EX PRIME concentrate on delivering a consistent, stable arrow down the range.

### TECHNICAL SPECIFICATIONS

**SIZE** - 66, 68, 70 inches    **WEIGHT** - 28 to 48 lbs (2 lbs increment)  
**MATERIAL** - Wood Core / High Modulus Carbon  
**FINISH** - Glossy

### TECHNICAL FEATURES





# WINEX



## VIBRANT LOOK AND BRILLANT CONSTRUCTION

Royal cross carbon is the secret to the WINEX's smooth performance. WIN&WIN's 45-degree carbon system protects the surface of the limb and provides stability, while the barrelled bottom design increases accuracy by reducing unnecessary movement when the bow is shot.

WINEX limbs are available in draw weights from 28lbs to 48lbs, in 2lb increments.

## TECHNICAL SPECIFICATIONS

**SIZE** - 66, 68, 70 inches    **WEIGHT** - 28 to 48 lbs (2 lbs increment)

**MATERIAL** - Royal Cross Carbon

**FINISH** - Glossy

## OTHERS VIEWS



## TECHNICAL FEATURES





# WIAWIS OTHERS

We are born to win, are you?

## STATE OF THE ART

The WIAWIS accessories series is focused on giving you an incredibly comfortable shot with elegant design, too.

## STABILIZER

WIAWIS S-21  
WIAWIS ACS NANO  
HMC PLUS

## SIGHT

WS700  
WS600

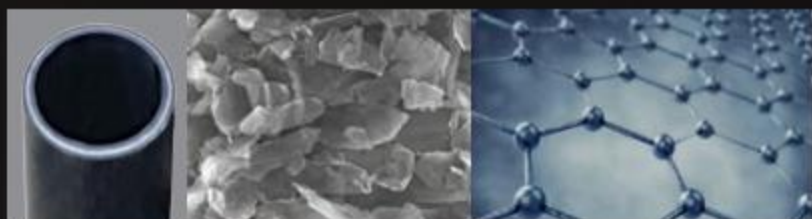
## OTHERS





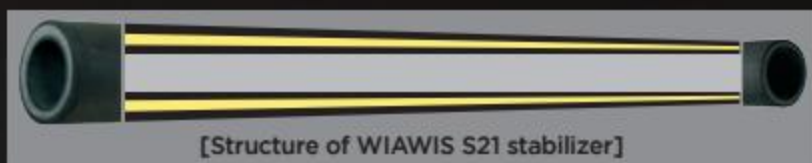
## Graphene foam core structure

The Synthetic foam core structure uses Graphene to increase the rigidity of the rod and absorbs shock and vibration more efficiently.

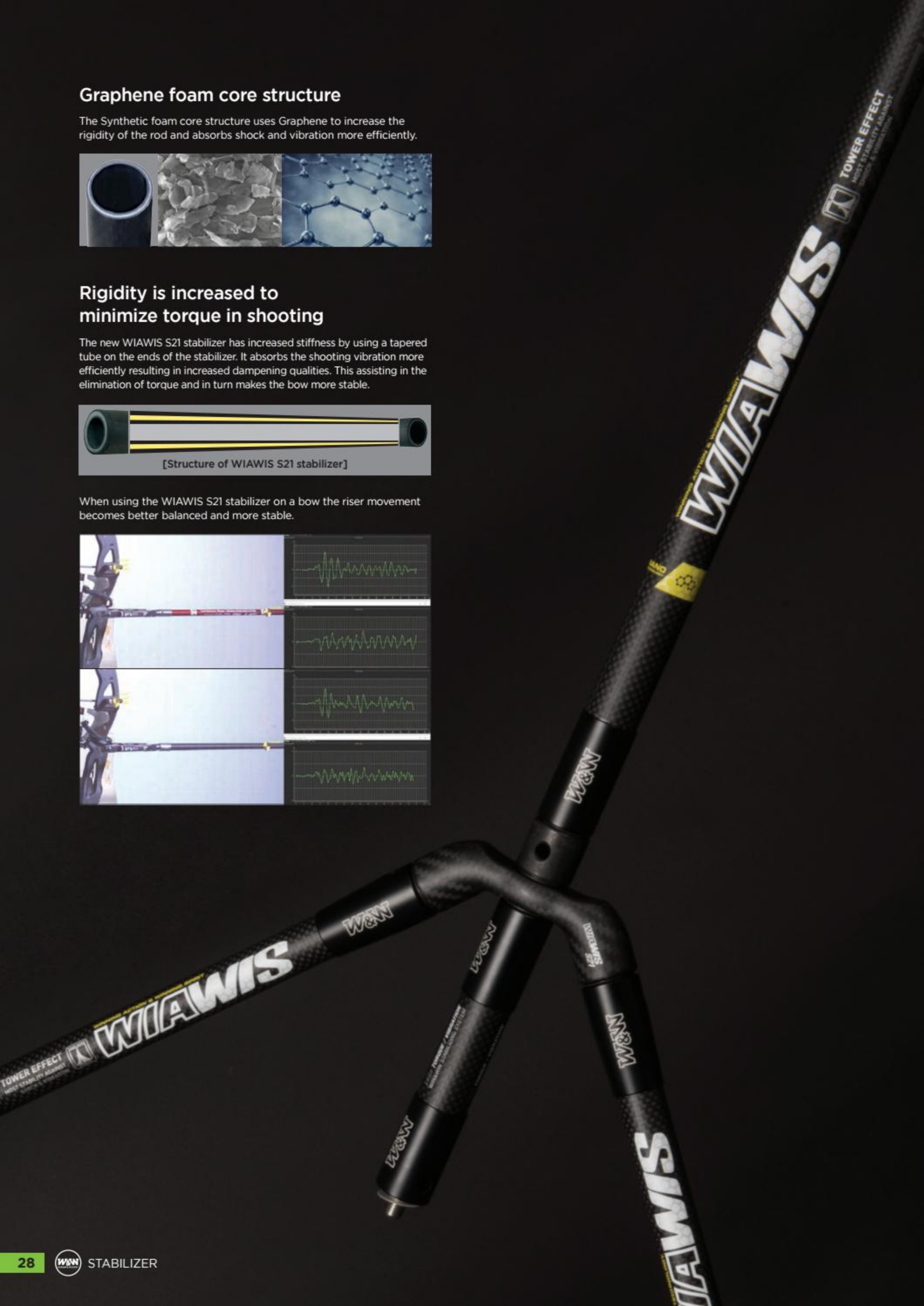
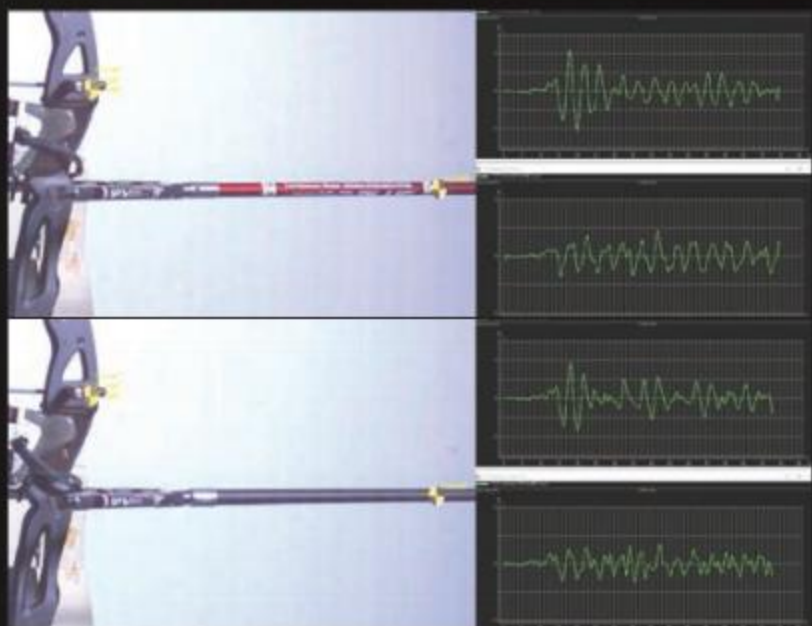


## Rigidity is increased to minimize torque in shooting

The new WIAWIS S21 stabilizer has increased stiffness by using a tapered tube on the ends of the stabilizer. It absorbs the shooting vibration more efficiently resulting in increased dampening qualities. This assisting in the elimination of torque and in turn makes the bow more stable.



When using the WIAWIS S21 stabilizer on a bow the riser movement becomes better balanced and more stable.





# WIAWIS S21



► 1 HEAD  
1 FLAT  
1 BOTTOM FLAT  
INCLUDED



1 HEAD  
1 BOTTOM FLAT  
INCLUDED



LONG

SHORT

EXTENDER

## TECHNICAL SPECIFICATIONS

LONG ROD LENGTH -	26 inches (256g)	28 inches (261g)
	30 inches (264g)	32 inches (268g)
SHORT ROD LENGTH -	10 inches (175g)	11 inches (180g)
	12 inches (185g)	
	<b>NEW</b> 14 inches (200g)	15 inches (205g)
EXTENDER LENGTH -	3 inches (54g)	4 inches (70g)
	5 inches (76g)	6 inches (82g)

## OTHERS VIEWS



## COLORS

	CARBON BLACK MATT
	CARBON BLACK
	RED
	BLUE
	YELLOW



# ACS NANO

1 ACS HEAD  
2 ACS FLAT  
INCLUDED



LONG



ACS WEIGHT  
(Flat & Head)

1 ACS HEAD  
1 ACS FLAT  
INCLUDED



SHORT



EXTENDER

## TECHNICAL SPECIFICATIONS

LONG ROD LENGTH -	26 inches (258.3g)	28 inches (265g)
	30 inches (266.7g)	32 inches (273.3g)
SHORT ROD LENGTH -	10 inches (136.7g)	11 inches (143.3g)
	12 inches (145g)	
EXTENDER LENGTH -	3 inches (50g)	4 inches (60g)
	5 inches (66.7g)	6 inches (73.3g)

## OTHERS VIEWS



## COLORS

	CARBON BLACK GOLD
	CARBON BLACK MATT
	RED
	BLUE
	WHITE



# HMC PLUS



► 1 HEAD  
2 FLAT  
INCLUDED



▲ 1 HEAD  
1 FLAT  
INCLUDED



LONG

SHORT

EXTENDER

## TECHNICAL SPECIFICATIONS

### LONG ROD LENGTH

26 inches (206.5g)    28 inches (225g)    30 inches (232.5g)

### SHORT ROD LENGTH

10 inches (141g)    11 inches (145g)    12 inches (156g)

### EXTENDER LENGTH

3 inches (70g)    4 inches (84g)    5 inches (87.5g)  
6 inches (90.5g)

## OTHERS VIEWS



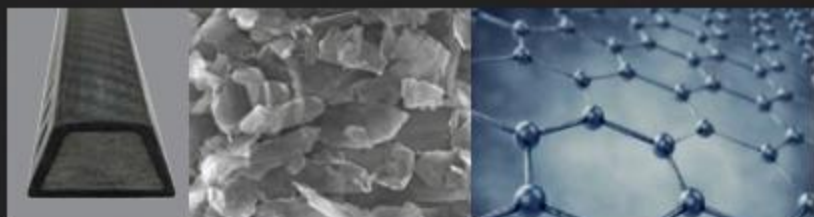
## COLORS





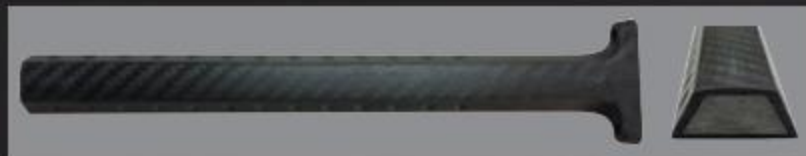
## The fruit of Nano Technology - Graphene Foam core

Graphene is an atomic-scale honeycomb lattice made of carbon atoms. Graphene thickness of 0.2 nanometers is over 200 times stronger than the strongest steel and has improved shock absorption qualities over CNT(Carbon Nano Tube) . That's why we call it 'the fruit of Nano technology'. Graphene foam is solid open-cell foam made of single-layer sheets of graphene. The material properties and structure provide excellent tensile strength and approximately double the impact strength over present foam materials. The use of this material in Archery products has been solely developed by WIN&WIN.



## Stronger and more stable structure

By integrating the Sight head, its movement against shock during shooting is reduced and shooting becomes more stable. This also improves durability characteristics.



## Outstanding shock absorption

Low specific gravity with high stiffness foam is used in the new sight. The sight features lighter, stiffer and improved shock/vibration absorption when shooting. In addition, high tensile Nano Carbon material is used on the sight which improves its stiffness.





# WS700



BLACK



RED



BLUE



SILVER



## GRAPHENE FOAM CORE

WS700 is WIN&WIN's brand new precision-machined competition sight, the evolution of the WS600 series. It has wheel tuners to accurately measure fine sight movements and a slide bar for convenient and smooth vertical adjustment. A unique bolt system securely locks the sight in place.

Graphene exclusive technology inside its carbon extension bar protects the WS700 from damaging vibration that travels through a bow when it is shot. It also keeps weight to a minimum and prevents torque during shooting.

## TECHNICAL SPECIFICATIONS

TYPE - RH / LH

WEIGHT - 207g

SIGHT EXTENSION WEIGHT - 50g

\* SIGHT EXTENSION SOLD SEPARATELY



# WS600



BLACK



RED



BLUE



SILVER



## NEVER COMPROMISE YOUR AIM

WS600 is WIN&WIN's precision-machined competition sight, trusted by some of the world's best archers. It has wheel tuners to accurately measure fine sight movements and a slide bar for convenient and smooth vertical adjustment. A unique bolt system securely locks the sight in place. Foam inside its carbon extension bar protects the WS600 from damaging vibration that travels through a bow when it is shot. It also keeps weight to a minimum and prevents torque during shooting.

Never compromise your aim. Choose the trustworthy, sturdy and secure WS600 sight from WIN&WIN.

## TECHNICAL SPECIFICATIONS

TYPE - RH / LH

WEIGHT - 219g





## WEIGHT / TILLER ADJUSTMENT BOLT

A TYPE	Aluminum	13mm×1.25	34g	WIAWIS NANO TFT, WIAWIS NANO MAX WIAWIS ATF, INNO AXT, WINEX-II, INNO AL1, WINACT-VT
B (TOW-TONE) TYPE	Stainless steel	13mm×1.25	42g	WIAWIS NANO TFT, WIAWIS NANO MAX WIAWIS ATF, INNO AXT, WINEX-II, INNO AL1, WINACT-VT
C (TOW-TONE) TYPE	Stainless steel	12mm×1.25	39g	INNO CXT, RCX-100, RAPIDO



## LIMB BOLT

WEIGHT - 2g (\*original stainless steel limb bolt weighs 6grams)



## WEIGHTS

WEIGHT - Head 40g / Flat 23g







## WK500 CUSHION PLUNGER

Well-engineered from high-quality components, the WK500 Cushion Plunger has a very smooth button action and micro click adjustments for fine bow tuning.

### ADJUSTABLE LENGTH

min 17.5mm - max 24.0mm (24mm pressure point)

min 24.0mm - max 29.0mm (29mm pressure point)

**WEIGHT** - 29.5g

**THREAD SIZE** - 5/16"-24

**COLORS** - Black, Red, Blue, Silver



## MIGHTY CUSHION PLUNGER

Our new cushion plunger is designed to enhance the concentration in a optimized size, and the aluminum material offers luxurious finish and gentle button action.

**MATERIAL** - Stainless

**WEIGHT** - 43g

**THREAD SIZE** - 5/16"-24

**COLORS** - Black, Silver



## ACS CLICKER

The sleekly-shaped plate with a metal cap gives you a crystal-clear "click" sound, with easier and more precise adjustment than before.

**THREE THREAD SIZES** - 6-32, 4-40 or M4

**COLORS** - Black, Red, Blue, Silver, Gold



## CARBON CLICKER

WIN&WIN's Carbon Clicker is light, precise and designed to fit snugly onto any riser. The matt black carbon blade gives a clear 'click' on every shot.

**THREE THREAD SIZES** - 6-32, 4-40 or M4





## WMR200 ARROW REST

WIN&WIN's recurve arrow rest uses a flipper-style arm to improve accuracy and ensure smooth shooting. It incorporates a bearing that tightens groups on the target while providing superb clearance. The arm is stiff and stable, minimizing the vertical movement that interferes with clean arrow flight.

**TYPE** - RH / LH

**COLORS** - Black, Silver



## ACS UPPER STABILIZER

ACS UPSTABI dampers are outstanding at absorbing vibration and increasing dampening in a stabilization system.

**LENGTH** - 110mm

**THREAD SIZE** - 5/16" x 24(M)

**WEIGHT** - 95g

**COLORS** - Black



## ACS DAMPER

After much research and development by the Win&Win team on the shape and length of vibration waves with stabilizers, Win&Win has released their WIAWIS ACS Damper. The ACS Damper is far superior in absorbing vibration and it has been designed for use with the 2015 WIAWIS ACS stabilizer. The WIAWIS ACS Damper will also work and enhance any other stabilizer.

**LENGTH** - 50mm

**THREAD SIZE** - 1/4" x 20(M)

**WEIGHT** - 33g

**COLORS** - Black



BW  
DAMPER



BW SHORT  
DAMPER

## BW & BW SHORT DAMPERS

BW dampers are made from an absorbent rubber material that nearly eliminates vibration during shooting and controls poor movement in equipment after the shot.

**LENGTH** - BWD : 40mm

**WEIGHT** - BWD : 45.5g

**THREAD SIZE** - 1/4" x 20(M)

BWD SHORT : 25mm

BWD SHORT : 32.5g

**COLORS** - Black





## WIAWIS CX-AD V-BAR

Adjustable Carbon V-bar which freely adjusts the short stabilizer up and down. It is made of carbon fiber which is lighter than any other v-bar. The vibration absorption is excellent and it makes an archer to enhance the concentration in shooting. Perfect fixation power is offered and it makes an archer to feel the stability.

**WEIGHT** - 115g    **COLORS** - Carbon Matt, Carbon Glossy



## WIAWIS S21 V-BAR

Though most shock that occurs when shooting is absorbed by a stabilizer and V-Bar, some vibration returns to the riser and makes consistent accuracy difficult.

WIN&WIN's new CX2 V-Bar is designed to absorb shock more efficiently, and increase shooting consistency by minimizing the vibration that returns back into the riser. looking for a sturdier stabilizer. Create your perfect stabilization system!

**THREE STRAIGHT ANGLES** - 35, 40, 45 degrees

**WEIGHT** - 112g    **COLORS** - Carbon Matt, Carbon Glossy



## WIAWIS CX2 V-BAR

Though most shock that occurs when shooting is absorbed by a stabilizer and V-Bar, some vibration returns to the riser and makes consistent accuracy difficult.

WIN&WIN's new CX2 V-Bar is designed to absorb shock more efficiently, and increase shooting consistency by minimizing the vibration that returns back into the riser. looking for a sturdier stabilizer. Create your perfect stabilization system!

**THREE STRAIGHT ANGLES** - 35, 40, 45 degrees

**WEIGHT** - 118g





## EZ FINGER TAB

The EZ finger tab is designed with an adjustable plate to perfectly fit your palm and allow for comfortable and natural hooking. The plate can be precisely adjusted to fit your hand by moving the plate in three planes :

up and down, front and back, and diagonally. The small size of the tab takes away obstructions. The tab is made from reliable, high-quality genuine Cordovan leather.

**TYPE** - RH / LH

**SIZE** - XSmall, Small, Medium, Large

※ CORDOVAN LEATHER SOLD SEPARATELY



## EZ R FINGER TAB

The round design of the EZ R Tab and unique sliding adjustments allow for comfortable thumb positioning and natural hooking.

The unique plate positioning brings dynamic control over the WIAWIS EZ R finger tab. It is possible to control factors such as hand shape, the force being transmitted through the hand, and sensation of the shot. The plate that supports the little finger can be micro-adjusted and is also detachable. The tab is made from reliable, high-quality genuine Cordovan leather.

**TYPE** - RH / LH

**SIZE** - XSmall, Small, Medium, Large

※ CORDOVAN LEATHER SOLD SEPARATELY



## 360 CORDOVAN FINGER TAB

Designed with archers' comfort in mind, the new 360 Cordovan Finger Tab is a high-quality and dependable genuine leather recurve finger tab.

**TYPE** - RH / LH

**SIZE** - Small, Medium, Large



## FINNO CHEST GUARD

Ergonomically designed to sit securely and consistently on the shoulder and around the chest shot after shot, FINNO Chest Guard was designed by archers for archers!

TYPE - RH / LH

SIZE - Small, Medium, Large



BLACK



RED



BLUE



WHITE



ORANGE



GREEN

## AT-100 ARM GUARD

AT-100 Arm Guard has a skeleton-like structure with all the unnecessary parts cut out, making it extremely light and comfortable to wear. Its smooth outer surface creates less friction when impacted by the string.



BLACK



RED



BLUE



WHITE



ORANGE



GREEN





## A-1 QUIVER

The total weight is dropped significantly and a cushioned belt provides a comfortable fit. Magnets at the bottom of the quiver make arrow carrying easy and multiple pockets allow you to carry all kinds of accessories.

**TYPE** - RH / LH

**BELT SIZE** - adjustable from 23 to 49 inches

**3 tubes**





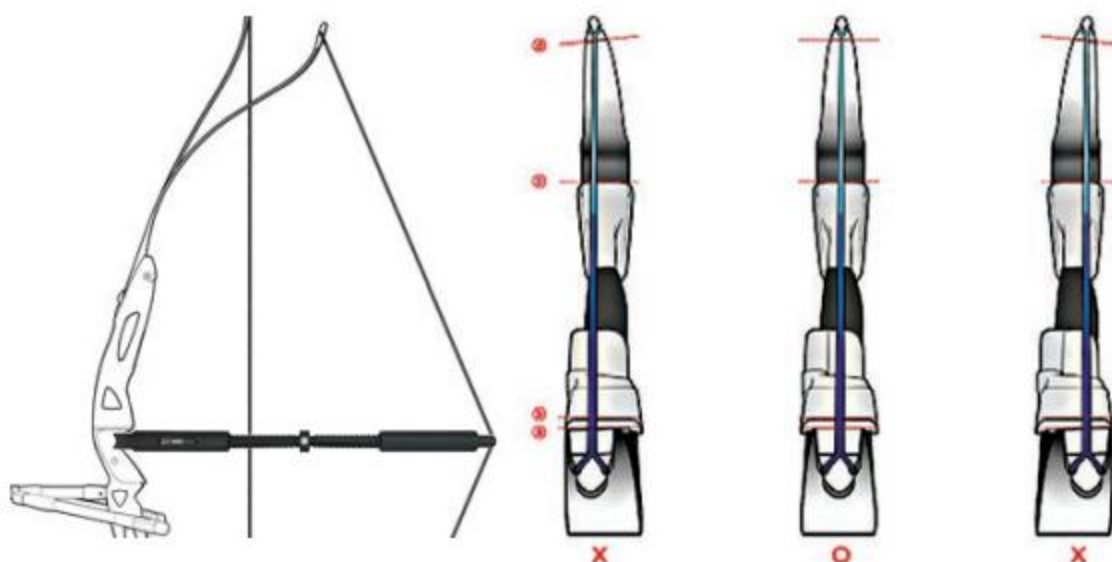


\* Caution :  
Do not draw over  
29" (marked red dot)  
or the TW-BRACE  
could collapse.

## TW-BRACE

The best way to check the alignment of the limbs along with your handle is when the bow is put at full draw. We have created the best tool to achieve it! The Wiawis TW-BRACE allows a safe setup of your bow.

Check the center-shot at set-up  
and full draw of the bow



## ABS BOW CASE

Protecting archery equipment is essential, and that is why the ABS Bowcase has such a solid outer shell. The smart design includes an extendable trolley handle, but does not sacrifice space for its impressive durability. Inside, there is plenty of room to store and organize a variety of archery gear.

**SIZE** - INNER - 830×330×205 (mm) / OUTER - 878×348×219 (mm)

**COLORS** - Black, Silver



Stable in any conditions with more firmly designed rest.



## TY MULTI BOW STAND

Suitable for indoor and outdoor use, the TY Multi Bow Stand is solidly built and a reliable bow support in all conditions. It is light yet strong and durable, its flip-lock legs fold up for easy storage and comes with two types of cradle head.

## ARROW PULLER



The solid gripping surface on WIN&WIN's arrow puller makes retrieving arrows from the target safe and easy. It fits comfortably in the hand, includes a keyring for attachment to a belt or pack. Shaped like a cat!

## GRIP MAKER



Some archers find a custom-fit grip improves their shooting. Make your own grip quickly and easily with a WIN&WIN grip maker resin kit. WIN&WIN Gripper resin is available in 300g and 25g quantities.

## SCAPOWER STRETCH BAND



Used as an exercise tool, the SCAPOWER Stretch Band will increase an archer's pulling weight, build up muscle and develop firmness in the shoulder. It can also be used to improve posture and technique. Daily practice is recommended : 10 minutes at a time with at least a 2 or 3 minute break. It does not take long to see improvement in shot placement, draw process and balance in the bow shoulder. Try it for yourself!

## BALL STRETCH BAND



Used as an exercise tool, WIAWIS BALL Stretch Band will increase archer's strength & flexibility. The archer's posture and technique will be improved with this.

**COLORS** - Black, Red, Blue, Yellow





# WIN&WIN APPAREL COLLECTION



**CAP 1**  
COLOR Beige, Navy



**CAP 6**  
COLOR Gray



**CAP 7**  
SIZE S(54cm), L(58cm)  
COLOR Navy



**FOLDING CAP**  
COLOR Blue



**FOLDING CAP**  
COLOR Black



**2017 OFFICIAL ARCHER T-SHIRT**  
COLOR Blue SIZE S, M, L, XL, XXL



**2016 OFFICIAL ARCHER SHIRT**  
COLOR Blue SIZE S, M, L, XL, XXL



**2016 OFFICIAL ARCHER SHIRT**  
COLOR Yellow SIZE S, M, L, XL, XXL



**2015 OFFICIAL ARCHER SHIRT**  
COLOR Red SIZE S, M, L, XL, XXL



**2015 OFFICIAL ARCHER SHIRT**  
COLOR Blue SIZE S, M, L, XL, XXL



Photos courtesy of World Archery



**UMBRELLA**



**TELESCOPIC UMBRELLA**



# WIN&WIN BOW SPECIFICATIONS

## RISER TECHNICAL SPECIFICATIONS

RISER	LENGTH	MASS WEIGHT	TYPE	MATERIAL
WIAWIS NANO TFT	25 inch	1320g	RH / LH	Carbon Graphite / Nano Carbon
WIAWIS NANO MAX	25 inch	1320g	RH / LH	Carbon Graphite / Nano Carbon
	27 inch	1370g	RH	Carbon Graphite / Nano Carbon
INNO CXT	23 inch	1130g	RH	Carbon Graphite / Carbon
	25 inch	1210g	RH / LH	Carbon Graphite / Carbon
	27 inch	1270g	RH	Carbon Graphite / Carbon
INNO CXT LIGHT	23 inch	1070g	RH	Carbon Graphite / Carbon
	25 inch	1150g	RH / LH	Carbon Graphite / Carbon
	27 inch	1210g	RH	Carbon Graphite / Carbon
WIAWIS ATF	25 inch	1300g	RH / LH	Forged Aluminum / Cut by Machine
INNO AXT	25 inch	1330g	RH / LH	Forged Aluminum / Cut by Machine
WINEX	23 inch	1190g	RH	Forged Aluminum / Cut by Machine
	25 inch	1250g	RH / LH	Forged Aluminum / Cut by Machine

## LIMBS TECHNICAL SPECIFICATIONS

LIMBS	LENGTH	POUNDAGE	TYPE	MATERIAL
WIAWIS NS (FOAM)	66", 68", 70"	28 - 48 lbs	Matt glossy / Glossy	Nano Graphene Foam Core / High Modulus Carbon
WIAWIS NS (WOOD)	66", 68", 70"	28 - 48 lbs	Glossy	Wood Core / High Modulus Carbon
WIAWIS ONE (FOAM)	66", 68", 70"	28 - 48 lbs	Glossy	Nano Foam Core / High Modulus Carbon / Flaxpreg
WIAWIS ONE (WOOD)	66", 68", 70"	28 - 48 lbs	Glossy	Wood Core / High Modulus Carbon / Flaxpreg
INNO EX POWER	66", 68", 70"	28 - 48 lbs	Glossy	Nano Foam Core / High Modulus Carbon
INNO EX PRIME	66", 68", 70"	28 - 48 lbs	Glossy	Wood Core / High Modulus Carbon
WINEX	66", 68", 70"	28 - 48 lbs	Glossy	Royal Cross Carbon

## GRIP COMPATIBILITY

RISER	1 STANDARD PLASTIC	1 STANDARD WOOD	2 STANDARD PLASTIC	2 STANDARD WOOD	3 HIGH PLASTIC	3 HIGH WOOD	4 STANDARD PLASTIC	5 STANDARD PLASTIC	6 HIGH PLASTIC	6 HIGH WOOD	CTK I WOOD	CTK II WOOD	CTK III WOOD
WIAWIS NANO TFT	●	●					●	●	●	●		●	●
WIAWIS NANO MAX			●	●	●	●					●		
INNO CXT, CXT LIGHT	●	●					●	●	●	●		●	●
WIAWIS ATF	●	●					●	●	●	●		●	●
INNO AXT	●	●					●	●	●	●		●	●
WINEX	●	●					●	●	●	●		●	●
WINACT-VT	●	●					●	●	●	●		●	●

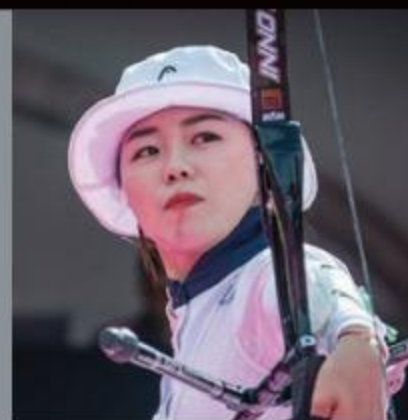
※ Grip in red dot is the standard grip to be set in the factory.

※ Wooded grip in same group from 1 to 6 is marked 'high' on the basis of standard grip at the factory.



# WIN&WIN ATHLETES

WE ARE BORN TO WIN. ARE YOU?



CHANG HYEJIN / KOREA



KANG CHAE YOUNG / KOREA



NAOMI FOLKARD / GREAT BRITAIN



RYAN TYACK / AUSTRALIA



ALICIA MARIN / SPAIN



MATIJA MIHALIC / CROATIA



MONICA GALISTEO / SPAIN



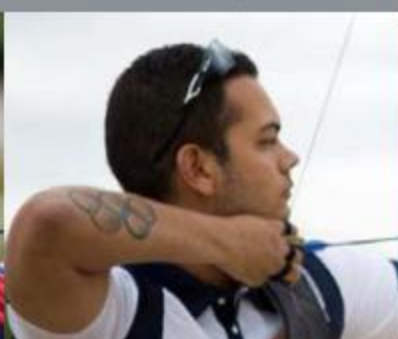
PENG CHIA-MAO / CHINESE TAIPEI



BERNARDO OLIVEIRA / BRAZIL



KHATUNA LORIG / USA



DANIEL FELIPE PINEDA / COLOMBIA



WU JIAXIN / CHINA



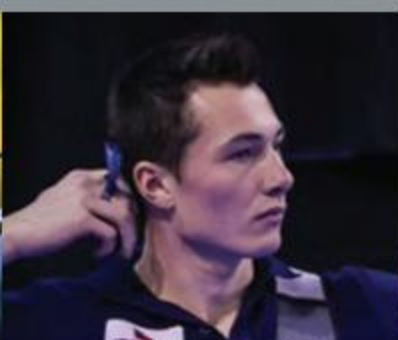
WANG DAPENG / CHINA



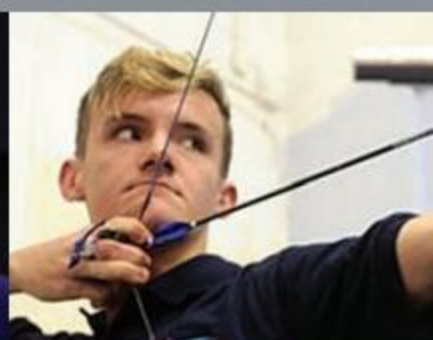
DANIEL REZENDE XAVIER / BRAZIL



VALENTIN RIPAUX / FRANCE



THOMAS KOENIG / FRANCE



ALEX WISE / GREAT BRITAIN



ANNA MISCIONE / USA



KIKUCHI HIDEKI / JAPAN



ZAHRA NEMATI / IRAN



CLÉMENCE TELLIER / FRANCE



ONIYAMA NAOYA / JAPAN



SUGIO TOMOKI / JAPAN



CONNER SORLEY / CANADA



THOMAS STANWOOD / USA



NATHAN YAMAGUCHI / USA



JUUSO HUHTALA / FINLAND



JUAN RODRIGUEZ / SPAIN



GUILLE AGUILAR GIMPLE / CHILE



AMEDEO TONELLI / ITALY



FLORIAN BILLOUE / FRANCE



CAO HUI / CHINA





KU BON CHAN / KOREA



CHOI MI SUN / KOREA



WEI CHUN-HENG / CHINESE TAIPEI



AIDA ROMAN / MEXICO



MIGUEL ALVARINO GARCIA / SPAIN



ASHE MORGAN / GREAT BRITAIN



ALEXANDRA MIRCA / MOLDOVA



JAKE KAMINSKI / USA



KAORI KAWANAKA / JAPAN



MARCUS D'ALMEIDA / BRAZIL



SULTAN DUZELBAYEV / KAZAKHSTAN



FLORENT MULOT / FRANCE



MATHIEU JIMENEZ / FRANCE



DAN OLARU / MOLDOVA



CLAUDIA MANDIA / ITALY



ANDRES PILA / COLOMBIA



QI YUHONG / CHINA



SANZHAR MUSSAYEV / KAZAKHSTAN



LAURA RUGGIERI / FRANCE



ANTTI TEKONIEMI / FINLAND



PIT KLEIN / LUXEMBURG



JAYANTA TALUKDAR / INDIA



FLORIAN FABER / SWITZERLAND



VIRGINIE CHÉNIER / CANADA



TAKAHARU FURUKAWA / JAPAN



OCÉANE GUY / FRANCE



CUI YUANYUAN / CHINA



FEDERICO MUSOLESI / ITALY



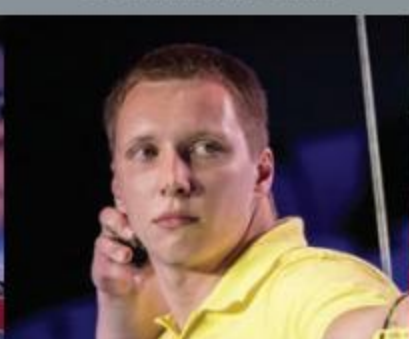
DANIEL BETANCUR MARTINEZ / COLOMBIA



JEFF HENCKELS / LUXEMBURG



ONUR TEZEL / TURKEY



HEORHIY IVANYTSKYI / UKRAINE



SUGIMOTO TOMOMI / JAPAN



OLGA SENYUK / UKRAINE



GASPER STRAJHAR / SLOVENIA





WIN&WIN KOREA

19, Donghanggongdan-gil, Yangseong-myeon, Anseong-si, Gyeonggi-do, 17502, KOREA  
T +82 31 671 0894 F +82 31 671 0895 E win@win-archery.com