

**W&W**

What champions are made of

# Professionalism & Strength

Essentials for victory shooting power cutting through the wind created by win&win technology new epoch of upgraded accuracy and stability! Feel the speed and power of it!

**WIN&WIN** CATALOG 2009

[www.win-archery.com](http://www.win-archery.com)

## They got gold medals with Win&Win bow at World Championship

### 2008

Beijing Olympics Viktor RUBAN (men)  
World Cup Final Justyna MOSPINEK(women)  
World Cup 4th Series Viktor RUBAN (men)  
World Cup 2nd Series Romain GIRONVILLE (men)

### 2007

10th European Annual Indoor Event in Nîmes, France Unruh, Lisa(women) Santana Plaza Ignacio(Junior men)  
World Cup 1st Series & Korean Cup Wang, Cheng Ping (men)  
World Cup 2nd Series Michele Frangilli (men) Lee, Hye Yeon (women)  
World Cup 3rd Series Kim Yeon Chul(men)  
World Cup 4th Series Tsyremptilov Baljinnima (men) Banerjee Dola(women)  
15th Asian Championships Wang, Cheng Ping  
IPC World Championships Lee, Hong Gul(men W2)  
World Cup Final Tsyremptilov Baljinnima (men) Banerjee Dola(women)

### 2006

9th European Annual Indoor Event in Nîmes, France Arnedo TONELLI (MEN) , Pascale LEBECQUE (JUNIOR WOMEN)  
20th Field Archery World Championships Michele FRANGILLI (MEN)  
9th Junior Archery World Outdoor Championships Romain GIRONVILLE (MEN)  
6th World University Archery Championships LEE, Jong-young (MEN) , TAGUMA Kiroko (WOMEN)

### 2005

43rd Outdoor Target Archery World Championships CHUNG Jae-hun (MEN)  
5th World University Archery Championships in Izmir KJOO, Chen-wei (MEN)  
IPC World Archery Championships LEE, Hong-gu (W2 CLASS MEN) , LEE, Hwa-sook (STANDING CLASS WOMEN)  
European Junior Championships, Denmark Elena TONETTA (WOMEN)

4th European Junior Field Championships, Slovenia Carla FRANGILLI (WOMEN)  
3rd European Grand Prix Tournament Elena TONETTA (WOMEN)

### 2004

8th World Junior Archery Championships, England JO, Eun-ji (WOMEN)  
5th World University Archery Championships, Madrid LEE, Hyung-jung (WOMEN) , KYE, Dong-hyun (MEN)

### 2003

42nd World Championships YUN, Mi-jin (WOMEN) , Michele FRANGILLI (MEN)  
4th World University Archery Championships KIM, Mun-jung (WOMEN) , Jeff HENCKELS (MEN)

### 2002

Field Archery World Championships Michele FRANGILLI (MEN)

### 2000

Sydney Olympics YUN, Mi-jin (WOMEN)  
Junior World Championships CHOI, Nam-uk (WOMEN) , CHUNG, Soo-young (MEN)

### 1999

World Championships LEE, Eun-kyung (WOMEN) , HONG, Sung-chil (MEN)

### 1998

Junior World Championships KIM, Nam-soon (WOMEN) , OH, Jin-hyuk (MEN)

## THEY SET NEW WORLD RECORDS WITH WIN&WIN BOW WOMEN

2001 - LEE, Hyun-Jung 360pts (30M) LEE, Hyun-Jung 348pts (70M)  
2000 - JUNG, Chang-Sook 1384pts (340/ 344/ 344/ 356) Lutz Wiese 328pts (Cardet 50M)  
CHOI, Nam-Ok 1382pts (345/ 343/ 340/ 354) CHUNG, Soo-young 336pts (Junior 36 arrows)  
1999 - JUNG, Chang-sook 1380pts (343/ 343/ 341/ 354)

## MEN

2006 - CHUNG, Jaehun 348 pts (70M)  
2002 - GHE, Dong-Hyun 360pts  
2001 - OH, Kyo-Moon 1379pts (332/ 343/ 344/ 360)

What champions are made of



# Professionalism and Strength

GOLD medal at the 2008 Beijing

What Champions are made of  
Professionalism and Strength **W&W**

*What a Great Win!*



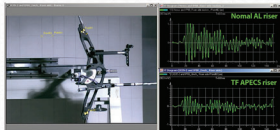
**Sold American: Viktor RUBAN**  
2008 Beijing Olympic Men's Individual

# INSPIRATION! INGENUITY! INNOVATION! 「TF APECS」

The history of riser development has been wood, magnesium and aluminum in order. Magnesium was considered a very important material because it is light, strong and absorbs shock and vibration extraordinarily. However, it could not stand against new developments such as carbon arrows, therefore strings and limbs broke easily. Aluminum came on as the alternative but it couldn't absorb shock and vibration enough. It was necessary to add too many dampeners or make it too heavy to reduce instability in shooting.

**The carbon riser improves all these problems and maximizes shooting stability.**

## ■ Role of a Carbon Riser vs an Aluminum Riser



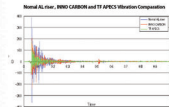
A carbon riser is one of the most accurate and stable risers available today. Carbon fiber is excellent in shock absorption and vibration reduction. The graph below illustrates the difference in shock, vibration and movement during the 0.15 seconds after the moment of the shot.

Top photo: Carbon Riser Bottom photo: Aluminum Riser

The aluminum riser has at least twice the amount of movement of shock and vibration compared to the all carbon riser. This lesser movement not only reduces postural stability but it also affects the movement of the limb action.

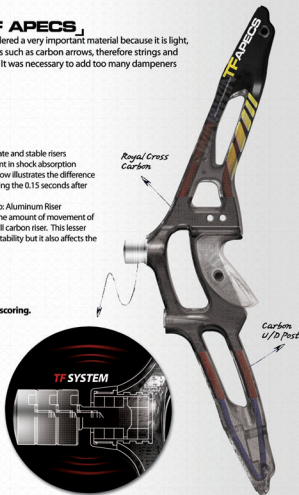
## ■ Role of the NEW TFS\_Torque Free System (patent pending) TFS gives you easy shooting and higher scoring.

### 1) TFS makes for a smoother feel and a better dampened shot

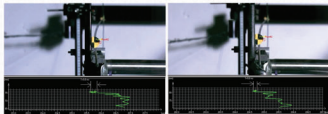


**TFS** gives better shock absorption and vibration reduction than even the common energy absorbing dampeners that are used today. The action of a typical dampener becomes effective in 0.03 seconds after the arrow has left the bow. Although this is very good and the archer feels a big difference, the arrow is already beyond the end of the stabilizer. In other words, although the vibration reduction is felt by the archer, it does not have any influence on the flight of the arrow. **TFS** works to absorb the shock from the very moment when the limb energy strikes the riser. Not

only will the archer feel the shot with less vibration during the shot, it will give the archer a better feel while shooting the arrow. This will give the archer more confidence in their form which will attribute to higher scores.







Normal AL riser

TF APECS riser

\* The marked area is amount of torque movement while the arrow is passing through the sight window.  
**TFS** reduce torque by more than half.

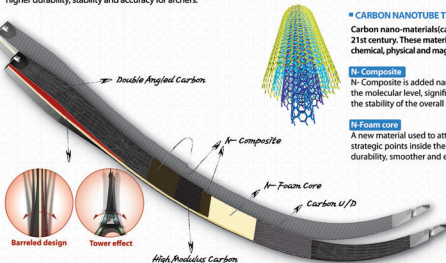
## 2) TFS reduces the torque by more than half!

During the shot, torque can be caused in several different ways, such as grip torque, release torque, postural torque, etc. All of the different types of torque effects arrow flight, mainly the left and right movement of the arrow. Although archer's paradox creates most of the left and right movement of the arrow, the little inconsistencies of torque causes a greater and/or lesser movement upon release. Once the nock leaves the string this torque creates a greater possibility of the fletching touching the arrow rest. This torque continues to interfere with the flight of the arrow until the arrow hits the target. Thus, there is a direct correlation with torque and performance scores. The most important role of TFS is to reduce torque by more than half as seen in the video clip. Therefore, **TFS gives you better arrow paradox consistency, better flight consistency and maximizes your scoring performance.**

## Stability! Accuracy! and Higher durability! 「N-Apecs」 & 「Apecs Prime」

**N-APECS with Nano technology which is only from WIN&WIN. The Most Stability, Most Accuracy and Most Durability Limbs.**

Carbon nanotubes infusion are the strongest and most stable substance known to exist. The superior mechanical properties of carbon nanotube resin produce stability, accuracy limbs with increased durability and shock resistance. WIN&WIN nanotechnology experts to develop molecularly bonded carbon nanotubes combined in the first bow ever. New N-APECS limbs provide higher durability, stability and accuracy for archers.



### ■ CARBON NANOTUBE TECHNOLOGY

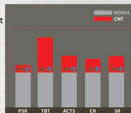
Carbon nano-materials(carbon nanotube and graphite nanofiber) are innovative materials in the 21st century. These materials that are as small as 1/10,000 of a human hair and superior mechanical, chemical, physical and magnetic properties have been being spotlighted as next-generation materials.

#### N-Composite

N-Composite is added nano technology. This adjustment made at the molecular level, significantly strengthens and enhances the stability of the overall carbon matrix.

#### N-Foam core

A new material used to attach the high modulus carbon in strategic points inside the limbs. Nanofoam core, provides a durability, smoother and enhanced overall feel.

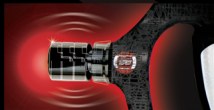


### ■ Barreled design / Tower effect: Patented WIN technology, #424568

Barreled bottom design creates innovative tower effect which means effective shock absorption during the shot and increased accuracy by removing unnecessary movement.

## TF APECS RISER

■ **TF System** \_ Torque Free System (patent pending)



- 1) **TFS** makes for a smoother feel and a better damped shot
- 2) **TFS** reduces the torque by more than half!  
: **TFS** gives you better arrow paradox consistency, better flight consistency and maximises your scoring potential.

■ **Designed by two carbon frames**

The carbon riser improves to absorb shock and vibration and maximizes shooting stability. This structure ensures limb movement is stable and gives you more consistent of arrow groups

TF APECS	25inch
MATERIAL	Carbon
WEIGHT	1260g~1330g *Adjustable Weight
TYPE	RH/LH
COLOR	GLOSSY TYPE _ RED,ORANGE,BLUE,WHITE,BLACK MATT TYPE _ BLACK



**GLOSSY**  
RISER

RED ORANGE BLUE WHITE BLACK

**MATT**  
RISER

BLACK

## n-APECS LIMBS

Win&Win NANO technology



## APECS PRIME LIMBS

PRIME WOOD CORE & NANO technology



NEW

## n-APECS LIMBS

### ■ CARBON NANOTUBE TECHNOLOGY

#### N- Composite

N- Composite is added nano technology. This adjustment made at the molecular level, significantly strengthens and enhances the stability of the overall carbon matrix.

#### N-Foam core

A new material used to attach the high modulus carbon in strategic points inside the limbs. Nanofoam core, provides a durability, smoother and enhanced overall feel.

### ■ Tower Effect

Barreled bottom design creates innovative tower effect which means effective shock absorption during the shot and increased accuracy by removing unnecessary movement. (28-48 lbs)

NEW

## APECS PRIME LIMBS

### ■ Feeling the shot

The APECS PRIME Wood core limbs is designed allows the archer to focus on a stable feeling while at full draw and a sense of power right at the moment of executing the shot. This allows for a stronger focus of concentration and a very stable shot.

### ■ Tower Effect

Barreled bottom design creates innovative tower effect which means effective shock absorption during the shot and increased accuracy by removing unnecessary movement. (28-48 lbs)



## INNO CARBON RISER

### ■ Designed by two carbon frames

This structure ensures limb movement is stable and gives you more consistent of arrow groups

### ■ Accuracy

Maximized straightness and minimized twisting.

### ■ One touch center-shot adjustment system

You can adjust the center-shot simply without unstringing the bow

INNO CARBON	27inch	25inch	23inch
MATERIAL	Carbon	Carbon	Carbon
WEIGHT	1240g	1200g	1160g
TYPE	RH/LH	RH/LH	RH/LH
COLOR	Glossy Color_Red, Orange, Blue, Black Matt Color_Black		

## INNO POWER LIMBS

### ■ Tower Effect

Barreled bottom design creates effective shock absorption and increases accuracy by removing unnecessary movement

### ■ Kevlar hybrid foam

Kevlar added to the foam at intervals of 1 to 4mm maximizes both materials' advantages

### ■ Surprising effects of high modulus carbon&45degrees carbon system

Our 45 degrees carbon system increases shooting stability while protecting the carbon, reinforcing the riser and providing superior anti-twist properties.(28-48 lbs)

# PROACCENT BOW

THE SCIENCE OF SHOOTING FEELING



## PROACCENT CARBON RISER

Are you looking for a high performance riser with not big price tag? Then, it is the ideal solution **PROACCENT CARBON** riser made by hybrid carbon foam.

It is **designed by two carbon frames** like INNOCARBON riser so that it can maximize the strength of the carbonriser greatly at the moment of shooting.

You can also adjust the center-shot simply without unstringing the bow. Check out the **PROACCENT CARBON** soon at your nearest Win&Win dealer or website at [www.win-archery.com](http://www.win-archery.com)

PROACCENT CARBON	25inch	23inch
MATERIAL	Hybrid Carbon	Hybrid Carbon
WEIGHT	1080g	1040g
TYPE	RH/LH	RH/LH
COLOR	 Black / Red, Dark Blue, Pastel Silver, Pastel Blue, Pastel Green, Pastel Pink	

## PROACCENT LIMBS

**CRS foam** core maximizes the durability of the limbs and stability in shooting. It ensures the highest speed.

In addition, **high modulus carbon and 45 degrees carbon system** increases shooting stability while protecting the carbon, reinforcing the riser and providing superior anti-twist properties.

It is developed by **WIN&WIN (28~48 lbs)**

# WINEX BOW

WORLD CHAMPION'S CHOICE

NEW



## WINEX RISER

When you firstly pick up an **WINEX** riser, you know the feel of the grip, the balance smooth finish and stylish design are enough to convince you that **WINEX** is the appropriate riser for you. We have built into the **WINEX** our own dampening system- what we call CFDS - it takes all the shock, vibration, torque and noise out of the handle.

The **WINEX** is so stable and comfortable to shoot and with its 25" length, there is no lateral twisting. The handle weighs 2.73 lbs (1240 gram) and comes in either an anodized finish or painted. For sheer pleasure, well above expectations, see the **WINEX**. Call to your nearest Win & Win dealer soon or see the **WINEX** at [www.win-archery.com](http://www.win-archery.com)

NEW 09 AL	25inch	23inch
MATERIAL	Aluminum	Aluminum
WEIGHT	1060g	1020g
TYPE	RH/LH	RH/LH
COLOR		
RED, YELLOW, BLUE, BLACK, GRAY, SILVER, WHITE		

## WINEX LIMBS

Honey Foam / Royal cross carbon limbs The secret of the smooth performance of the new **WINEX** limbs lies in its high-tech honey foam core and torsion make up. We call it the HF factor. Our engineers have been working on this revolutionary new limb for over two years and are proud of its excellent stability and strength... and its speed. The HF limbs handle all weather conditions hot, humid, drizzly or icy- **WINEX** maintains the sweet smoothness that all recurvers want. From the Olympic archers to the average club member who want only the best limbs, you won't find a better pair of limbs than **WINEX**. **WINEX** is available in weight ranges from 28lbs to 48lbs in 2lbs increments. If you want the best, you need **WINEX** HF carbon limbs. See **WINEX** at your nearest Win & Win dealer or visit at [www.win-archery.com](http://www.win-archery.com) (28-48 lbs)

# WINACT BOW

THE SCIENCE OF SHOOTING



## WINACT RISER

An attractive style and finish normally are shown on higher priced risers - you will be very impressed with the **WINACT**. This is a precision built handle that comes in two sizes, the 25" model and the 23", which is slightly lighter. **WINACT** does not look out of place on the line along side fancy bows that come with a big price tag. **WINACT** a solution to win. Check out the **WINACT** soon at your nearest Win & Win dealer or website at [www.win-archery.com](http://www.win-archery.com)

WINACT	25inch	23inch
MATERIAL	Aluminum	Aluminum
WEIGHT	1100g	1040g
TYPE	RH/LH	RH/LH
COLOR	 Silver / Red, Silver / Blue, Silver / Black, White	

## WINACT LIMBS

Are you looking for high performance limbs that are going to give you really tight groupings? Do you want to be in the winner's circle? Do you want to achieve a better score than you thought possible? Then **WINACT** limbs are for you. **WINACT** limbs have produced consistent results in competitions the world over, breaking records at world championships and winning medals at recent Olympic Games. **WINACT** are made of tough carbon fiber and produce blistering speed with a smooth performance and stability without the vibration that comes with some limbs. **WINACT** - World Champion's choice. **WINACT** limbs come in weight ranges starting at 24lbs through to 48lbs in 2lbs increments and in an attractive pearl white color. If you want better quality limbs, you should buy **WINACT**. You can see **WINACT** today at your nearest Win & Win dealer or click on [www.win-archery.com](http://www.win-archery.com) (24-48 lbs)

*Just Feel It!*



## ACCESSORIES SERIES

As well as manufacturing the finest quality recurve bows, WIN&WIN makes an excellent range of archery accessories. Our own staff have designed or contributed to many offerings of ours. We also listen to archers and understand their needs. Our products are renowned for their quality, design and reliability. Most of all, they suit archers!



## ■ SIGHT WS600



The features of our **WS600** sight are:

- The carbon/foam extension minimizes the sight weight which prevents torque in shooting. In addition, carbon/foam absorbs damaging vibration caused by the shot and makes shooting more stable.
- The unique bolt tuning system gives easy and convenient vertical adjustment.
- The slide bar on the sight head creates a smooth and extremely close measurement adjustment.
- The locking cover system is solid and stable.

**Color Option** : Black, Silver  
Available in **RH** and **LH**

## ■ STABILIZER HMC



Recurve archers strive for arrow speed but this results in increased vibration and up until now, stabilizers have not been able to effectively reduce vibration. We have developed a revolutionary new stabilizer called the **HMC** stabilizer which specifically addresses this issue, by improving dampening, absorbing shock and controlling torque.

Other stabilizers have an even wall thickness along the length of the rod and this does not absorb all vibration, whereas the **HMC** features a unique design – it has a wall thickness of 0.0275" (0.7mm) at the front of the rod and 0.0591" (1.5mm) at the base and the diameter has been enlarged from 0.669" (17mm) to 0.728" (18.5mm) to successfully absorb the shock and vibration along the entire length of the rod.

**HMC** comes in the long rod - 26", 28" & 30", the short rod - 10", 11" & 12" and extenders - 3", 4" & 5", finished in a smart light gray color.

- 1) This vibration graph illustrates how other stabilizers release vibration but the **HMC stabilizer** absorbs vibration at the source.
- 2) Other stabilizer (top) and the **HMC** (bottom). See how the other stabilizer is the same thickness along the whole rod, whereas the **HMC** starts out as a slightly larger wall at the base but gradually reduces to about half the size at the front of the rod.
- 3) Vibration wave graphic shows how vibration is more effectively controlled on the **HMC** because it is absorbed progressively along the entire rod; with other stabilizers, the vibration is released back into the riser

## ■ CX V-BAR



The **CX** all carbon V-Bar is a proven performer, being much better at absorbing vibration than other aluminum V-Bars. **Comes in three angles 35, 40 and 45 degrees.**

## ■ MF DAMPER



The **MF** Dampers are outstanding for controlling dampening and absorbing vibration. The **MF** Dampers use a special formula of foam to ensure no vibration and to dampen noise.

## ■ WK400 CUSHION PLUNGER



The **WK400** Cushion Plunger pressure button has a smooth action, is finished in a stylish polished aluminum in either **black** or **silver** and has a special long wearing PTFE coating on its tip.

Thread size: 5/16"-24, 5/16"-29 (for **INNOCARBON** riser)

Adjustable length: min.17.5mm / max.23.0mm

## ■ BEARING ARROW REST



**Color Option**\_Black , Silver

**Comes in black or silver and is available in RH or LH**



#### ■ **TY MULTI** BOW STAND

The **TY Multi Bow Stand** was designed for indoor and outdoor uses. The **TY Multi Bow Stand** is solidly built, remains stable in all conditions to firmly support your bow. The **TY Multi Bow Stand** is light, yet strong and durable and folds for easy storage. Comes in silver with three flip lock legs.



#### ■ **A/E** ARM GUARD Comes in green, blue or red



#### ■ **360 CORDOVAN** FINGER TAB

The **360 Cordovan Finger Tab** was designed with your comfort in mind. Comes in Large, Medium and Small, Available in RH or LH



#### ■ **CARBON** CLICKER

Available in three thread sizes: 6-32, 4-40, M4 with a spare tip.



INSIDE



## ■ BOWCASE

The smart, solid design makes comfortable use to carry.

**Material :** ABS

**Color :** Black, Silver

**Inner size :** 830 X 330 X 205 (mm)

**Outer size :** 878 X 348 X 219 (mm)



## ■ MAGNETIC QUIVER

**Sizes :** Large & Medium

**Color Option :** Black only

Available in RH and LH



## ■ WECOURSE CHEST GUARD

Available in black only, in two sizes Large or Medium and in RH or LH



## ■ SCAPOWER

The **SCAPOWER Stretch Band** increases the archer's pulling weight, builds up muscles and develops firmness in the shoulder, improves posture and technique and by regular and consistent use, greater accuracy and stability in shooting. Daily practice for 10 minutes with the stretching band and a break of 2 or 3 minutes, improves pulling back the bow, better shot placement, drawing back and balance with the bow shoulder.



## ■ GRIPPER GRIP MAKER

You can make the fit custom grip easily and fast by yourself with Win&Win grip maker.



## ■ ARROW PULLER

## 2009 **W&W** Riser Configuration

Features				Weight	RH	LH	Color
Riser	Carbon Riser	TF APEX Riser	25 inch	1260g~1330g <small>* Adjustable Weight</small>	●	●	Glossy Color_Red, Orange, Blue, Black Matt Color_Black
			27 inch	1240g	●	●	
		INNO CARBON Riser	25 inch	1200g	●	●	Red, Blue, Black, White, Dark-Red, Orange, Cobalt Blue
			23 inch	1160g	●	●	
			25 inch	1080g	●	●	Black/Red, Dark Blue, Pastel Silver, Pastel Blue, Pastel Green, Pastel Pink
	Aluminum Riser	PROACCENT CARBON Riser	23 inch	1040g	●	●	
			25 inch	1240g	●	●	Red, Blue, Black, Gray, White, Yellow, Silver
		WINEX Riser	25 inch	1110g	●	●	Red, Blue, Black, Gray
			23 inch	1050g	●	●	Silver/Red, Silver/Blue, Silver/Black, White

## 2009 **W&W** Limbs Configuration

Features			Material	Poundage
Limbs	Foam Core	N- APEX Limbs	Nano foam core / High Modulus Carbon	28~48lbs
		INNO POWER Limbs	Kevlar Hybrid Foam / High Modulus Carbon	28~48lbs
		PROACCENT Limbs	CRS Foam / High Modulus Carbon	28~48lbs
		WINEX Limbs	Honey Foam / Royal Cross Carbon	28~48lbs
	Wood Core	APEX PRIME Limbs	Wood Nano core / High Modulus Carbon	28~48lbs
		WINACT Limbs	Wood / Royal Cross Carbon	24~48lbs



820-9 Donghang-Ri, Yangsung-Myun, Ansung-Shi, Kyungki-Do,  
456-931, Korea **Tel.** 82-31-671-0898 **Fax.** 82-31-671-0897 **Email:** win@win-archery.com **I** <http://www.win-archery.com>

\* WIN&WIN Archery Co. has the right to change the products without prior notice.

