



WINNING ACTION & WINNING SPIRIT

WIAWIS



2017
PRODUCT
GUIDE

2016 Rio Games, WIAWIS Clean Sweep all of GOLD medals!

Since the 2000 Sydney Games,
every games, gold medals have been
with technology of WIAWIS.

Women's Gold Medalist
CHANG Hyejin

Women's Team Gold Medalist
KI Bobae / CHANG Hyejin / CHOI Misun



CHINA
Wu Jiaxin



UNITED KINGDOM
Naomi Folkard



CHINESE TAIPEI
Wei Chun Heng



BRAZIL
Bernardo Oliveira



INDIA
Jayanta Talukdar



Men's Gold Medalist
KU Bonchan

Men's Team Gold Medalist
KU Bonchan



AUSTRALIA
Ryan Tyack

FRANCE
Lucas Daniel

AUSTRALIA
Taylor Worth

JAPAN
Furukawa Takaharu

SPAIN
Juan i. Rodriguez



WHAT CHAMPIONS ARE MADE OF... WIN&WIN ESSENTIAL FOR VICTORY!

WIN&WIN has the passion and experience that has maintained KOREA's archery dominance since the 1980s. Our staff aim for excellence with each WIN&WIN product they create.

We manufacture for a world of champions, where every archer in every nation strives for perfection.

A world of professionalism and power: born to win.

WIN&WIN ARCHERY products are proven at World Championships and Olympic Games, and continually set new world records. But we are not satisfied. In fact, we are only just getting started...

CONTENTS

WIN&WIN TECHNOLOGY	06
WIAWIS BOWS	08
CARBON RISER	10
WIAWIS NANO TFT	12
WIAWIS NANO MAX	14
INNO CXT	15
ALUMINUM RISER	16
WIAWIS ATF	17
INNO AXT	18
WINEX-II	19
LIMBS	20
WIAWIS-NS	22
WIAWIS ONE	23
INNO EX POWER & PRIME	24
WINEX-II	25
BOW SPECIFICATIONS	26
WIAWIS ACCESSORIES	27
STABILIZER	28
WIAWIS S21	29
HMC PLUS	30
SIGHT	31
WS700	32
WS600	33
OTHERS	34
APPAREL COLLECTION	40



WIN&WIN TECH- NOLOGY

WE ARE
BORN TO WIN
ARE YOU?

***WIN&WIN EQUIPMENT IS CREATED
BY THE BEST AND CHECKED BY THE BEST.***

NANO TECHNOLOGY: ONLY FROM WIN&WIN

The new WIAWIS Bows from WIN&WIN are the more stable, accurate and durable bows ever made.

WIAWIS ONE Limbs are infused with molecularly-bonded carbon nanotubes, the strongest modern material known to exist. Carbon nanotube resin has superior mechanical properties that produce consistent, accurate and secure limbs that effectively reduce shock. They are exceptionally made, resistant to twisting and damage, and feel extremely smooth to shoot. Developed by WIN&WIN's manufacturing experts, the advanced nanotechnology in the new WIAWIS Bow is the future of archery consistency and accuracy. It is the science of shooting feeling.



WIN&WIN CARBON TECHNOLOGY

High-tech engineering creates the best carbon material mixture for WIN&WIN bows, improving product quality and gaining athletes' confidence.



CARBON NANOTUBE TECHNOLOGY

Carbon nanotube and graphite nanofiber are true 21st century materials. They can be made as small as 1/10,000th of a human hair, and have superior mechanical, chemical, physical and magnetic properties. Scientists believe nano-materials are the building blocks for the next generation of engineering.



WEIGHT BALANCE SYSTEM

The Weight Balance System is installed in the middle of the riser front end. It moves the center of gravity towards the front side, giving a more comfortable shooting feel and reducing unnecessary movement.



STRAIN BALANCE SYSTEM

A balance system concentrated on the top of the limbs distributes strain energy to the overall limb. It helps to minimize unnecessary limb movement and keeps your shooting smooth and stable.



THE SCIENCE OF SHOOTING FEELING

WIN&WIN products are designed with the archer in mind. Every innovative technology we use is part of the science of shooting feeling.



WIN&WIN BOW TECHNOLOGY

Archery specialists and composite material professionals work together at our high-tech facilities to develop each WIN&WIN product. With the right balance of expertise and passion, they deliver the science of archery every single day.



3Ss: SPEED, STABILITY & SMOOTHNESS

Limbs are evaluated by three measurements: arrow speed, stability and smoothness. We research, design and develop all our bows based on these key factors. This makes sure that archers love each and every WIN&WIN product.



CROSS CARBON LIMB TECHNOLOGY

A carbon fabric exclusively produced by WIN&WIN reinforces limbs against twisting and raises their elastic modulus. That means the limbs are stiffer, more stable and produce higher arrow speeds.



HIGH TECH FOAM CARBON

Traditional limbs are coated in glass fiber to protect the carbon but it reduces arrow speed because it is so heavy. WIN&WIN uses a 45-degree carbon system that effectively protects the limb, increases shooting stability and reinforces against twisting.



THE SCIENCE OF STRING FOLLOW-THROUGH

WIN&WIN engineers know that bow performance is measured on accuracy, stability, arrow speed and how smooth it feels at the moment it is shot. The last is the most important, and the string follow-through or string reaction on release is a major indicator of whether a bow feels good.



ABSORB VIBRATION SYSTEM

WIN&WIN's revolutionary new stabilization system specifically addresses the issue of vibration travelling back into the bow. The new HMC PLUS stabiliser's unique design absorbs shock, improves dampening and controls torque during shooting.



TORQUE FREE

Torque as the bow twists in an archer's grip when they release affects arrow flight directly, and will lessen accuracy. Reducing torque within the 0.03 seconds after an arrow is released dramatically improves consistency. WIN&WIN's TFS device absorbs shock and vibration on shooting, minimizes torque and increases accuracy.



CENTER SHOT ADJUSTMENT SYSTEM

With WIN&WIN's unique system, limb and riser alignment can be adjusted without unstringing the bow. We also designed a highly-specialized washer that prevents limb bolts from randomly coming loose.



TOWER EFFECT

WIN&WIN's barrelled bottom (thicker and wider) design creates an innovative tower effect. This absorbs shock during the shot and increases accuracy by removing unnecessary movement in the bow.



ALUMINIUM FORGING TECHNOLOGY

Our hot forging system enhances the useful properties of all WIN&WIN aluminum products, like tensile strength and hardness.



EXTREME DURABILITY

WIN&WIN bows are made to a superior standard. During development each design must survive a 100,000-repetition durability test.



T6 HEAT TREATMENT

T6 heat treatment raises the tensile strength and elastic modulus of WIN&WIN aluminum risers, making them resilient to intense shock.



IDEAL GRIP

The WIN&WIN ideal grip is moulded to accept the joint of each finger, making drawing and aiming easier and minimizing torque during shooting.





WIAWIS BOWS

WE ARE
BORN TO WIN
ARE YOU?

WINNING IN ACTION, WINNING IN SPIRIT

Wiawis NANO MAX handle and Wiawis ONE limbs represent the pinnacle of nano carbon technology.

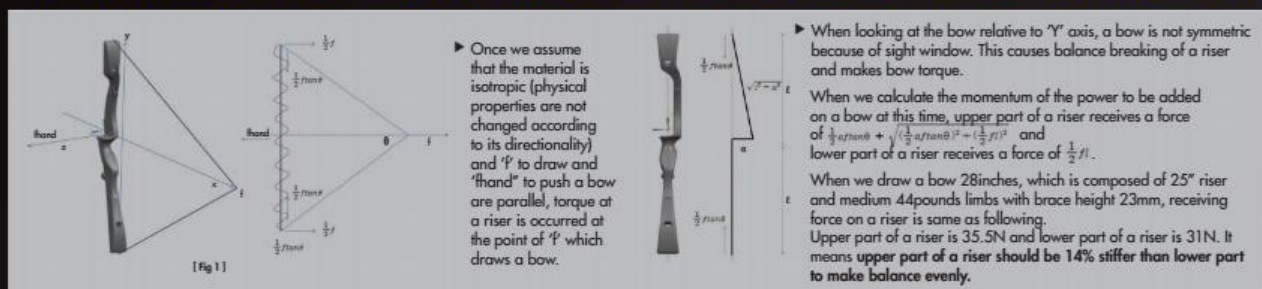
WIN&WIN's carbon technology is excellent at absorbing shock and minimizing unnecessary movement to make shooting more accurate and stable. Better, faster, stronger!



CARBON RISER	10
WIAWIS NANO TFT	12
WIAWIS NANO MAX	14
INNO CXT	15
ALUMINUM RISER	16
WIAWIS ATF	17
INNO AXT	18
WINEX-II	19
LIMBS	20
WIAWIS-NS	22
WIAWIS ONE	23
INNO EX POWER & PRIME	24
WINEX-II	25

WIAWIS NANO TFT

CONTROL BOTH UPPER AND LOWER BALANCES OF THE RISER BY ANALYZING STRUCTURE OF SIGHT WINDOW.

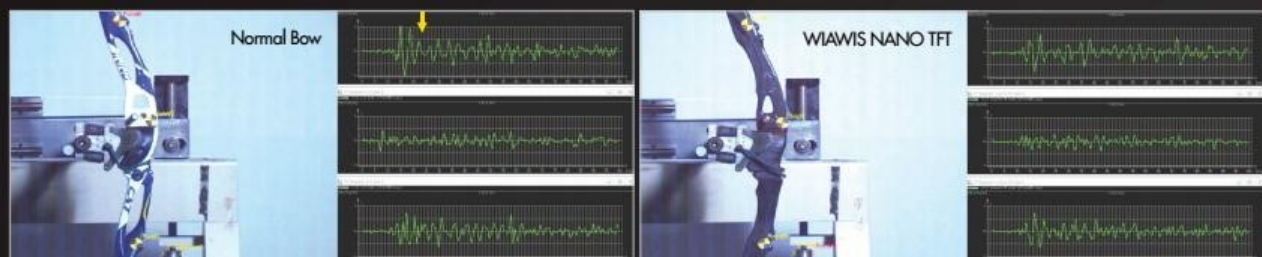


STABILITY OF A RISER DIRECTLY AFFECTS LIMB MOVEMENT.

You can see in below graph that string movement of the bow set up a WIAWS TFT riser is narrower and more stable. We tested the bows in 42 pounds. This was possible because we reinforced the sight window part of a riser. It makes anti-twisting and torque minimize at the moment of shooting as well as well-balanced the riser overall.



WE ANALYZED SHOOTING SHOCK AND VIBRATION TO BE ADDED ON A RISER AND MADE THEM BE BALANCED ON THE RISER OVERALL. IT MAXIMIZES STABILITY OF THE RISER.



- As reviewing the present bows, most of vibration is occurred at the sight window of a riser. It directly affects bow torque and balance of both limbs in shooting. 2017 WIAWS TFT riser is well balanced overall so it extends till after shooting. It means torque is reduced in shooting and it directly affects increasing score with stable shooting feeling.

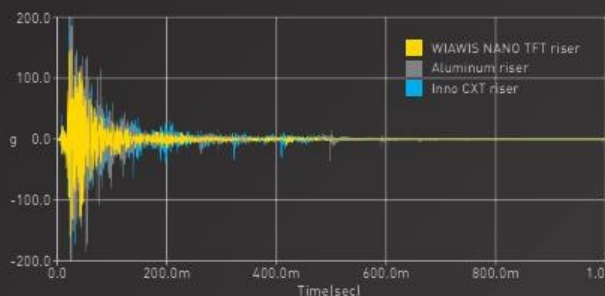
WIAWIS NANO TFT RISER INSERTED SPECIAL METAL OF H-BEAM SHAPE IS FREE AT TORQUE AND MADE OF ALL CARBON.

INITIALLY, WE REDEEMED RIGIDITY AT THE PART OF SIGHT WINDOW AND MAXIMIZED PERFORMANCE OF THE RISER.

We analyzed momentum of the power to be added at the riser and introduced 'Torque Free System' of H-Beam form to minimize torque at the moment of shooting.

Torque Free System is...

1. Rigidity at the sight window is increased. It reduces torque and vibration and also increases stability at the moment of shooting. This feature can be proven as below, which tests shooting shock and vibration of the bows set up the limbs in 42 pounds.



2. We made the shock well-balanced on upper and lower parts of the riser so that its performance was optimal.

TORQUE FREE SYSTEM



WIAWIS NANO TFT

WIAWIS TFT RISER INSERTED SPECIAL METAL
OF H-BEAM SHAPE IS FREE AT TORQUE
AND MADE OF ALL CARBON





TECHNICAL SPECIFICATIONS

- 25 inches (1280g) RH / LH
- Carbon Graphite / Nano Carbon



WIAWIS NANO MAX

NANO CARBON
TECHNOLOGY
FASTER,
BETTER,
STRONGER!



BLACK
GOLD



BLACK
RED



BLACK
ORANGE



BLACK
NEON
YELLOW



BLACK
BLUE



BLACK
PINK



WHITE
PINK



WHITE
GREEN



Nano carbon is the supreme material for stiffness. When mixed with carbon fibers, mechanical strength is increased approximately 30~40% compared to using normal carbon fiber - and with increased durability, too. When Nano carbon is applied to the riser, shock and vibration absorption enhances 150 to 200% more than when using carbon fibers only. This function reduces unnecessary shooting movement by over 30%, creating a clean shot with better arrow grouping.

TECHNICAL SPECIFICATIONS

- ▶ 25 inches (1320g) RH / LH
- ▶ 27 inches (1370g) RH only
- ▶ Carbon Graphite / Nano Carbon



INNO CXT

UNIQUE DESIGN
OPTIMISING
CARBON



BLACK

RED

BLUE

WHITE



LIGHT VERSION



BLACK+WHITE GOLD

DARK BLUE WHITE



SKY BLUE WHITE

PINK WHITE



Made to maximize the properties of carbon, the INNO CXT riser minimizes unnecessary limb movement when an arrow is released. This makes shooting far more stable and efficient by lessening the wasted energy lost as vibration. The INNO CXT is so pioneering it won a Red Dot Design Award. The problem of twisting and bending in carbon risers is a thing of the past. WIN&WIN engineers solved these issues with improvements to the molding process used to make the INNO CXT. It is possible to achieve practically perfect limbs and riser alignment with WIN&WIN bows.

Do not settle for anything less than the perfect fit: choose the right WIN&WIN INNO CXT for you.

TECHNICAL SPECIFICATIONS

- ▶ 23 inches (1130g / LIGTH : 1070g) RH
- ▶ 25 inches (1210g / LIGTH : 1150g) RH / LH
- ▶ 27 inches (1270g / LIGTH : 1210g) RH
- ▶ Carbon Graphite / Carbon

12mm



WIAWIS ATF

STIFFNESS AGAINST TORSION THROUGH
BIDIRECTIONAL 45-DEGREE FRAME STRUCTURE



ANODIZING



BLACK



RED



BLUE



PINK



WHITE
(PAINTED)



NEON YELLOW
(PAINTED)



The stylish WIAWIS ATF is perfectly balanced for ultimate accuracy and consistency.

Especially, ATF riser's 45-degree frame structure prevents twisting and makes it stable to shoot with. Advanced material technology makes the side of sight window over 10% stronger than any other risers'.

There is no lateral twisting in this 25" riser, making it feel completely comfortable to shoot with. Weighing 1300 grams, the WIAWIS ATF feels solid in the hand and the hard, strong metal it is made from inspires confidence. This is a serious riser, primed and ready for the world stage.

TECHNICAL SPECIFICATIONS

- 25 inches (1300g) RH / LH
- Forged Aluminum / Cut by Machine



INNO AXT

EXTREME TECHNOLOGY

ANODIZING



BLACK



RED



BLUE



GOLD



GREEN



PINK



WHITE
(PAINTED)



NEON YELLOW
(PAINTED)



Combining the award-winning design of the INNO CXT with the trusted traditional materials, the new INNO AXT is a premier competitive riser. Forged in aluminum and CNC machined, it significantly increases stability and accuracy in shooting. The INNO AXT has improved tensile strength by 30% over normal solid aluminum risers. The INNO AXT feels heavier in the hand, weighing 1330 grams. This new innovative riser is very stable to shoot due to the balanced weight. It is perfect for archers who prefer the confident feel of metal when they pick up their bow.

TECHNICAL SPECIFICATIONS

- 25 inches (1330g) RH / LH
- Forged Aluminum / Cut by Machine



WINEX-II

THE IDEAL BOW FOR
SERIOUS SHOOTING



BLACK



RED



BLUE



WHITE



YELLOW



RED
SILVER



BLUE
SILVER



The WINEX-II riser wins fans from the moment they feel their hand nestle into its well-shaped grip. Made from strong forged aluminum, the 25" riser is stylishly designed and structured to prevent lateral twisting, making it stable and comfortable to shoot with. The handle weighs 1250 grams and comes painted.

TECHNICAL SPECIFICATIONS

- 25 inches (1250g) RH / LH
- Forged Aluminum / Cut by Machine



WIAWIS NS

THE FRUIT OF NANO TECHNOLOGY
- GRAPHENE FOAM CORE

NANO CARBON TECHNOLOGY - MADE IN KOREA

WIAWIS-NS

NANO CARBON TECHNOLOGY - MADE IN KOREA

WIAWIS

W&W

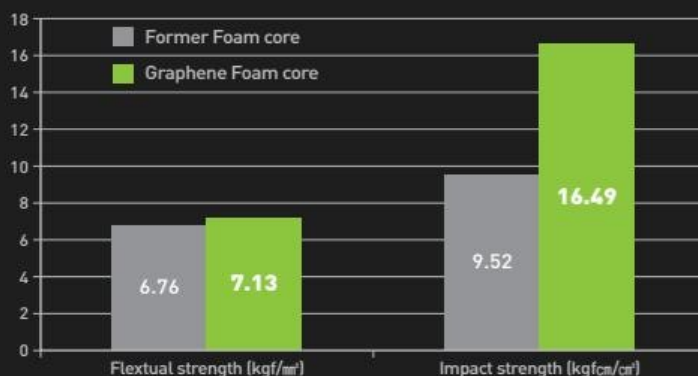
W&W
WIN&WIN ARCHERY

NANO
TECHNOLOGY



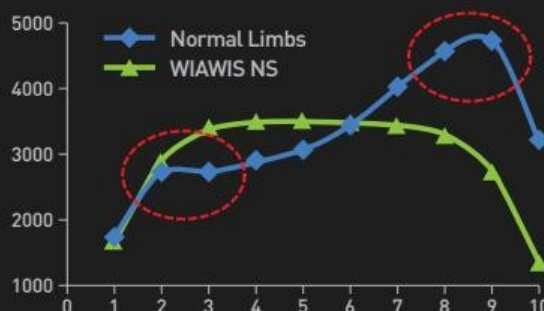
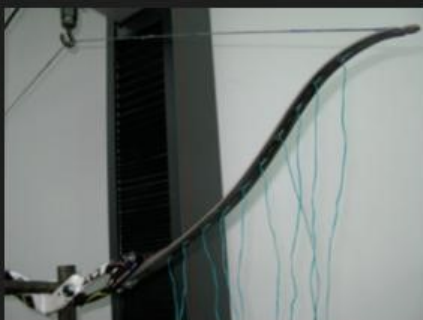
THE FRUIT OF NANO TECHNOLOGY – GRAPHENE FOAM CORE

- ▶ Graphene in thickness of 0.2 nanometers is over 200 times stronger than steel and much better than CNT(Carbon Nano Tube) to absorb shock. That's why we call it 'the fruit of Nano technology'. The new foam material used graphene has excellent tensile strength and approximately twice better impact strength than present foam material. It was developed by WIN&WIN in itself.
- ▶ 2017 'WIAWIS NS' limbs made of the foam core used graphene are very light, strong and excellent to absorb shock and vibration. So it is more stable and accurate in shooting.



CONTROL OF BENDING DISTRIBUTION OF LIMBS

WIN&WIN has researched the correlation between stability and speed according to limb bending for long period and 2017 'WIAWIS NS' limbs are born to have optimal bending distribution. They were improved both stability and power than any other limbs in shooting.



※ Near the limb tip parts are bent excessively. It makes shooting unstable and arrow grouping bad. Finally, it causes limb breakage because of irregular limb bending overall

STABLE STRING MOVEMENT

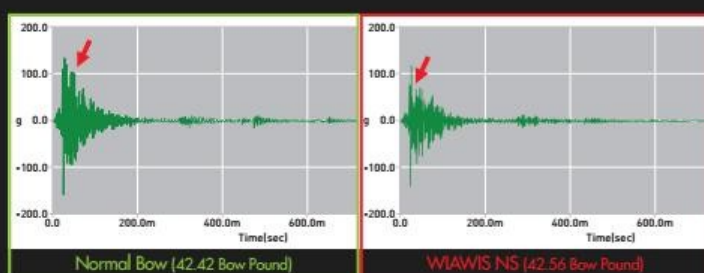
- ▶ String movement is an 'indicator of bow performance' when shooting.
- ▶ The narrower and shorter string movement is, the more superior bow performance is.
- ▶ 2017 WIAWIS NS limbs being improved power and stability have shorter and narrower string movement than any other limbs. This makes shooting more forgiving so that the archer can send the arrow in its intended direction. This affects how efficient the energy transfer from the limbs to the bow and arrow.



SIZE OF SHOCK AT THE MOMENT OF SHOOTING IS PROPORTIONAL TO THE BOW TORQUE. WHAT SHOOTING SHOCK IS LITTLE MEANS BOW TORQUE REDUCED AND ARROW GROUPING BETTER.

SHOCK AND VIBRATION ABSORPTION OF WIAWIS NS LIMBS

2017 WIAWIS NS limbs used graphene are excellent to absorb shock and vibration. It also makes shooter feel more stable.



WIAWIS-NS



GRAPHENE FOAM CORE

The new foam material used graphene has excellent tensile strength and approximately twice better impact strength than present foam material. It was developed by WIN&WIN in itself.

2017 WIAWIS NS limbs being improved power and stability have shorter and narrower string movement than any other limbs. This makes shooting more forgiving so that the archer can send the arrow in its intended direction. This affects how efficient the energy transfer from the limbs to the bow and arrow.

TECHNICAL SPECIFICATIONS

- ▶ 28 to 48 lbs (2 lbs increment)
- ▶ 66, 68, 70 inches
- ▶ Glossy & Matt
- ▶ Nano Graphene Foam Core/High Modulus Carbon

WIAWIS ONE



FOAM CORE

Nano technology combined foam core limbs enables more powerful and smooth shooting. This characteristic increases durability, makes the limbs stable to shoot and enhances the shot feeling with fast arrow speed.

TECHNICAL SPECIFICATIONS

- ▶ 28 to 48 lbs (2 lbs increment)
- ▶ 66, 68, 70 inches
- ▶ Glossy
- ▶ Nano Foam Core/High Modulus Carbon/Flaxpreg



WOOD CORE

The timbers used in WIN&WIN's wood core range are selected by a rigorous quality specification and sorting process to create the perfect limb.

By combining wood with superior Nano carbon that has extremely high strength and vibration reduction, WIAWIS wood core limbs give a very stable feel at full draw and incredible power at the moment of release. They enables constant, powerful shooting with enhanced arrow grouping.

TECHNICAL SPECIFICATIONS

- ▶ 28 to 48 lbs (2 lbs increment)
- ▶ 66, 68, 70 inches
- ▶ Glossy
- ▶ Nano Wood Core/High Modulus Carbon/Flaxpreg

INNO EX POWER & PRIME



EX POWER (FOAM CORE)

The carbon outer structure of INNO EX POWER limbs is created with N-composite carbon nano technology. This is an adjustment at the molecular level that significantly strengthens and enhances the stability of the carbon matrix. Inside the limb, the nanofoam core connects the high-modulus carbon at strategic points. It provides durability, makes the limbs smooth to shoot and enhances their overall feel. WIN&WIN is leading the way in recurve limb technology : superior speed, stability and shooting feeling make INNO EX POWER the best carbon limb available.

TECHNICAL SPECIFICATIONS

- ▶ 28 to 48 lbs (2 lbs increment)
- ▶ 66, 68, 70 inches
- ▶ Glossy
- ▶ Nano Foam Core / High Modulus Carbon



EX PRIME (WOOD CORE)

Utilising WIN&WIN's N-composite carbon nano technology, the structure of INNO EX PRIME limbs is significantly stronger, right down to its molecular carbon matrix. INNO EX PRIME contains a core made of meticulously selected wood. This makes the limb feel very stable at full draw and extremely powerful at the moment of release. Focus on your draw, aim and executing the perfect shot. Let INNO EX PRIME concentrate on delivering a consistent, stable arrow down the range.

TECHNICAL SPECIFICATIONS

- ▶ 28 to 48 lbs (2 lbs increment)
- ▶ 66, 68, 70 inches
- ▶ Glossy
- ▶ Nano Wood Core / High Modulus Carbon

WINEX-II



Royal cross carbon is the secret to the WINEX's smooth performance. WIN&WIN's 45-degree carbon system protects the surface of the limb and provides stability, while the barrelled bottom design increases accuracy by reducing unnecessary movement when the bow is shot.

WINEX-II limbs are available in draw weights from 28lbs to 48lbs, in 2lb increments.

TECHNICAL SPECIFICATIONS

- ▶ 28 to 48 lbs (2 lbs increment)
- ▶ 66, 68, 70 inches
- ▶ Royal Cross Carbon

2017 WIN&WIN BOW SPECIFICATIONS

RISER TECHNICAL SPECIFICATIONS

RISER	LENGTH	MASS WEIGHT	TYPE	MATERIAL
WIAWIS NANO TFT	25 inch	1280g	RH / LH	Carbon Graphite / Nano Carbon
WIAWIS NANO MAX	25 inch	1320g	RH / LH	Carbon Graphite / Nano Carbon
	27 inch	1370g	RH	Carbon Graphite / Nano Carbon
INNO CXT	23 inch	1130g	RH	Carbon Graphite / Carbon
	25 inch	1210g	RH / LH	Carbon Graphite / Carbon
	27 inch	1270g	RH	Carbon Graphite / Carbon
INNO CXT LIGHT	23 inch	1070g	RH	Carbon Graphite / Carbon
	25 inch	1150g	RH / LH	Carbon Graphite / Carbon
	27 inch	1210g	RH	Carbon Graphite / Carbon
WIAWIS ATF	25 inch	1300g	RH / LH	Forged Aluminum / Cut by Machine
INNO AXT	25 inch	1330g	RH / LH	Forged Aluminum / Cut by Machine
WINEX-II	25 inch	1250g	RH / LH	Forged Aluminum / Cut by Machine

LIMBS TECHNICAL SPECIFICATIONS

LIMBS	LENGTH	POUNDAGE	TYPE	MATERIAL
WIAWIS NS (FOAM)	66", 68", 70"	28 ~ 48 lbs	Glossy & Matt	Nano Graphene Foam Core / High Modulus Carbon
WIAWIS ONE (FOAM)	66", 68", 70"	28 ~ 48 lbs	Glossy	Nano Foam Core / High Modulus Carbon / Flaxpreg
WIAWIS ONE (WOOD)	66", 68", 70"	28 ~ 48 lbs	Glossy	Nano Wood Core / High Modulus Carbon / Flaxpreg
INNO EX POWER	66", 68", 70"	28 ~ 48 lbs	Glossy	Nano Foam Core / High Modulus Carbon
INNO EX PRIME	66", 68", 70"	28 ~ 48 lbs	Glossy	Nano Wood Core / High Modulus Carbon
WINEX-II	66", 68", 70"	28 ~ 48 lbs	Glossy	Royal Cross Carbon



WIAWIS ACC.

**WE ARE
BORN TO WIN
ARE YOU?**

STATE OF THE ART

The WIAWIS accessories series is focused on giving you an incredibly comfortable shot - with elegant design, too.



STABILIZER	28
WIAWIS S-21	29
HMC PLUS	30
SIGHT	31
WS700	32
WS600	33
OTHERS	34



WIAWIS S21

RIGIDITY IS INCREASED TO MINIMIZE TORQUE IN SHOOTING

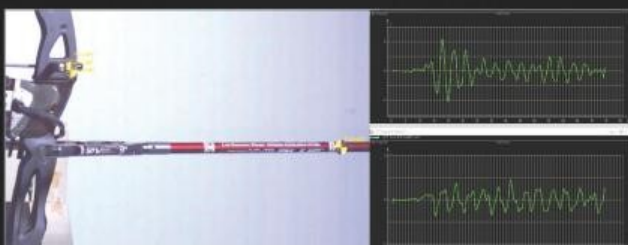
New WIAWIS S21 stabilizer increased stiffness using tapered tube on end part of the stabilizer. It absorbs shooting shock more efficiently to be transferred in shooting with eliminating torque by controlling bow movement more stable.



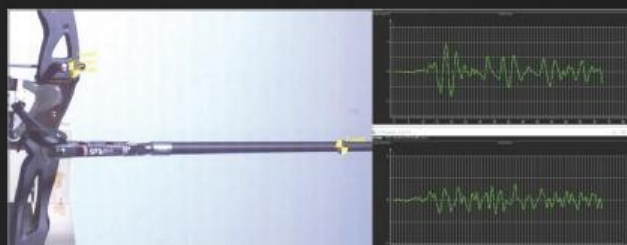
[Structure of 2017 WIAWIS S21 stabilizer]



When setting WIAWIS S21 stabilizer on a bow, riser movement is more well-balanced and stable.



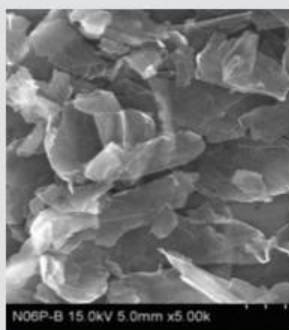
HMC Stabilizer



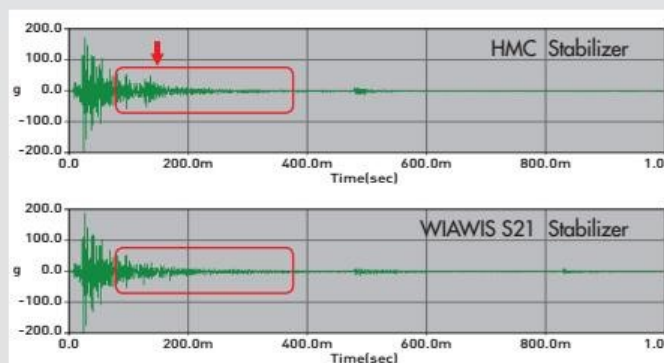
WIAWIS Stabilizer

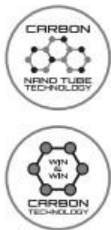
GRAPHENE FOAM CORE STRUCTURE

Syntactic foam core structure used Graphene increases rigidity of the rod and absorbs shock and vibration more efficiently.



2017 WIAWIS stabilizer shows excellent shock resistance as below at the shooting shock test. [Test bow was set up with 42 pounds limbs.]





S21 WEIGHT
(Flat & Head)



WIAWIS S21 V-BAR

- ▶ THREE STRAIGHT ANGLES : 35, 40, 45 degrees
- ▶ WEIGHT : 112g
- ※ SOLD SEPARATELY



BW & BW SHORT DAMPERS

- ▶ LENGTH : BWD 40mm / BWD SHORT 25mm
- ▶ WEIGHT : BWD 45.5g / BWD SHORT 32.5g
- ▶ THREAD SIZE : 1/4" x 20(M)
- ※ SOLD SEPARATELY



TECHNICAL SPECIFICATIONS

- ▶ LONG ROD LENGTH 26, 28, 30, 32 inches
- ▶ SHORT ROD LENGTH 10, 11, 12 inches
- ▶ EXTENDER LENGTH 3, 4, 5, 6 inches

HMC PLUS



LONG



WEIGHT
(Flat & Head)



SHORT



EXTENDER

WIAWIS CX2 V-BAR

- ▶ THREE STRAIGHT ANGLES : 35, 40, 45 degrees
- ▶ WEIGHT : 118g
- * SOLD SEPARATELY



WIAWIS ACS DAMPER

- ▶ LENGTH : 50mm
- ▶ WEIGHT : 33g
- ▶ THREAD SIZE : 1/4" x 20(M)
- * SOLD SEPARATELY



CARBON
BLACK MATT



BLACK
GOLD



BLACK



RED



BLUE



WHITE



TECHNICAL SPECIFICATIONS

- ▶ LONG ROD LENGTH

26 inches (206.5g)	28 inches (225g)
30 inches (232.5g)	
- ▶ SHORT ROD LENGTH

10 inches (141g)	11 inches (145g)
12 inches (156g)	
- ▶ EXTENDER LENGTH

3 inches (70g)	4 inches (84g)
5 inches (87.5g)	6 inches (90.5g)

WS700 SIGHT

THE FRUIT OF NANO TECHNOLOGY – GRAPHENE FOAM CORE

STRONGER AND MORE STABLE STRUCTURE

By integrating the Sight bar, its movement against shooting shock is smaller and shooting is more stable with improved durability.

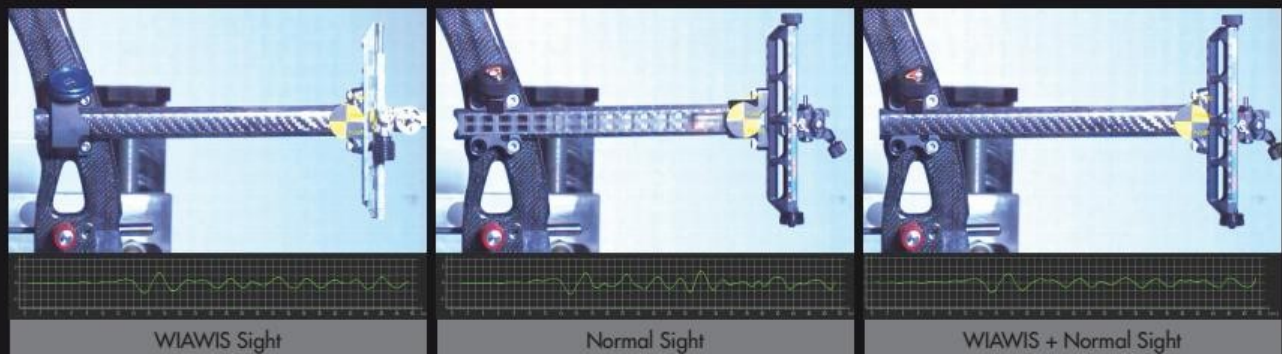


OUTSTANDING SHOCK ABSORPTION

Special foam to be used at the new Sight has low specific gravity and high stiffness. It features the Sight lighter, stiffer and more excellent to absorb shooting shock. In addition, high tensile Nano Carbon material outside also improves stiffness.

COMPATIBILITY OF THE SIGHT BAR

Performance of a sight bar to absorb shock and to be stiff has an effect on movement of a sight in shooting. WIAWIS sight bar moves more stably. Once you change the sight bar, you can feel how different the sight moves and shooting stable. WIAWIS sight is compatible with other brands'. Try it and feel the difference.



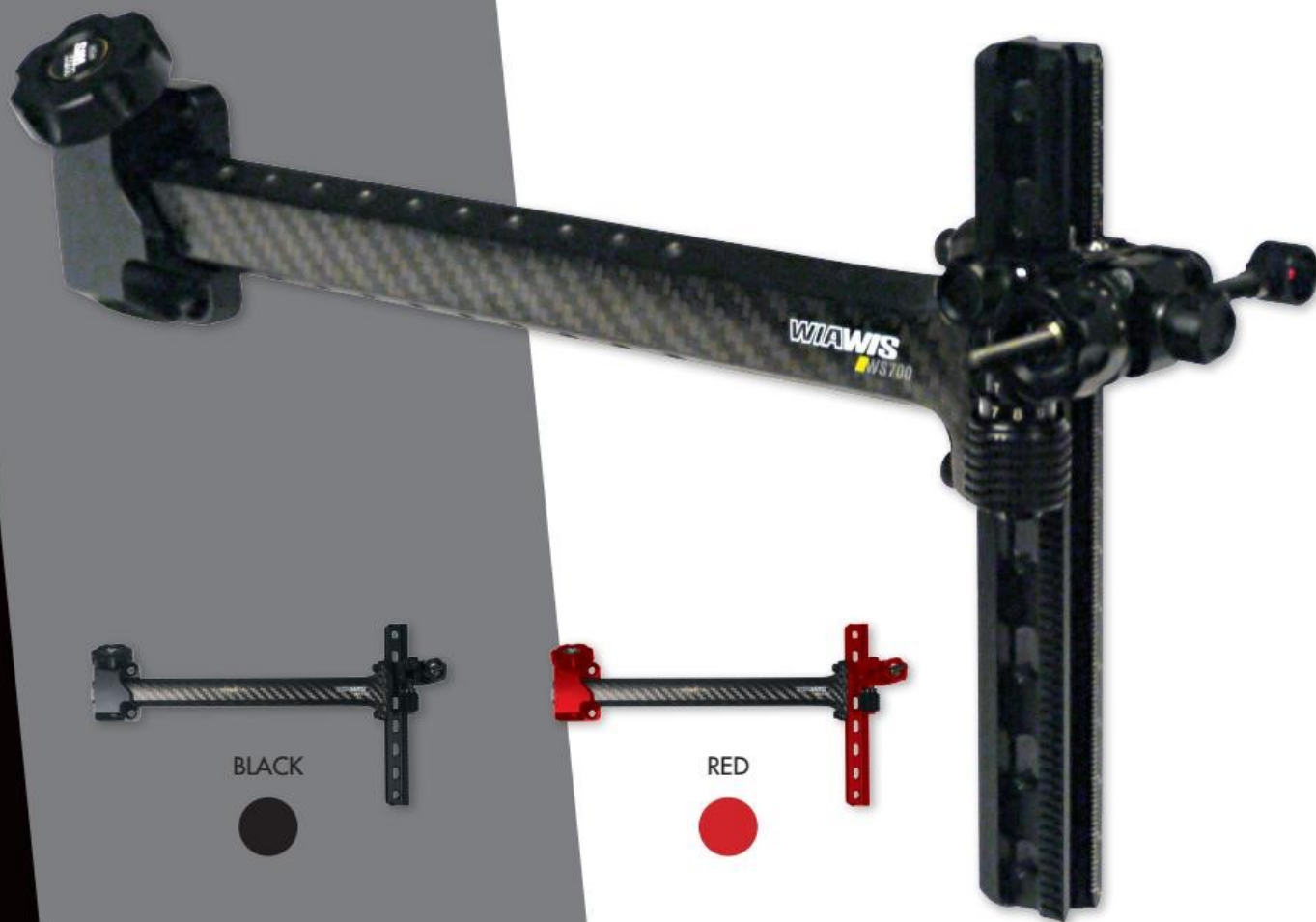
WS700 SIGHT

GRAPHENE FOAM CORE

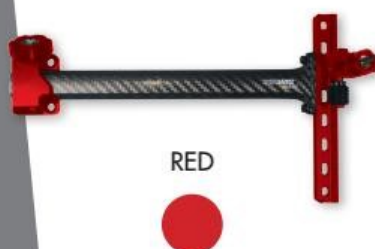
Special foam to be used at the new Sight has low specific gravity and high stiffness. It features the Sight lighter, stiffer and more excellent to absorb shooting shock. In addition, high tensile Nano Carbon material outside also improves stiffness.

TECHNICAL SPECIFICATIONS

- ▶ RH / LH
- ▶ WEIGHT : 207g



BLACK



RED



BLUE



SILVER



WS600 SIGHT

NEVER COMPROMISE YOUR AIM



WS600 is WIN&WIN's precision-machined competition sight, trusted by some of the world's best archers. It has wheel tuners to accurately measure fine sight movements and a slide bar for convenient and smooth vertical adjustment. A unique bolt system securely locks the sight in place. Foam inside its carbon extension bar protects the WS600 from damaging vibration that travels through a bow when it is shot. It also keeps weight to a minimum and prevents torque during shooting. Never compromise your aim. Choose the trustworthy, sturdy and secure WS600 sight from WIN&WIN.

TECHNICAL SPECIFICATIONS

- RH / LH
- WEIGHT : 585g



BLACK



RED



BLUE



SILVER



WIAWIS ACCESSORIES



WIAWIS MIGHTY CUSHION PLUNGER

Our new cushion plunger is designed to enhance the concentration in a optimized size, and the aluminum material offers luxurious finish and gentle button action.

- MATERIAL : Stainless
- WEIGHT : 43g
- THREAD SIZE : 5/16"-24
- COLORS : Silver



WK500 CUSHION PLUNGER

Well-engineered from high-quality components, the WK500 Cushion Plunger has a very smooth button action and micro click adjustments for fine bow tuning.

- ADJUSTABLE LENGTH
min 17.5mm - max 24.0mm (24mm pressure point)
min 24.0mm - max 29.0mm (29mm pressure point)
- WEIGHT : 29.5g
- THREAD SIZE : 5/16"-24
- COLORS : Black, Red, Blue, Silver



WIAWIS ACS CLICKER

The sleekly-shaped plate with a metal cap gives you a crystal-clear "click" sound, with easier and more precise adjustment than before.

- THREE THREAD SIZES : 6-32, 4-40 or M4
- COLORS : Black, Red, Blue, Silver, Gold



CARBON CLICKER

WIN&WIN's Carbon Clicker is light, precise and designed to fit snugly onto any riser. The matt black carbon blade gives a clear 'click' on every shot.

- THREE THREAD SIZES : 6-32, 4-40 or M4



BEARING ARROW REST

WIN&WIN's recurve arrow rest uses a flipper-style arm to improve accuracy and ensure smooth shooting. It incorporates a bearing that tightens groups on the target while providing superb clearance. The arm is stiff and stable, minimizing the vertical movement that interferes with clean arrow flight.

- RH / LH
- COLORS : Black, Silver



WIAWIS ACS UP STABILIZER

ACS UPSTABI dampers are outstanding at absorbing vibration and increasing dampening in a stabilization system.

- LENGTH : 110mm
- WEIGHT : 95g
- THREAD SIZE : 1/4" x 20(M)
- COLORS : Black



WIAWIS EZ FINGER TAB

The EZ finger tab is designed with an adjustable plate to perfectly fit your palm and allow for comfortable and natural hooking. The plate can be precisely adjusted to fit your hand by moving the plate in three planes : up and down, front and back, and diagonally. The small size of the tab takes away obstructions. The tab is made from reliable, high-quality genuine Cordovan leather.

- RH / LH
- SIZE : X-Small, Small, Medium, Large



WIAWIS EZ R FINGER TAB

The round design of the EZ R Tab and unique sliding adjustments allow for comfortable thumb positioning and natural hooking. The unique plate positioning brings dynamic control over the WIAWIS EZ R finger tab. It is possible to control factors such as hand shape, the force being transmitted through the hand, and sensation of the shot. The plate that supports the little finger can be micro-adjusted and is also detachable. The tab is made from reliable, high-quality genuine Cordovan leather.

- RH / LH
- SIZE : X-Small, Small, Medium, Large



360 CORDOVAN FINGER TAB

Designed with archers' comfort in mind, the new 360 Cordovan Finger Tab is a high-quality and dependable genuine leather recurve finger tab.

- RH / LH
- SIZE : Small, Medium, Large



WIAWIS AT-100 ARM GUARD

AT-100 Arm Guard has a skeleton-like structure with all the unnecessary parts cut out, making it extremely light and comfortable to wear. Its smooth outer surface creates less friction when impacted by the string.

- COLORS : Black, Red, blue, White, Orange, Green



FINNO CHEST GUARD

Ergonomically designed to sit securely and consistently on the shoulder and around the chest shot after shot, FINNO Chest Guard was designed by archers for archers!

- RH / LH
- SIZE : Small, Medium, Large
- COLORS : Black, Red, Blue, White, Orange, Green



WIAWIS A-1 QUIVER

The total weight is dropped significantly and a cushioned belt provides a comfortable fit. Magnets at the bottom of the quiver make arrow carrying easy and multiple pockets allow you to carry all kinds of accessories.

- RH / LH
- BELT SIZE : 23 to 49 inches
- COLORS : Black, Red, Blue, Green
- 3 tubes



FD INDICATOR (TW-BRACE)

FD Indicator is a tool which allows you to determine the Center Shot at extended draw and to check the torsion of limbs at full draw.

- SIZE : SET - 470mm (18.5") / FULL DRAWING - 740mm (29")
- COLORS : Black

► WEIGHT : 580g



*Caution: Do not draw over 29" (marked red dot) or the FD Indicator could collapse.



Make sure FD Indicator comes out perpendicularly from the bow, and then increase the length by rotating the center section.



The FD Indicator is marked with a series of dots at 1" increments. The first dot indicates a length of 24" from the string to the pivot point.

WEIGHT/TILLER ADJUSTMENT BOLT

- | | | | |
|---------------------|-----------------|-----------|-----|
| ► A Type | Aluminium | 13mmx1.25 | 34g |
| ► B (Tow-tone) Type | Stainless steel | 13mmx1.25 | 42g |
| ► C (Tow-tone) Type | Stainless steel | 12mmx1.25 | 39g |

WIAWIS NANO TFT, WIAWIS NANO MAX
WIAWIS ATF, INNO AXT, WINEX-II, INNO AL1, WINACT-VT
WIAWIS NANO TFT, WIAWIS NANO MAX
WIAWIS ATF, INNO AXT, WINEX-II, INNO AL1, WINACT-VT
INNO CXT, RCX-100, RAPIDO



A TYPE



B, C TYPE

LIMB BOLT

- WEIGHT : 2g (*original stainless steel limb bolt weighs 6grams)



WEIGHTS

- WEIGHT : Head 40g / Flat 23g



ABS BOWCASE

Protecting archery equipment is essential, and that is why the ABS Bowcase has such a solid outer shell. The smart design includes an extendable trolley handle, but does not sacrifice space for its impressive durability. Inside, there is plenty of room to store and organize a variety of archery gear.

- SIZE : INNER - 830×330×205 (mm) / OUTER - 878×348×219 (mm)
- COLORS : Black, Silver



TY MULTI BOW STAND

Suitable for indoor and outdoor use, the TY Multi Bow Stand is solidly built and a reliable bow support in all conditions. It is light yet strong and durable, its flip-lock legs fold up for easy storage and comes with two types of cradle head.

- COLORS : Black, Silver



SCAPOWER STRETCH BAND

Used as an exercise tool, the SCAPOWER Stretch Band will increase an archer's pulling weight, build up muscle and develop firmness in the shoulder. It can also be used to improve posture and technique.

Daily practice is recommended : 10 minutes at a time with at least a 2 or 3 minute break. It does not take long to see improvement in shot placement, draw process and balance in the bow shoulder. Try it for yourself!

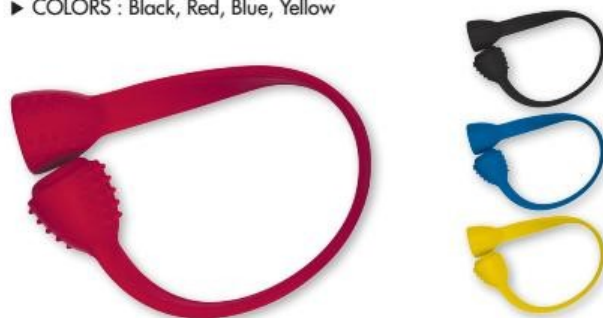


WIAWIS STRETCH BAND

Used as an exercise tool, WIAWIS Stretch Band will increase archer's strength & flexibility.

The archer's posture and technique will be improved with this.

- COLORS : Black, Red, Blue, Yellow



ARROW PULLER

The solid gripping surface on WIN&WIN's arrow puller makes retrieving arrows from the target safe and easy. It fits comfortably in the hand, includes a keyring for attachment to a belt or pack. Shaped like a cat!



GRIP MAKER

Some archers find a custom-fit grip improves their shooting. Make your own grip quickly and easily with a WIN&WIN grip maker resin kit. WIN&WIN Gripper resin is available in 300g and 25g quantities.



APPAREL COLLECTION



2016 OFFICIAL ARCHER SHIRT

COLOR Blue SIZE S, M, L, XL, XXL



2016 OFFICIAL ARCHER SHIRT

COLOR Yellow SIZE S, M, L, XL, XXL



2015 OFFICIAL ARCHER SHIRT

COLOR Red-Blue SIZE S, M, L, XL, XXL



2015 OFFICIAL ARCHER SHIRT

COLOR Blue SIZE S, M, L, XL, XXL



POLO SHIRT

COLOR Blue SIZE XS, S, M, L, XL, XXL, XXXL



GREAT WIN T-SHIRT

COLOR White SIZE XS, S, M, L, XL



BLUE FIRE T-SHIRT

COLOR White, Black SIZE S, M, L, XL



CAP 1
COLOR Beige, Navy



CAP 2
COLOR Blue



CAP 3
COLOR White



CAP 4
COLOR Blue, Black



CAP 5
COLOR White, Black



CAP 6
COLOR Gray



CAP 7
COLOR Camo



SOCKS
COLOR White
※ 3 pairs per pack (Men's or Women's)



BELT
COLOR Black



TOWEL
COLOR Blue



UMBRELLA



TELESCOPIC UMBRELLA

WIN&WIN ATHLETES

WE ARE BORN TO WIN. ARE YOU?



TAKAHARU FURUKAWA
JAPAN



TAYLOR WORTH
AUSTRALIA



JAYANTA TALUKDAR
INDIA



KAORI KAWANAKA
JAPAN



KHATUNA LORIG
USA



BERNARDO OLIVEIRA
BRAZIL



LARRY GODFREY
GREAT BRITAIN



CLAUDIA MANDIA
ITALY



MATIJA MIHALJIC
CROATIA



NAGAMINE SAORI
JAPAN



RYAN TYACK
AUSTRALIA



OHYAMA NAOYA
JAPAN



KUO CHENG-WEI
CHINESE TAIPEI



ANTTI TEKONIEMI
FINLAND



HAMILTON NGUYEN
CANADA



ANDREAS SKALBERG
SWEDEN



TANYA GIACCHERI
ITALY



JEFF HENCKELS
LUXEMBURG



MICHELLE GILBERT
USA



CONNER SORLEY
CANADA



SIMON NESEMANN
GERMANY



THOMAS STANWOOD
USA



LAURIE LECOINTRE
FRANCE



ERIC SKOERIES
GERMANY



JUUSO HUHTALA
FINLAND



ERIC LIBERT
FRANCE



FANG YU TING
CHINA



FELIX WIESER
GERMANY



GEORCY-STÉPHANIE THIFFEAULT PICARD
CANADA



IRIA GRANDAL GARCIA
SPAIN



CHOI MISUN
KOREA



KU BONCHAN
KOREA



CHANG HYEJIN
KOREA



MIGUEL ALVARINO GARCIA
SPAIN



WEI CHUN HENG
CHINESE TAIPEI



NAOMI FOLKARD
GREAT BRITAIN



KIKUCHI HIDEKI
JAPAN



LUCAS DANIEL
FRANCE



ALEXANDRA MIRCA
MOLDOVA



YUKI HAYASHI
JAPAN



ALICIA MARIN
SPAIN



DAN OLARU
MOLDOVA



XU JING
CHINA



LAURA RUGGIERI
FRANCE



ELENA TONETTA
ITALY



SARA VIOLI
ITALY



VIRGINIE CHÉNIER
CANADA



PIT KLEIN
LUXEMBURG



FLORIAN FABER
SWITZERLAND



CHRISTIAN WEISS
GERMANY



ANNEMARIE DER KINDEREN
NETHERLANDS



NATHAN YAMAGUCHI
USA



ASHE MORGAN
GREAT BRITAIN



THOMAS ANTOINE
FRANCE



ROMAIN GIROUILLE
FRANCE



BRAD DENNY
GREAT BRITAIN



MATT ZUMBO
USA



MIRENE ETXEBERRIA FERRER
SPAIN



SOLENN THOMAS
FRANCE



JUAN RODRIGUEZ
SPAIN



JESHER APPELS
NETHERLANDS



VANESSA LEE
CANADA



LAURE DELFAU
FRANCE



LI JIAMAN
CHINA



MATHIEU JIMENEZ
FRANCE



WIN&WIN KOREA

19, Donghanggongdan-gil, Yangseong-myeon, Anseong-si, Gyeonggi-do, 17502, KOREA
T +82 31 671 0894 F +82 31 671 0895 E win@win-archery.com

WIN&WIN EUROPE

90/5 Boulevard Saint Michel 91150 ETAMPES - FRANCE
T +33 164 929 745 E Infos@winwin-Europe.com

WIN&WIN CHINA

Beihai Export processing zone, Beihai Av. West
Beihai city, Guangxi, 536000, CHINA