

# INNOVATIONS OF WINBLACK

## 1. REPLACE STRING AND CABLES WITH A LOCKING PIN

Replacable for the string with a locking pin without a bow press.

It is also available for Installing peep, adjusting timing and tuning for cables.

### HOW TO REPLACE STRING AND CONTROL[TIME] CABLE.

- A**
- 1) Place the bow on a surface with cams facing upwards.
  - 2) With palm, press down string to cause the cams to rotate.
  - 3) With a locking pin, peg the cam in indicated holes.
  - 4) Relax the palm pressure and observe cams rotating back slowly until the pin interferes with OUTER limb surface.



- B**
- At this point, the string should be relaxed enough to swap out by hand. Your control cable can also be adjusted and replaced if necessary at the same moment the string is relaxed.



### HOW TO REPLACE BUSS[POWER] CABLE.

- A**
- 1) To change the Buss cable, place the bow on a surface with cams facing upwards.
  - 2) With palm, press down buss cable to cause the cams to rotate.
  - 3) With a locking pin, peg the cam in indicated holes.
  - 4) Relax the palm pressure and observe cams rotating back slowly until peg interferes with INNER limb surface.



- B**
- At this point, the cable should be relaxed enough to swap out by hand.



---

## 2. CABLE SLIDE & FLEXIBLE GUARD

It makes the cable movement more smooth during shooting and increases the energy efficiency of the bow (synergy effect for the arrow speed of 2 ~ 3 F / S).

Flexible guard (cable guard bar) flexes flexibly when drawing, it minimized for twist of handle and wing when pull draw.



---

## 3. TAKE DOWN & SET - UP WITHOUT A BOW PRESS

Our limb pocket system allows for complete takedown of the bow with only an allen wrench. Changing strings, tuning and installing accessories can now be done without a press.

(Caution: Must untighten bolts equally; alternating every 2 turns to relieve limb tension safely)



---

## 4. DUAL SHOCK DAMPER

In addition to absorbing the shock at the time of shooting, it absorbs the direct impact, providing excellent stability in shooting





# HUNTING LINE

## WINBLACK BOW COLLECTION





# WINBLACK BOW COLLECTION

## HUNTING LINE



HURRICANE C6



SHADOW PRO 34



SPARTAN 33



BLACK WOLF

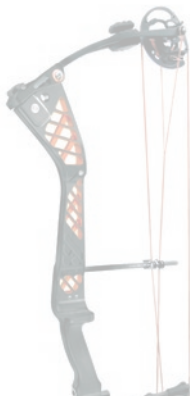


BLACK ELK

## TARGET LINE



GRIFFIN-X  
39 / 37



ATOM-X PRO  
39 / 37



ATOM-X  
39 / 37



SHADOW PRO 36

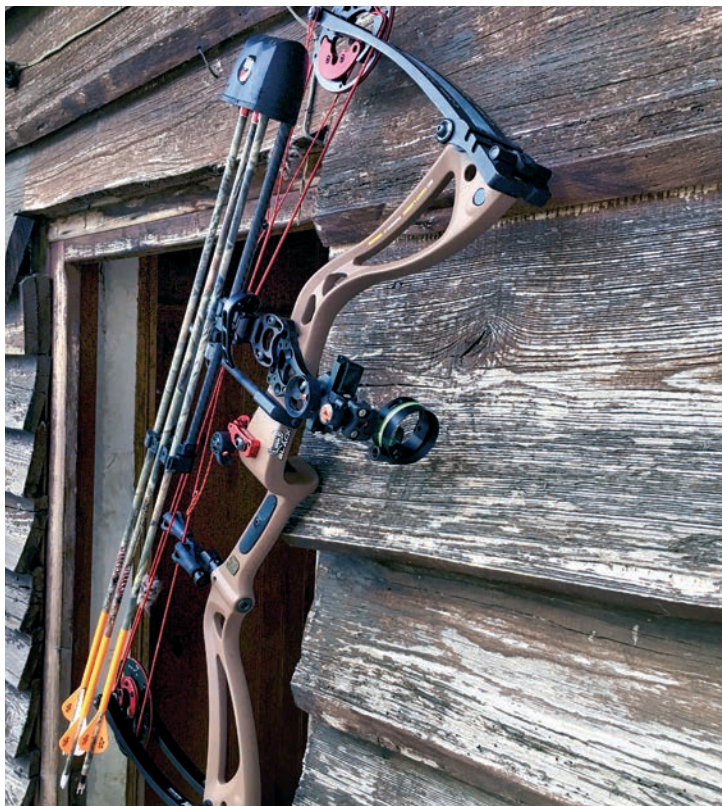


DRAGON-X 36



DRAGONFLY  
40 / 38

# HURRICANE<sup>C6</sup>



## THE BEST CARBON COMPOUND BOW EVER MADE

Made from pure carbon, Win&Win's HURRICANE C6 represent the pinnacle of nano carbon technology. The HURRICANE C6 is the perfect bow for hunting. Featuring an incredible arrow speed of 326 fps and a brace height of 6.5", you will make the experience of a light as well as a forgiving compound bow. It is stylishly designed and structured to prevent lateral twisting, making it stable and comfortable to shoot with. The HURRICANE C6 comes with a special system especially developed by Win&Win that will allow you a fine setup of your bow without even using a press.



HURRICANE C6 CAMO DESOLVE

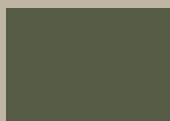




**SPEED,  
EFFICIENCY AND  
SMOOTHNESS  
WITHOUT  
COMPROMISE**



BRONZE



OD GREEN



REAL  
CARBON



CAMO  
NEXT

**AZ cam s  
AZ cam 2**

**AZ cam 1  
AZ cam 3**

IBO Speed: **330 fps** with AZ1 cam

Mass Weight: **3,86 lbs / 1,75 kg**

Brace Height: **6 1/2"**

Weight Range: **40-50# to 60-70#**



Axle to  
Axle:

**31"**

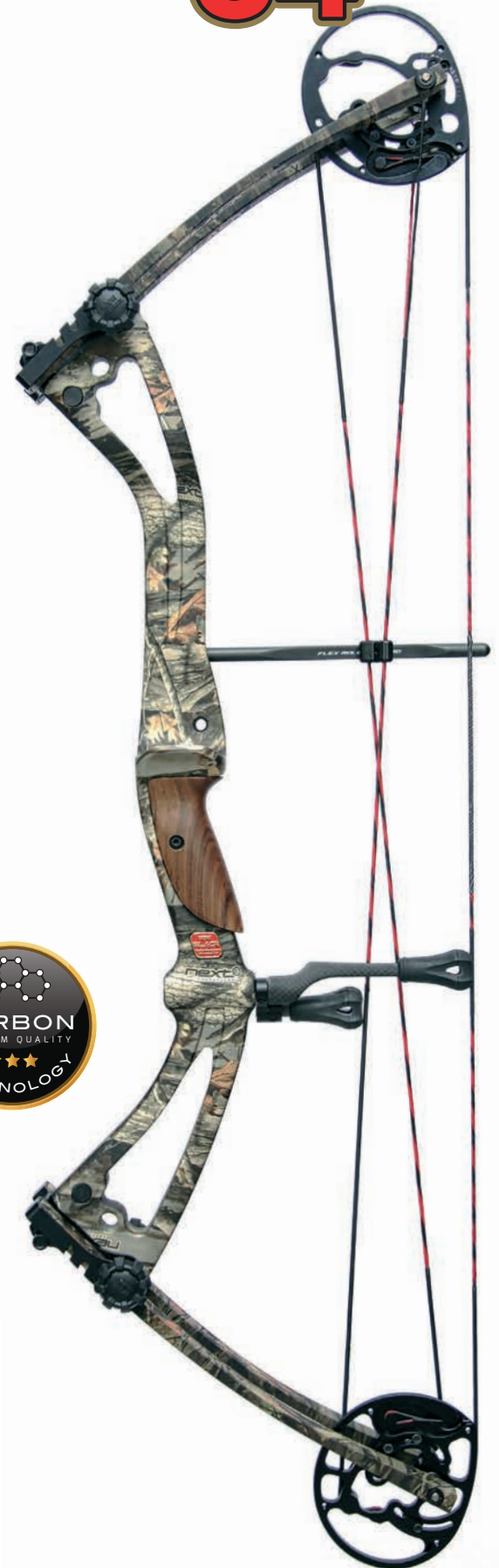


# SHADOW PRO 34



## ULTRA LIGHT CARBON BOW

Win&Win's SHADOW PRO series gets all the benefits from our world famous recurve technology. Made to maximize the properties of carbon, SHADOW's riser minimizes unnecessary limb movement when an arrow is released. This makes shooting far more stable and efficient by lessening the wasted energy lost as vibration. The SHADOW PRO also features the upgraded EZ2 cam which helps you in setting your draw length perfectly.



SHADOW PRO 34 CAMO

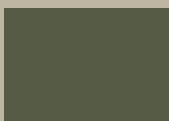




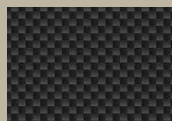
**LESS VIBRATION,  
MORE ENERGY,  
MORE ACCURACY**



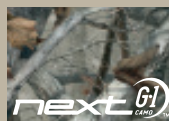
**BRONZE**



**OD GREEN**



**REAL  
CARBON**



**CAMO  
NEXT**

***AZ cam 1  
AZ cam 2***

***AZ cam 1  
AZ cam 3***

IBO Speed: **324 fps** with AZ1 cam  
Mass Weight: **3,66 lbs / 1,66 kg**  
Brace Height: **6<sup>7</sup>/<sub>8</sub>"**  
Weight Range: **40-50# to 60-70#**



Axle to  
Axle:

**34"**

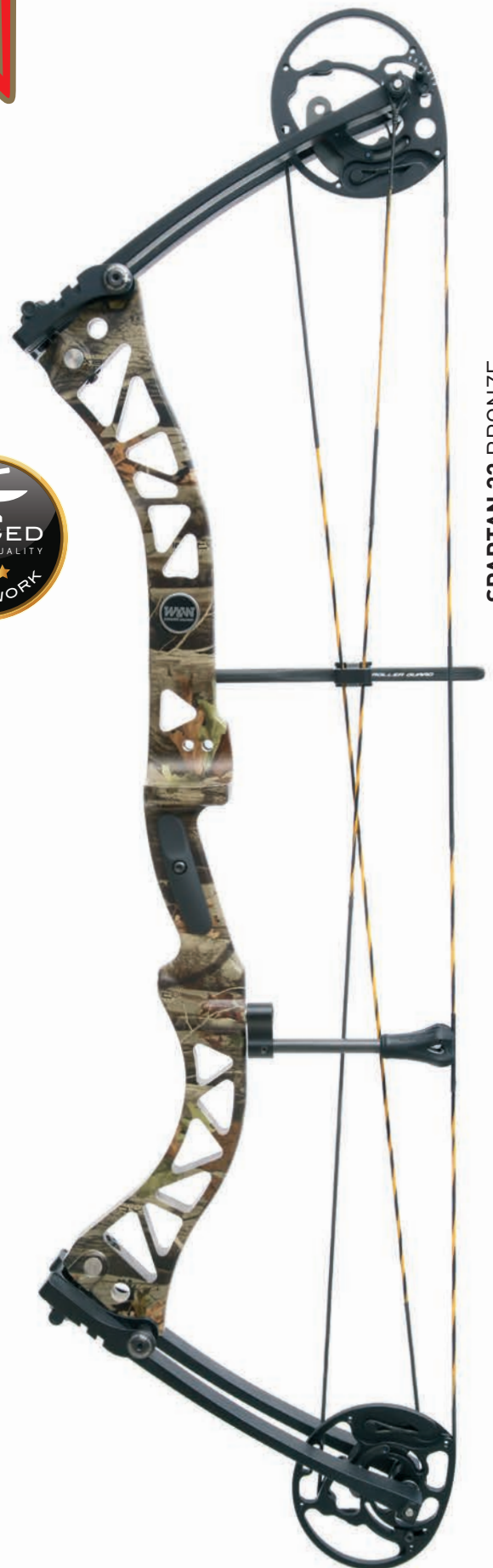


# SPARTAN



## QUIET, SMOOTH AND SHOCK FREE

Win&Win's SPARTAN compound bow has all the benefits of an aluminium construction, the clean-cut shape prevents the vibration throughout the riser. Thanks to its new EZ2 cam system, for delivery impressive arrow speeds and very good feeling during the draw.

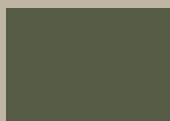


SPARTAN 33 BRONZE





BRONZE



OD GREEN



ANODIZED  
MATT BLACK



CAMO  
NEXT

*AZ cam s*  
*AZ cam 2*

*AZ cam 1*  
*AZ cam 3*

IBO Speed: **340 fps** with AZ1 cam  
Mass Weight: **3,75 lbs / 1,7 kg**  
Brace Height: **6<sup>7</sup>/<sub>8</sub>"**  
Weight Range: **40-50# / 60-70#**



Axle to  
Axle:

**33"**

SPECIAL WEAPONS

# SWAT



## THE BEST BOW TO START BOW SHOOTING

Solid as a rock! Win&Win's SWAT compound bow has all the benefits of an aluminium construction at an affordable price, the clean-cut shape of the economical SWAT is also contrasted by its stylish metal brackets.



ANODIZED  
MATT BLACK



CAMO  
NEXT



IBO Speed: **335 fps** with S1 cam  
Mass Weight: **3,6 lbs / 1,6 kg**  
Brace Height: **7,25"**  
Weight Range: **30-50#**

Draw Lengths: **19 1/2" to 31"** with S1 cam



Axle to  
Axle:  
**33"**







# Black Wolf

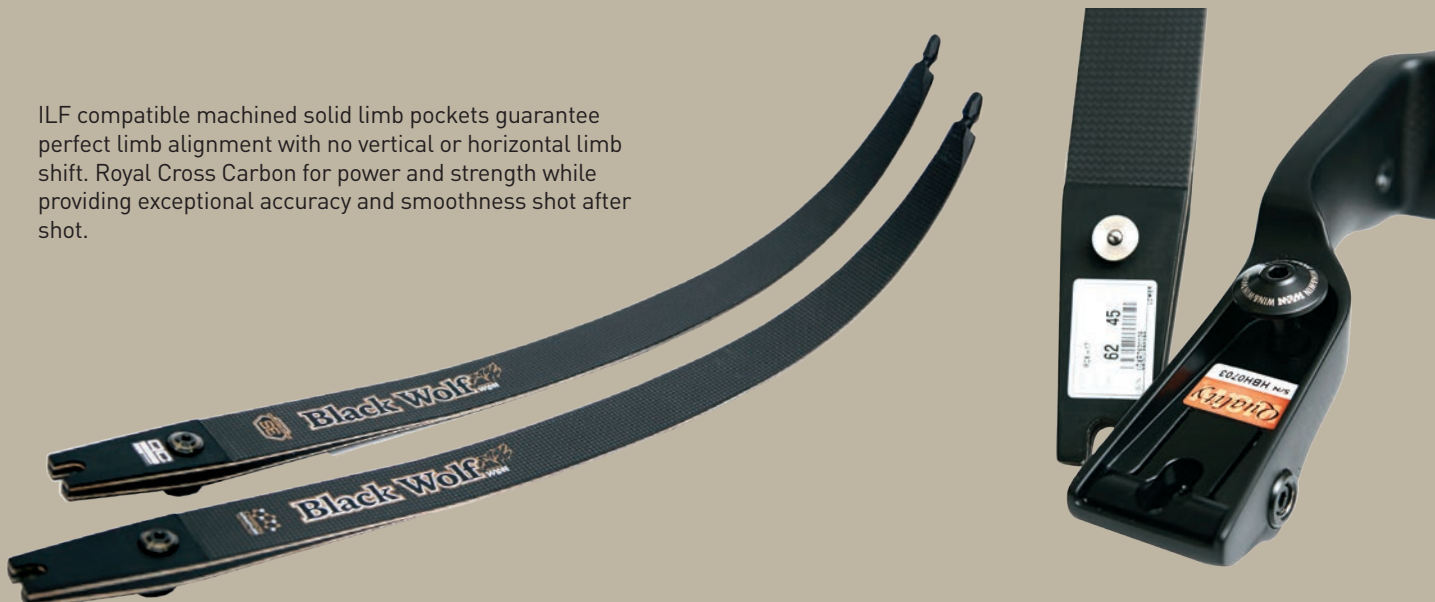


## LEADING THE WAY IN RECURVE TECHNOLOGY

Win&Win Archery manufacture recurve bows for a world of champions, where every archer in every nation strives for perfection since 1980. BLACK WOLF series makes no exception and gathers both Win&Win's heritage and experience in building recurve bows for hunting, without sacrificing maneuverability. Black Wolf recurve was the ultimate traditional recurve bow with 17" carbon riser paired with all Win&Win limbs.



ILF compatible machined solid limb pockets guarantee perfect limb alignment with no vertical or horizontal limb shift. Royal Cross Carbon for power and strength while providing exceptional accuracy and smoothness shot after shot.



**SPEED, EFFICIENCY  
AND SMOOTHNESS  
WITHOUT  
COMPROMISE**



Mass Weight: **2,5 lbs / 1,7 kg**  
Riser Length: **17"**

Bow Length: **58-60-62"**  
Available Weight: **35 to 65 lbs**





# Black Elk



## ILF TAKE-DOWN RECURVE BOW

The BLACK ELK will give you all the benefits of an aluminium manufactured, comfortable and durable 21" riser. A very high quality wood grip prevents slipping from your hands. The BLACK ELK built with the Win&Win ILF (International Limb Fitting) design for optimum accuracy. The poundage can be set within a range of +/- 5% from the limbs used. The BLACK ELK recurve is the perfect solution for recurve shooters who want a high-performance bow at an entry level price.



\*For bowhunting or 3D competition in some classes, a plastic rest pads was included for center-shot tuning



BLACK ELK CAMO

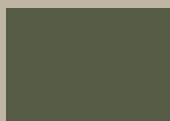




**STABILITY,  
ERGONOMICS AND  
PERFORMANCE  
FOR THE FUTURE  
AT AN ENTRY  
LEVEL PRICE**



BRONZE



OD GREEN



ANODIZED  
MATT BLACK



CAMO  
NEXT

Mass Weight: **2,2 lbs / 1 kg**  
Riser Length: **21"**

Bow Length: **62"**  
Available Weight: **35 to 65 lbs**





# TARGET LINE

## WINBLACK BOW COLLECTION





---

# WINBLACK BOW COLLECTION

---

## HUNTING LINE



HURRICANE C6



SHADOW PRO 34



SPARTAN 33



BLACK WOLF



BLACK ELK

## ■ TARGET LINE



GRIFFIN-X  
39 / 37



ATOM-X PRO  
39 / 37



ATOM-X  
39 / 37



SHADOW PRO 36



DRAGON-X 36



DRAGONFLY  
40 / 38

# GRIFFIN-X



## NEW CARBON BRIDGE WAS BORN

Griffin-X compound bow reinforced a part of the sight window by using graphene 'EX Supporter'. It decreases shooting shock and vibration transferred to a handle at the moment of shooting by approximately 20% compared to ordinary compound bows and increases accuracy and stability.

In addition, bidirectional 45 degrees holes on a surface prevents from twisting and provides more shooting stability by reducing bow torque and improving the overall balance of the riser during shooting.



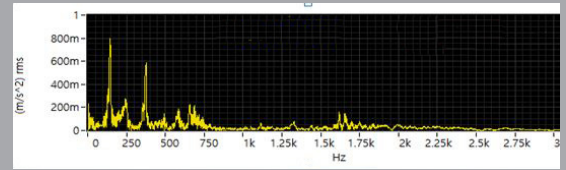
GRIFFIN-X 39 BLACK



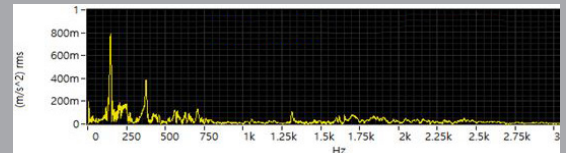


## ANALYSIS OF VIBRATION DURING SHOOTING

You can see that overall vibration was reduced outstandingly.

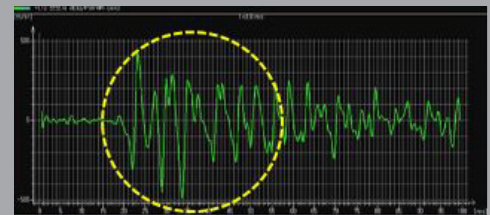


without graphene 'EX Supporter'

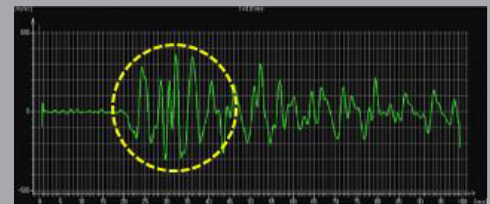


with graphene 'EX Supporter'

## COMPARISON OF BOW TORQUE WITH/WITHOUT EX SUPPORTER



without graphene 'EX Supporter'



with graphene 'EX Supporter'



IBO Speed: **321 fps** with AZ1 cam  
 Mass Weight: **4,85 lbs / 2,2 kg**  
 Brace Height: **8<sup>5/16</sup>"**  
 Weight Range: **30-40# to 50-60#**

IBO Speed: **323 fps** with AZ1 cam  
 Mass Weight: **4,96 lbs / 2,25 kg**  
 Brace Height: **7<sup>3/4</sup>"**  
 Weight Range: **30-40# to 50-60#**



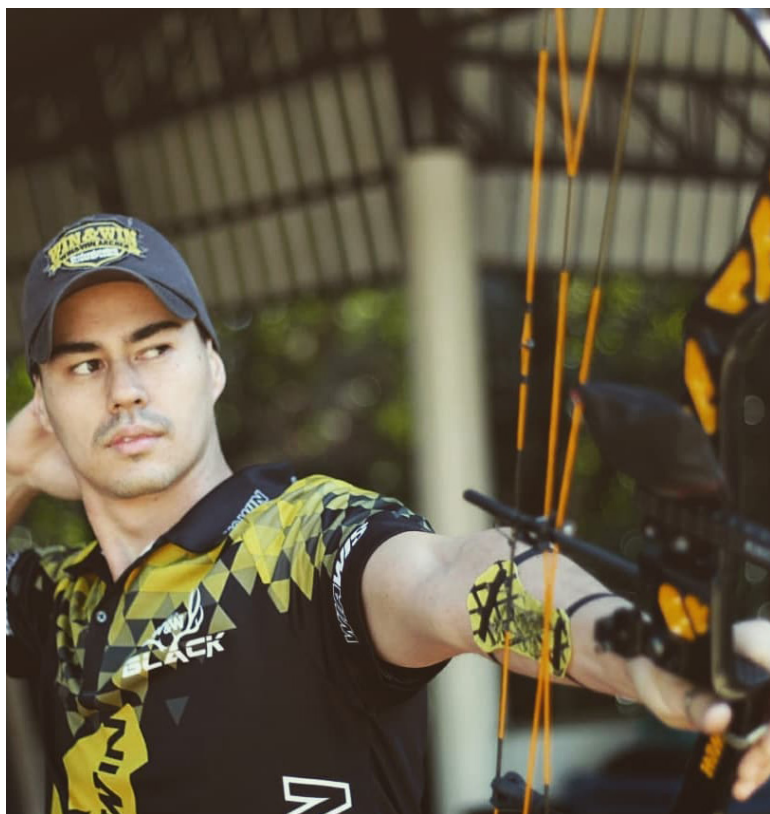
Axle to Axle:

**37"**



Axle to Axle:

**39"**



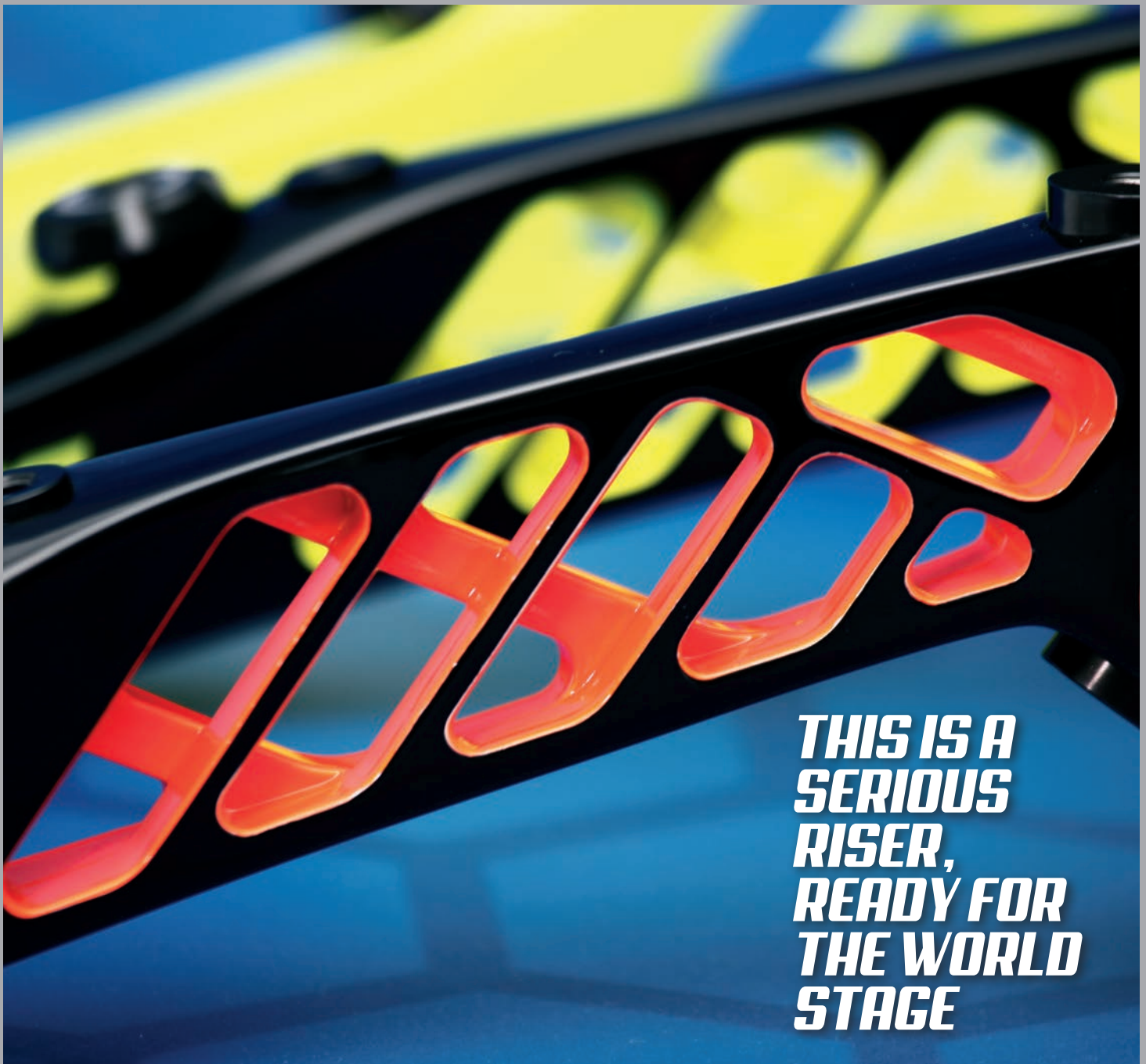
## BIDIRECTIONNAL 45° FRAME STRUCTURE

The new ATOM-X PRO is better torque-free than other. Perfectly balanced for ultimate accuracy and consistency. This 45° frame structure prevents twisting and makes it stable to shoot with. The new ATOM-X PRO feels solid in the hand and the hard, strong metal it is made from inspires confidence. It comes equipped with the pocket, new roller cable and limbs damper.



ATOM-X PRO 39 BLACK / BLAZE ORANGE





**THIS IS A  
SERIOUS  
RISER,  
READY FOR  
THE WORLD  
STAGE**



**BLACK /  
BLAZE ORANGE**



**BLACK /  
NEON YELLOW**



**BLACK /  
RED**



**WHITE /  
BLUE**

IBO Speed: **321 fps** with EZ1 cam  
Mass Weight: **5,29 lbs / 2,4 kg**  
Brace Height: **8<sup>5/16</sup>"**  
Weight Range: **30-40# to 50-60#**



Axle to Axle:

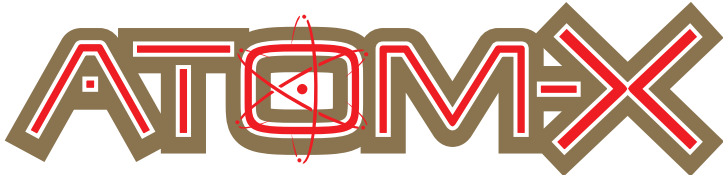
**37"**

IBO Speed: **323 fps** with EZ1 cam  
Mass Weight: **5,4bs / 2,45 kg**  
Brace Height: **7<sup>3/4</sup>"**  
Weight Range: **30-40# to 50-60#**



Axle to Axle:

**39"**



## MANUFACTURED FROM THE MOST ACCURATE INDUSTRIAL PROCESS

110% stronger than any other bow, the ATOM-X is torque-free. During development each design must survive a 100,000-repetition durability test. Hot forging system enhances the useful properties of all Win&Win aluminum products, like tensile strength and hardness.

The ATOM-X was perfectly balanced for ultimate accuracy and consistency.



ATOM-X 39 ANODIZED SHINY BLUE





**EVERY INNOVATIVE  
TECHNOLOGY WE  
USE IS PART OF  
THE SCIENCE OF  
SHOOTING FEELING**



ANODIZED  
MATT RED

ANODIZED  
MATT BLUE

ANODIZED  
MATT BLACK

ANODIZED  
SHINY RED

ANODIZED  
SHINY BLUE

ANODIZED  
SHINY BLACK

REAL  
WHITE

TUNGSTEN  
GRAY

IBO Speed: **321 fps** with A21 cam  
Mass Weight: **4,63 lbs / 2,1 kg**  
Brace Height: **8<sup>5/16</sup>"**  
Weight Range: **30-40# to 50-60#**



Axle to Axle:

**37"**

IBO Speed: **323 fps** with A21 cam  
Mass Weight: **4,85 lbs / 2,2 kg**  
Brace Height: **7<sup>3/4</sup>"**  
Weight Range: **30-40# to 50-60#**



Axle to Axle:

**39"**

# SHADOW PRO 36



## THE BEST CARBON BOW FOR COMPETITION

Win&Win's SHADOW PRO series gets all the benefits from our world famous recurve technology. Made to maximize the properties of carbon, SHADOW's riser minimizes unnecessary limb movement when an arrow is released. This makes shooting far more stable and efficient by lessening the wasted energy lost as vibration. The Shadow Pro also features the upgraded EZ2 Cam which helps you in setting your draw length perfectly.



SHADOW PRO 36 TUNGSTEN GRAY





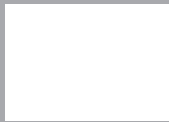
**THE POWER  
OF LIGHTNESS**



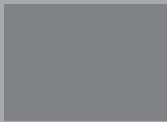
REAL  
CARBON



FIRE  
RED



ICE  
WHITE



TUNGSTEN  
GRAY

IBO Speed: **329 fps** with AZ1 cam

Mass Weight: **3,92 lbs / 1,78 kg**

Brace Height: **7<sup>1</sup>/<sub>4</sub>"**

Weight Range: **30-40# to 50-60#**



Axle to Axle:

**36"**

# DRAGON X



## 36 INCHES OF PURE POWER

The DRAGON X aluminium forged riser has all the perks of a light yet accurate bow for a great shooting experience! Perfect for short draw-length archers, the DRAGON X is also available at friendly price. The new EZ cam delivers power, precision as well as an easy setup.



DRAGON-X 36 ANODIZED MATT RED



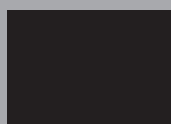
# DESIGNED FOR WOMEN AND YOUNG ARCHERS



ANODIZED  
MATT RED



ANODIZED  
MATT BLUE



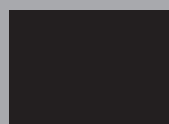
ANODIZED  
MATT BLACK



ANODIZED  
SHINY RED



ANODIZED  
SHINY BLUE



ANODIZED  
SHINY BLACK



REAL  
WHITE



TUNGSTEN  
GRAY

IBO Speed: **320 fps** with AZ1 cam

Mass Weight: **4,14 lbs / 1,88 kg**

Brace Height: **7<sup>1</sup>/<sub>2</sub>"**

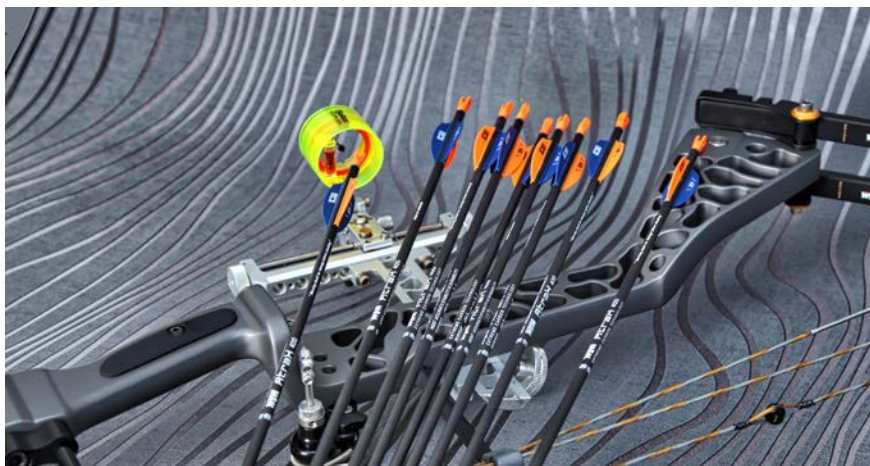
Weight Range: **30-40# to 50-60#**



Axle to Axle:

**36"**

# DRAGONFLY



## COMFORTABLE AND EASY TO SHOOT WITH

DRAGONFLY 38 and 40 inches was built with the following idea: being equally comfortable and easy to shoot with. The DRAGONFLY wins its fans as soon as they feel their hand nestle into its well-shaped grip. Made from strong forged aluminum, for a better straightness and durability.



Axle to Axle:

**38"**

IBO Speed: **322 fps** with AZ1 cam  
 Mass Weight: **4,19 lbs / 1,9 kg**  
 Brace Height: **8"**  
 Weight Range: **30-40# to 50-60#**

Axle to Axle:

**40"**



IBO Speed: **323 fps** with AZ1 cam  
 Mass Weight: **4,41 lbs / 2,0 kg**  
 Brace Height: **7 1/2"**  
 Weight Range: **30-40# to 50-60#**



DRAGONFLY 40 / BLACK



# THE BEST TECHNOLOGY FOR THE MOST COMPETITIVE ARCHERS AND BOWHUNTERS



## CARBON TECHNOLOGY

Carbon "nano-materials", "nanotube", "graphite" and "nanofiber" are true 21st century materials. They can be made as small as 1/10,000th of a human hair, and have superior mechanical, chemical, physical and magnetic properties. High-tech engineering creates the best carbon material mixture for Win&Win bows, improving product quality and gaining archers' confidence. Scientists believe nano-materials are the building blocks for the next generation of engineering.



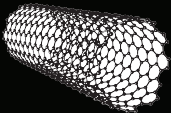
## CARBON STABILITY

Our carbon risers improve dampening, absorb shock and help control torque during shooting. Win&Win Black bows combine the best quality modern carbon materials with high-tech tooling and efficient molding methods. Our engineers had in mind to deliver the best equipment with the minimal weight in your hand.



## CARBON RISER

All risers are designed to stay straight and stable, minimising torque through the bow during shooting. Its multi-axial carbon pattern prevents riser and limbs from twisting and reduces unnecessary movement as an arrow is shot. This special carbon pattern also helps absorb vibration and shock quickly.



## BLP-Composite

BLP-Composite is additional nano technology. This adjustment made at the molecular level, significantly strengthens and enhances the stability of the overall carbon matrix.



## HIGH PERFORMANCE FORGED ALUMINIUM RISER

The precision forging machines are manufactured using modern technology adhering to the international standards. We can also provide these automotive forging machines in customized variations for our customers at competitive prices. Forged aluminum and machined with a CNC, it significantly increases stability and accuracy in shooting. The forged riser has improved tensile strength by 30% over normal solid aluminum risers.



## T6 HEAT TREATMENT

T6 heat treatment raises the tensile strength and elastic modulus of Win&Win aluminum risers, making them resilient to intense shock.



## EXTREME DURABILITY

Win&Win bows are made to a superior standard. During development each design must survive a 100,000-repetition durability test.



## DUAL RF SHOCK STOPPER

Win&Win new Dual RF Shock Stopper is made from an absorbent rubber material called Sorbaflex that nearly eliminates vibration and controls poor string movement as the arrow is shot. This is the most efficient small anti-vibration device for your compound bow!



**DESIGN, DEVELOPMENT  
AND PRODUCTION. ALL  
OF THESE PROCESSES  
ARE CONTROLLED BY  
WIN&WIN**

All products of WIAWIS are developed by the world's no. 1 archery company WIN&WIN which is located in South Korea. WIN&WIN's technicians go through the process of development and test in Korean headquarters. High-end products applying nano carbon technology are manufactured in Korea.

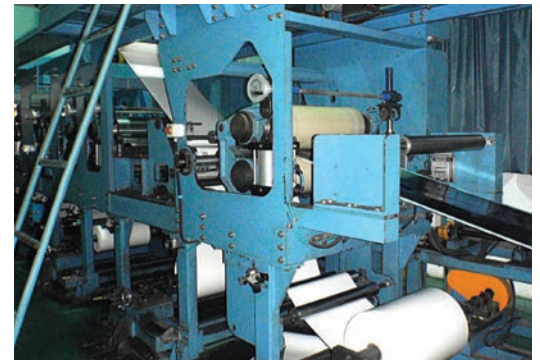


# NANO CARBON TECHNOLOGY : QUALITY DIFFERENTIATION



## THE DIFFERENCE OF NANO CARBON AND MATERIAL

WIAWIS uses the finest carbon fibers to produce high quality carbon preregs. WIAWIS makes nano carbon bows using preregs made by WIN&WIN. The quality of WIAWIS's nano carbon preregs are already proven by world class archers at the Olympic games..



WIAWIS did not hesitate to invest in advanced technology. We have accumulated a wide range of technology and know-how to make good products ranging from forging and heat treatment to aluminum technology, carbon prepreg manufacturing, and nano technology.



## WIN&WIN CO., LTD

KOREA HEAD OFFICE  
19 Donghanggongdan-gil, Yangseong-myeon, Anseong-si  
Gyeonggi-do, 17502 - KOREA

[www.wiawis.com](http://www.wiawis.com) | [www.winandwinblack.com](http://www.winandwinblack.com)

